

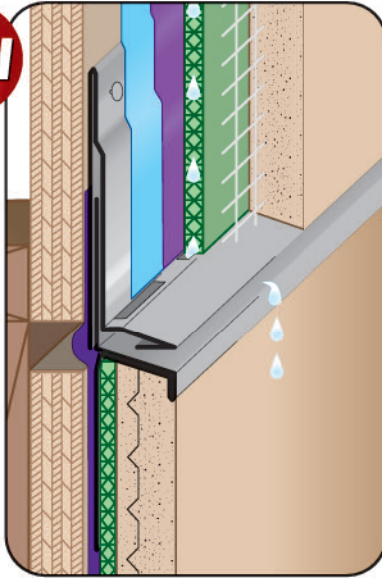


NEW

TWMSX: Tru-Weep™ M-Slide Expansion Joint®

- Included 3/16 x 2" Weep Slots
- Available in Aluminum, Copper, Galvanized Steel, Bonderized, Stainless Steel or Zinc
- US Patent 7,673,421 B2

The Tru-Weep™ M-Slide Expansion Joint® accessory is specifically designed to be used with drainage mat. Weep slots are located along the back of the sloped leg in alignment with the drainage mat to allow water to efficiently exit the stucco assembly.

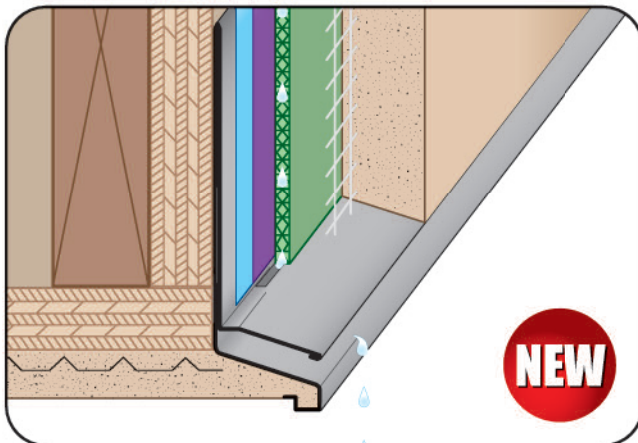
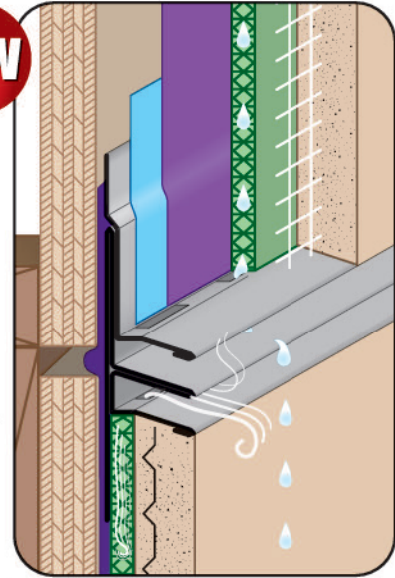


NEW

TWMW: Tru-Weep™ Midwall Vent

- Included 3/16 x 2" Weep Slots
- Available in Aluminum, Copper, Galvanized Steel, Bonderized, Stainless Steel or Zinc
- Patent Pending

The Tru-Weep™ Midwall Vent is a two piece horizontal control joint specifically designed to be used with drainage mat. This unique design allows for the top of the wall to drain moisture, and the bottom of the wall to vent air at the same midwall reveal. Weep slots are located along the back of the sloped legs in alignment with the drainage mats to allow water and air to efficiently exit the stucco assembly.

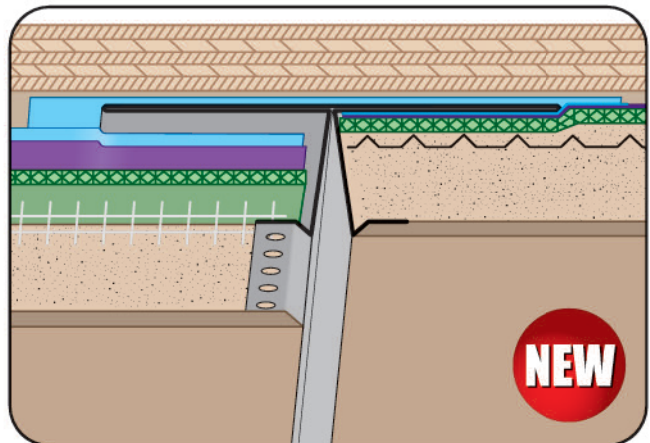


NEW

TWSD: Tru-Weep Soffit Drip

- Included 3/16 x 2" Weep Slots
- Available in Aluminum, Copper, Galvanized Steel, Bonderized, Stainless Steel or Zinc

The Tru-Weep™ Soffit Drip is a customizable soffit drip edge specifically designed to be used with drain mat stucco assemblies. Weep slots are located along the back of the sloped leg in alignment with the drainage mat to allow water to efficiently exit the stucco assembly.



NEW

TWVJ: Tru-Weep™ Vertical Control Joint

- Available in Aluminum, Copper, Galvanized Steel, Bonderized, Stainless Steel or Zinc

The Tru-Weep™ Vertical Control Joint is a customizable vertical control joint specifically designed to be used with drainage mat stucco assemblies. Tru-Weep™ Vertical Control Joint is to be used with drainage mat stucco assemblies per 2021 IBC: 2510.6.1