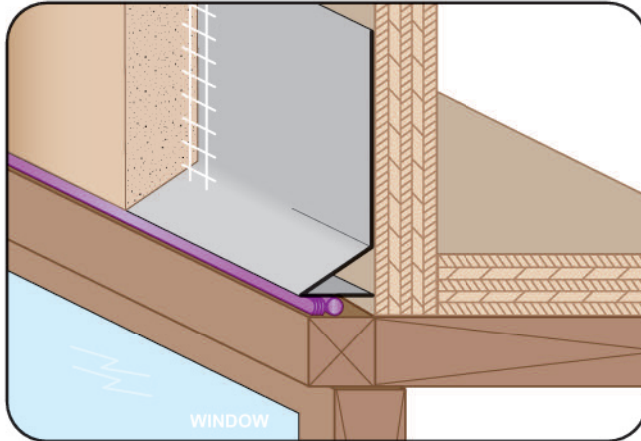




CUSTOM SIZES AVAILABLE!

Stockton Custom Fabrication
877-786-2587
custom@StocktonProducts.com



SRWS: #6 Solid Return Weep Screenshot

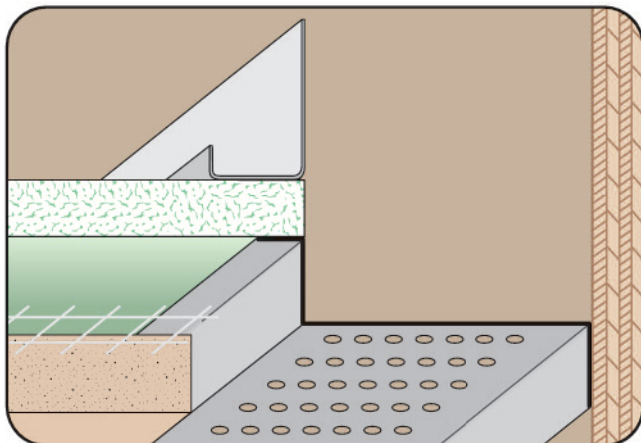
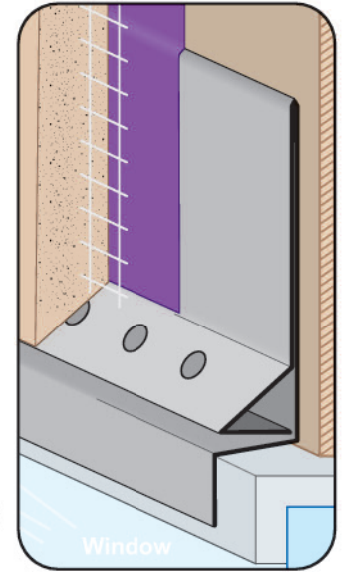
- Superior™ Moisture Protection
- Available Curved Upon Request
- Available in Aluminum, Copper, Galvanized Steel, Bonderized, Galvalume®, Stainless Steel or Zinc

The #6 Solid Return Weep Screenshot in an angles drip screed that can be used at base of walls. It may also be used as a window or door head plaster stop and flashing piece.

SSF: #3 Stucco Screenshot Flashing

- Superior™ Moisture Protection
- Available With 1/4" Weep Holes or No Holes
- Available Curved Upon Request
- Available in Aluminum, Copper, Galvanized Steel, Bonderized, Galvalume®, Stainless Steel or Zinc

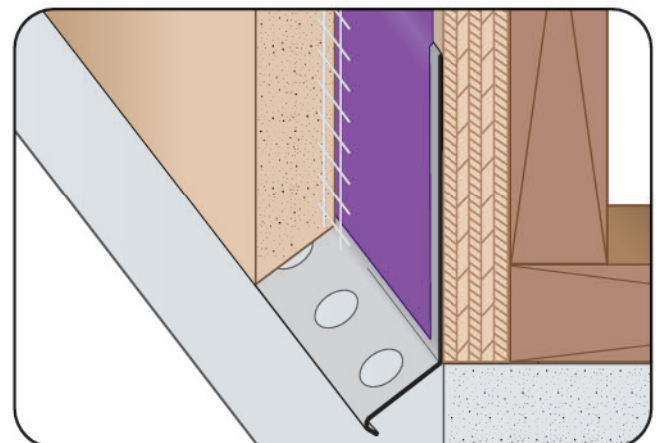
SSF combines a stucco screenshot and head flashing into one uniformed piece. Weep screenshot allows moisture to escape and travel over top of flashing. SSF provides ideal water management at window head, floor line and transition to dissimilar materials. Available with and without weep holes.



SSM: Step Separation Mold

- Available With 1/8", 1/4" Vent Holes or No Holes
- Available in Aluminum, Copper, Galvanized Steel, Bonderized, Galvalume®, Stainless Steel or Zinc

A versatile molding used primarily to separate either plaster or drywall from other materials.



SST: #36 Weep Screenshot

- Superior™ Moisture Protection
- Available With 1/2" Weep Holes or No Weep Holes
- Available Curved Upon Request
- Available in Aluminum, Copper, Galvanized Steel, Bonderized, Galvalume®, Stainless Steel or Zinc

A variation of the traditional weep screenshot that provides a plaster stop and weep function at the foundation line.