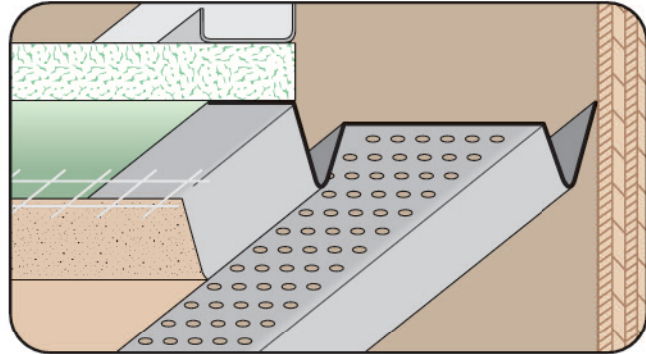


SFC88: Short Flange Casing Bead 88

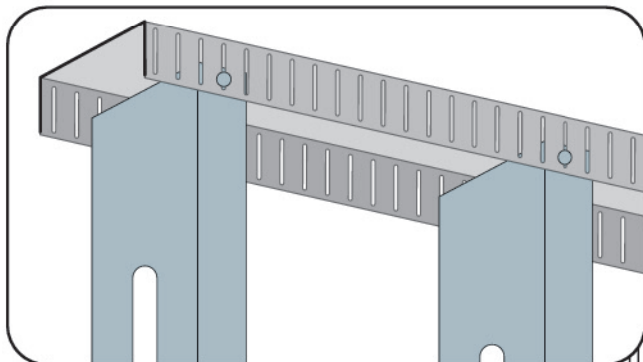
- Available in Galvanized Steel, Galvalume® or Aluminum
- Patent Pending

The latest addition to our new "Finish Rite™" line of plaster trims, the SFC88 Short Flange casing bead solves the problem of controlling the brown coat thickness in a 3 and 4 coat system to exactly the 3/4" depth required by providing a special screed leg at this depth. 1/8" key holes provide good keying of the brown coat to the trim piece to help prevent separation cracking and delamination. The SFC88 Short Flange saves time, material costs and increases production rates not to mention a crack-free finish. No more excessive plaster build up! Control your finish, control your cost! Special sizes available. Please contact us for more information.



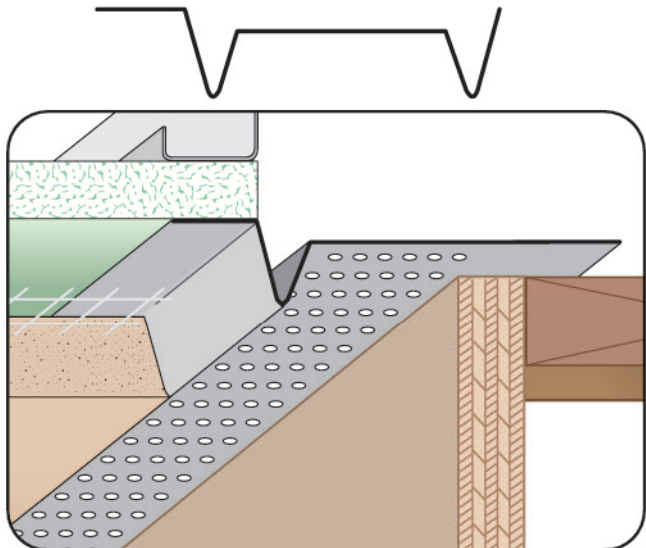
SFS: Single Flange Screed

- Available With 1/8", 1/4" Vent Holes or No Vent
 - Available Curved Upon Request
 - Available in Aluminum, Copper, Galvanized Steel, Bonderized, Galvalume®, Stainless Steel or Zinc
- Same as our standard vent, less one flange, designed to butt against walls on one side while providing a plaster stop on the other. Can be used in ceiling/wall or base conditions providing perimeter airflow. Available non-vented for use as a decorative reveal upon request.



SLT: Slotted Slip Track

- Available in Galvanized Steel
- Our Slip Slotted Track is a deflection track with slots in the legs to allow for vertical deflection. Giving you head of wall vertical deflection.



SPS: Single Point Screed

- Available With 1/8", 1/4" Vent Holes or No Vent
 - Available Curved Upon Request
 - Available in Aluminum, Copper, Galvanized Steel, Bonderized, Galvalume®, Stainless Steel or Zinc
- Single pointed vent used a at soffit/wall condition where uneven surfaces (such as split-faced block) exist providing perimeter airflow into the soffit. Available non-vented for use as a decorative reveal upon request.