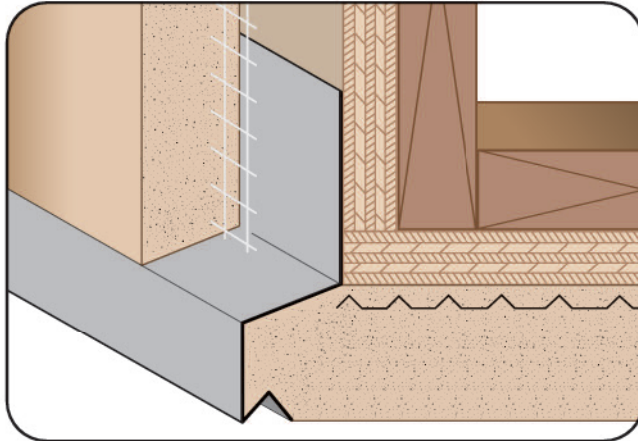




**CUSTOM SIZES AVAILABLE!**

Stockton Custom Fabrication  
877-786-2587  
custom@StocktonProducts.com

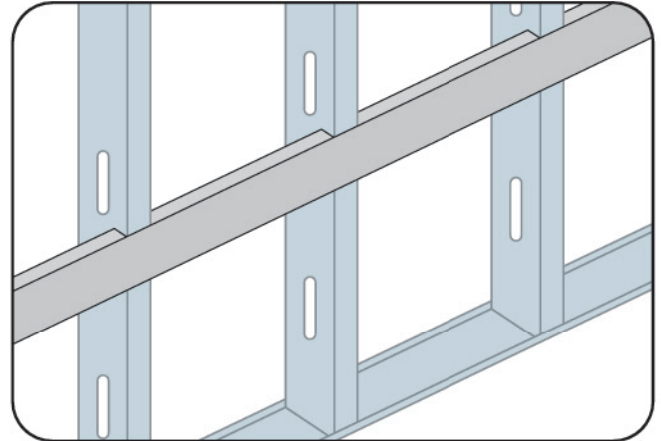


### NTD: #2 Drip

- No Weep Holes
- Available Curved Upon Request
- Available in Aluminum, Copper, Galvanized Steel, Bonderized, Galvalume®, Stainless Steel or Zinc

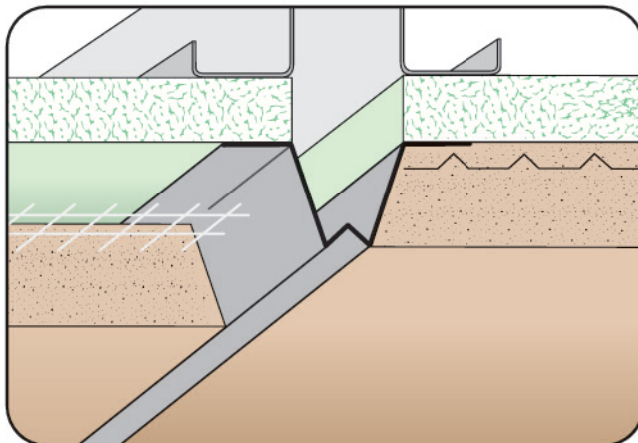
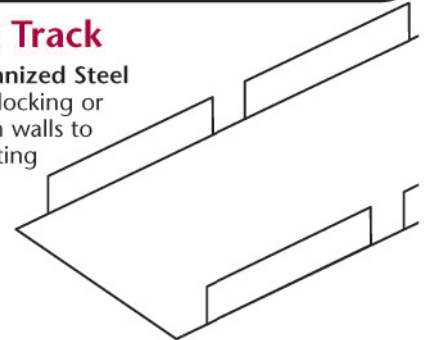
A plaster drip screed that helps align the soffit to give it a clean, straight edge at the fascia/soffit line. Provides a unique 3/4" "flush" reveal at the fascia.

**Note:** Curving this item is limited. Please consult customer service for more information.



### NTK: Notch Track

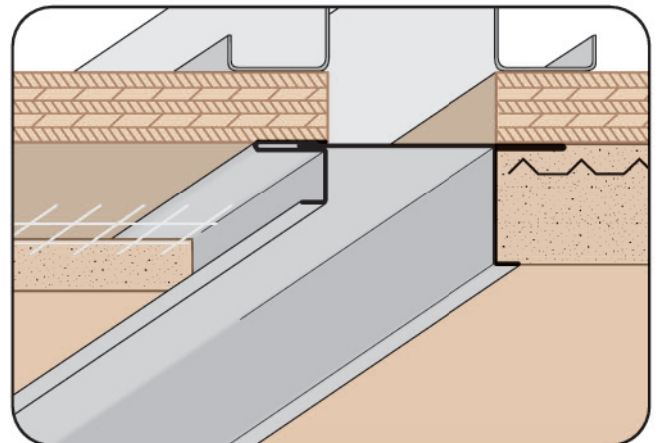
- Available in Galvanized Steel
- Used for floor joist blocking or horizontal backing in walls to allow support mounting various items to the walls.



### NVS: Narrow V Screed

- Available With Key Holes or No Holes
- Available in Aluminum, Copper, Galvanized Steel, Bonderized, Galvalume®, Stainless Steel or Zinc

A control joint with a minimal reveal. Available with key holes in the nailing flange for better plaster adhesion.



### OEC: Offset Expansion Channel Screed (2 Piece)

- Available With 1/8", 1/4" Vent Holes or No Holes
- Available in Aluminum, Copper, Galvanized Steel, Bonderized, Galvalume®, Stainless Steel or Zinc

Two piece adjustable version of our Offset Plaster Channel Screed that permits movement in a double stud condition or at a floor line.

