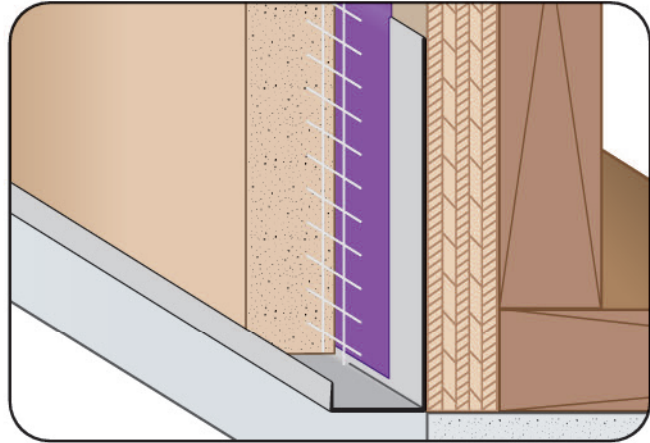


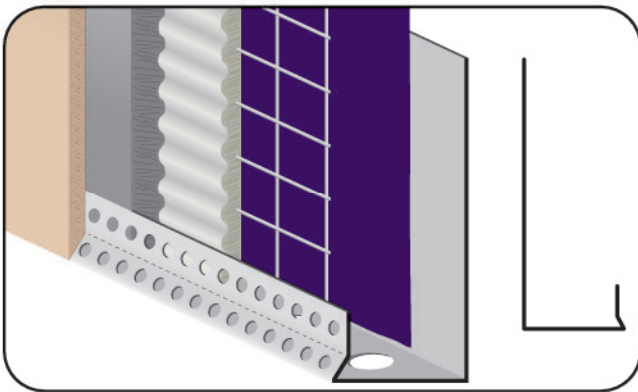
ICT: Inside Corner Control Joint

- Available in Aluminum, Copper, Galvanized Steel, Bonderized, Galvalume®, Stainless Steel or Zinc
- Use this product when needing a straight, clean inside edge at a vertical or horizontal corner. Provides a straight edge where soffit and wall meet.
- Note:** Attach panel per manufacturer's recommended installation instructions.



J-B: J Bead

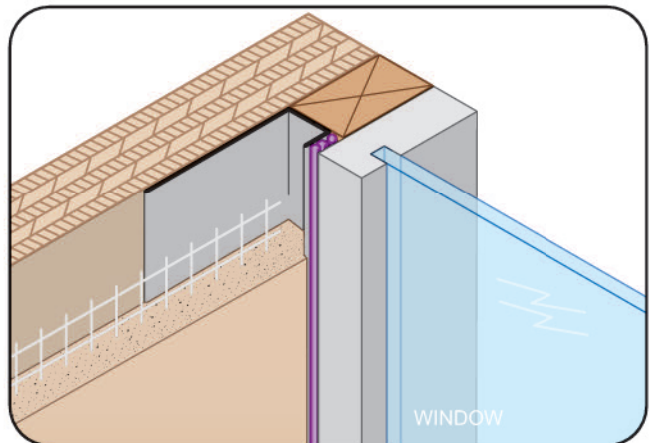
- Superior™ Moisture Protection
 - Available With 1/8", 1/2" Weep Holes or No Weep
 - Available Curved Upon Request
 - Aluminum, Copper, Galvanized Steel, Bonderized, Galvalume®, Stainless Steel or Zinc
- Standard plaster stop/casing bead for terminating stucco. Has a return key for finishing.



J-B88: Long Flange J Bead 88

- Patent Pending
- Includes 1/2" Weep Holes
- Available in Galvanized Steel, Galvalume® or Aluminum

Similar to the new SFC88 Short Flange "Finish Rite™" plaster trim, the J-B88 Long Flange J bead provides all the same features of controlling the brown coat thickness, but has a 3 1/2" nail flange and 1/2" diameter weep holes for those conditions where a weep function is required. No more excessive plaster build up! Control your finish, control your cost! Special sizes available. Please contact us for more information.



JCB: J Caulking Bead

- Superior™ Moisture Protection
 - Available Curved Upon Request
 - Available in Aluminum, Copper, Galvanized Steel, Bonderized, Galvalume®, Stainless Steel or Zinc
- Standard plaster stop/casing bead for terminating stucco with an extended return key for caulking