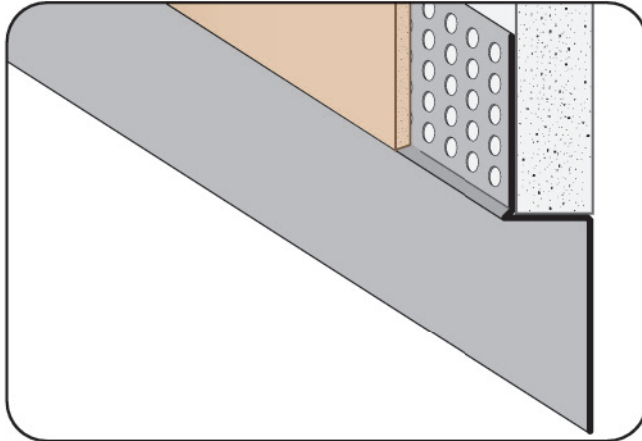




## CUSTOM SIZES AVAILABLE!

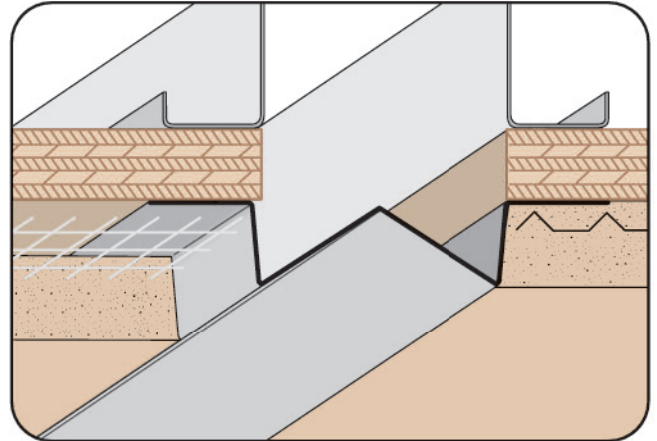
Stockton Custom Fabrication  
877-786-2587  
custom@StocktonProducts.com



### DTR: Drywall Termination Reveal

- Available Curved Upon Request
- Available in Aluminum, Copper, Galvanized Steel, Bonderized, Galvalume®, Stainless Steel or Zinc

Drywall reveal molding used at door frames and wall base application. Includes key holes for proper plaster adhesion.



### DVG: Double V Groove

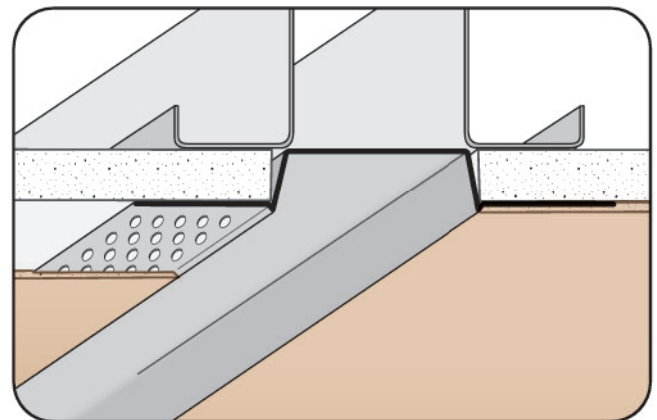
- Available Curved Upon Request
  - Available in Aluminum, Copper, Galvanized Steel, Bonderized, Galvalume®, Stainless Steel or Zinc
- A plaster channel screed that creates a decorative reveal with an interesting and unique appearance.



**ARCAT**

Stockton Products™ Has Partnered With ARCAT® To Make Our Product Information Available To You

ARCAT is a one-stop solution for finding the right Stockton Products' for your project. With ARCAT's easy to use site you can find our product information quickly and easily download our CSI Specs, CAD and BIM files you need. Check out Stockton Products™ on ARCAT.com today!  
[www.stpro.us/ARCAT](http://www.stpro.us/ARCAT)



### DWR: Drywall Reveal

- Available With 1/8", 1/4" Vent Holes or No Vent
  - Available Curved Upon Request
  - Available in Aluminum, Copper, Galvanized Steel, Bonderized, Galvalume®, Stainless Steel or Zinc
- Creates a decorative reveal in the drywall. The molding is attached after the drywall is installed, minimizing labor. Can be vented to permit air flow. Includes key holes for proper plaster adhesion.



**BSD SpecLink**

Stockton Products™ Is Now Listed On SpecLink! SpecLink Is One Of The Most Trusted Commercial Construction Specification Software In The Market. Create Specs Up To 70% Faster!