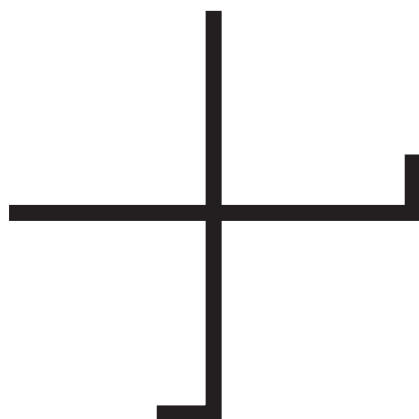
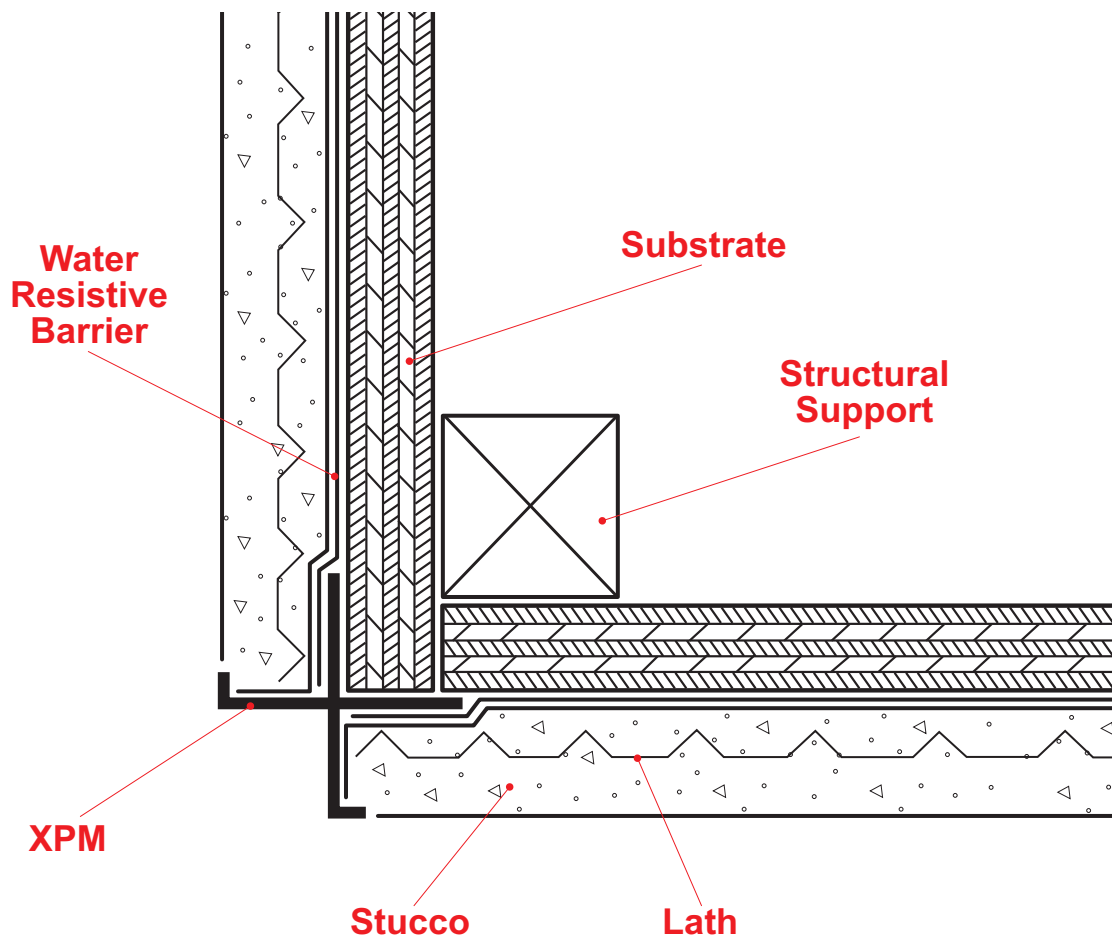




## XPM: X Plaster Molding



Creates a decorative inverted corner reveal detail for conventional 3-coat stucco at fascia/soffit conditions and around recessed entryways and doors. Can also be used to trim off the tops of pony walls and used as a drip edge on a fascia/soffit condition.

**Note:** This drawing is supplied solely to assist in the selection and application of product manufactured by Stockton Products. This drawing is generic in nature and should not be used in design or construction without an independent evaluation by a qualified Architect or Engineer of Record.

©2023 Stockton Products. All rights reserved worldwide. Product illustrations are for reference only. Rev 100123  
CALIFORNIA RESIDENTS: Please review our Prop 65 statement at [stpro.us/P65](http://stpro.us/P65) or visit [www.P65Warnings.ca.gov](http://www.P65Warnings.ca.gov)