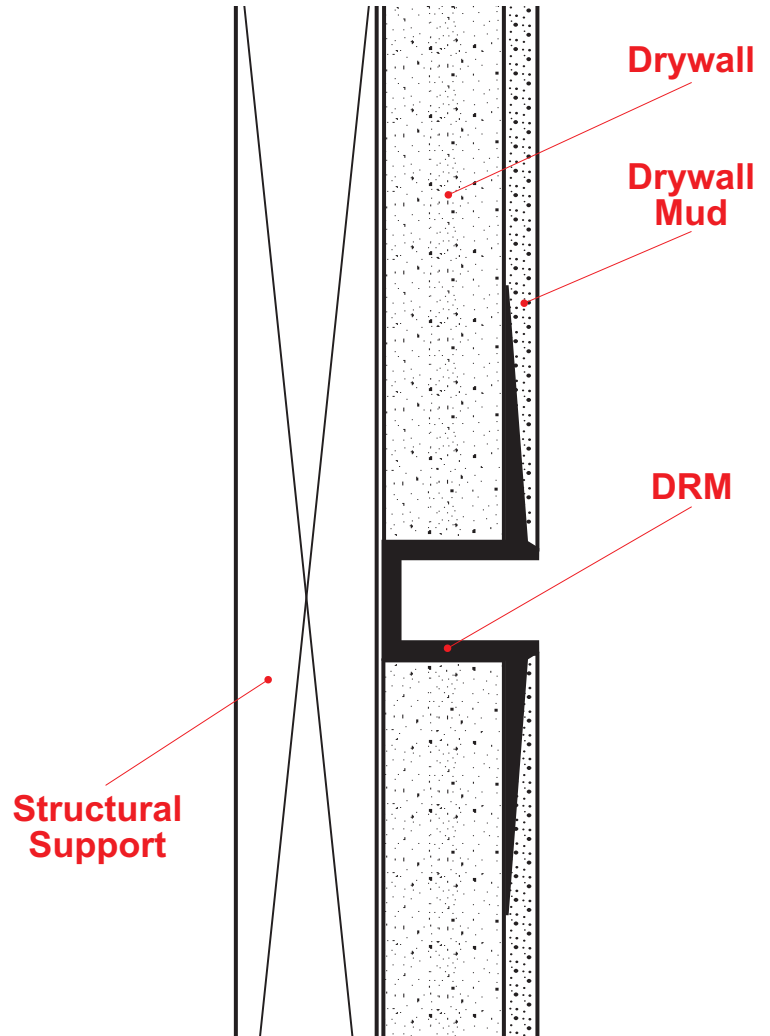


DRM: Wall Reveal



A reveal molding with taping flanges that provides a decorative reveal in drywall. This molding is installed after the drywall board, greatly improving installation ease and time. Includes key holes for drywall mud adhesion.

Note: This drawing is supplied solely to assist in the selection and application of product manufactured by Stockton Products. This drawing is generic in nature and should not be used in design or construction without an independent evaluation by a qualified Architect or Engineer of Record.

©2023 Stockton Products. All rights reserved worldwide. Product illustrations are for reference only. Rev 100123
CALIFORNIA RESIDENTS: Please review our Prop 65 statement at stpro.us/P65 or visit www.P65Warnings.ca.gov