



**SPECIAL SIZES AVAILABLE!**

Contact Stockton  
Custom Fabrication  
at (877) 786-2587

**EXTRUDED**

## WHD-FCP: Window Head Drip for Fiber Cement Panel

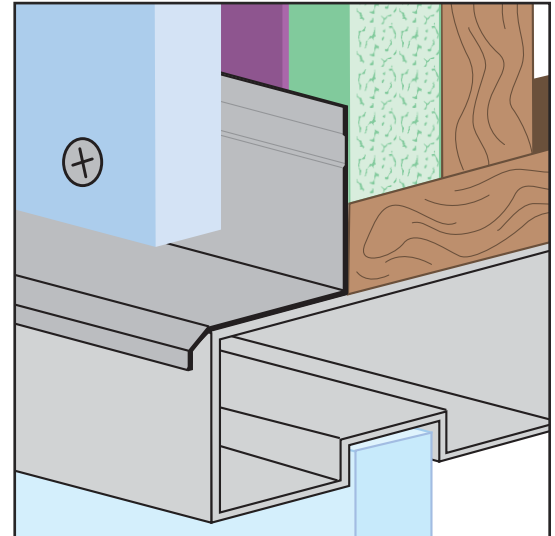
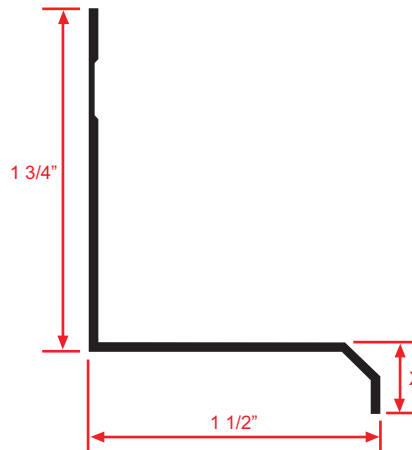
- Available in Aluminum Alloy (6063 T-5)

A multi-use drip molding that can be used at window and door heads, as well as at the foundation.

### Most Common Sizes

**X Sizes:** 3/8"

**Length:** 10'



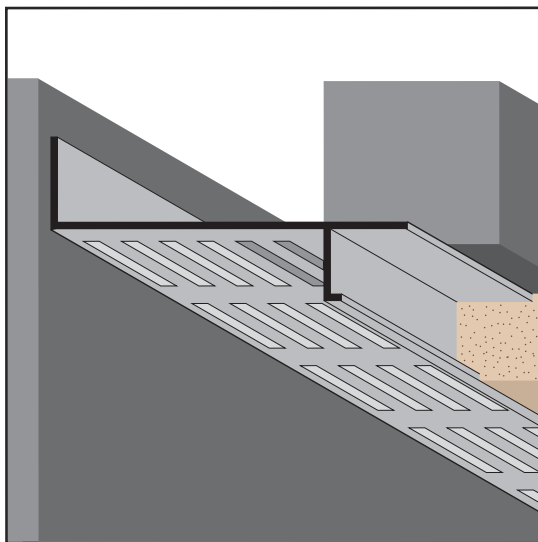
### Most Common Part Numbers:

**WHD FCP150 375E** WHD-FCP: X=3/8, Mill Finish, AL, 10'

**WHD FCP150 375EC** WHD-FCP: X=3/8, Clear Anodize, AL, 10'

**WHD FCP150 375EDB** WHD-FCP: X=3/8, Dark Bronze, AL, 10'

**WHD FCP150 375EP** WHD-FCP: X=3/8, Powder Coated, AL, 10'



## WPM: Plaster Soffit Reveal Molding

- With 1/8" x 1" Vent Slots
- Available Curved Upon Request
- Available in Aluminum Alloy (6063 T-5)

A screed that provides a plaster stop and creates a reveal at ceiling/wall conditions. Vented to provide free air flow at the perimeter.

**Note:** Available non-vented by special order.

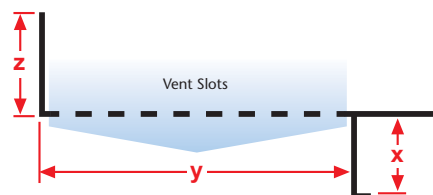
### Most Common Sizes

**X Sizes:** 3/4"

**Y Sizes:** 2", 3" or 4"

**Z Sizes:** 1"

**Length:** 10'



### Most Common Part Numbers:

**WPM625V200EC** WPM: X=5/8, Vent, Y=2, Z=1, Clear Anod, AL, 10'

**WPM75V300EC** WPM: X=3/4, Vent, Y=3, Z=1, Clear Anod, AL, 10'

**WPM75 300EC** WPM: X=3/4, Y=3, Z=1, Clear Anod, AL, 10'

**WPM75V400EC** WPM: X=3/4, Vent, Y=4, Z=1, Clear Anod, AL, 10'