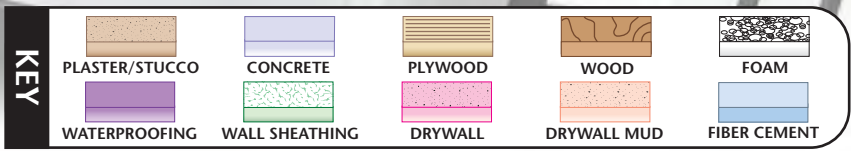


EXTRUDED



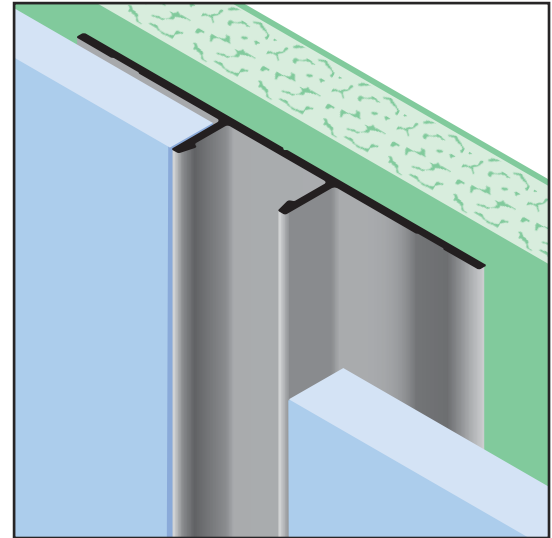
VR-FCP: Vertical Retainer for Fiber Cement Panel

- Available in Aluminum Alloy (6063 T-5)

The VR-FCP Vertical Retainer acts as the receiver for a Vertical Insert, Vertical Offset or Vertical Lap Insert. This allows for easy panel installation.

Note: Attach panel per manufacturer's recommended installation instructions.

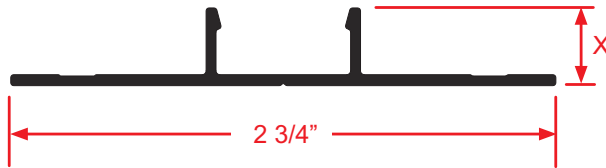
Note: Not to be used in horizontal applications.



Most Common Sizes

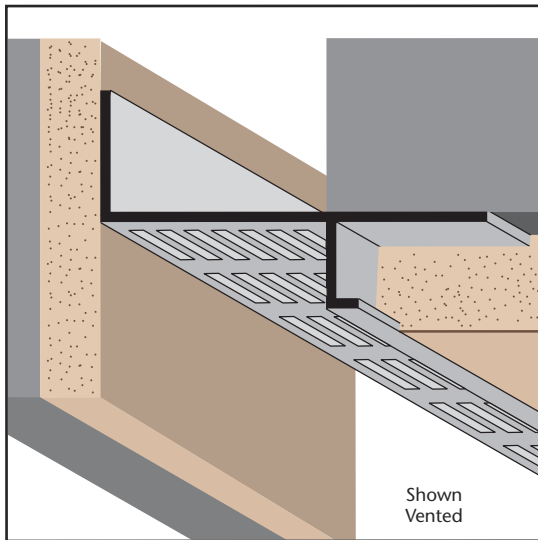
X Sizes: 3/8"

Length: 10'



Most Common Part Numbers:

VR FCP375E VR-FCP: X=3/8, Mill Finish, AL, 10'



VSMV: Vented Soffit Molding - 16V80

- Available With 1/8" x 1" Vent Slots or No Vents
- Available Curved Upon Request
- Available in Aluminum Alloy (6063 T-5)

Creates a vented reveal and plaster stop at a wall/ceiling condition.

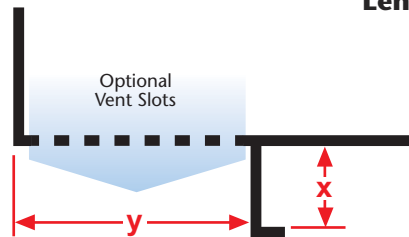
Note: Available non-vented on special order.

Most Common Sizes

X Sizes: 3/4"

Y Sizes: 2"

Length: 10'



Most Common Part Numbers:

1680VEC VSMV: X=3/4, Y=2, Clear Anodize, AL, 10'

1680VES VSMV: X=3/4, Y=2, Stripped Finish, AL, 10'