

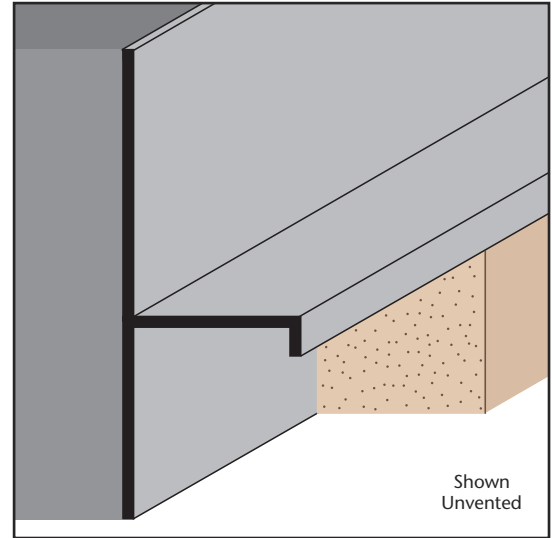
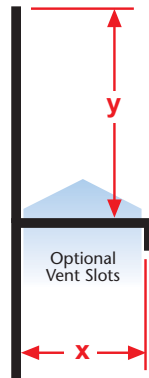
TRM: T Reveal Molding

- Available With 1/8" x 1" Vent Slots or No Vents
- Available Curved Upon Request
- Available in Aluminum Alloy (6063 T-5)

Provides a reveal and acts as a plaster stop/control screed for conventional 3-coat stucco at wall base and column base conditions where a reveal and plaster stop are required. Can be used to create a reveal at ceiling/wall conditions.

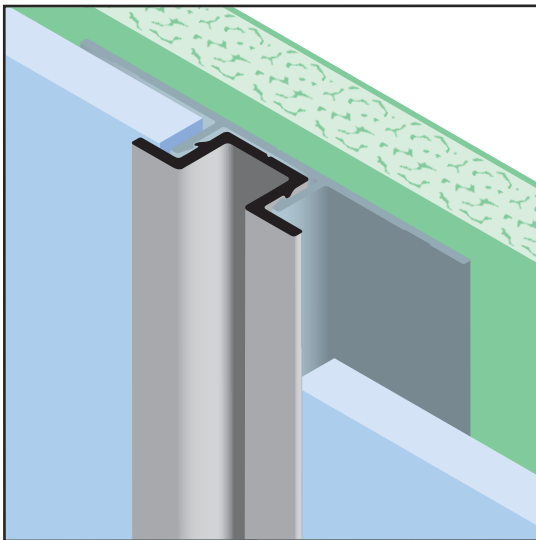
Most Common Sizes

- X Sizes:** 3/4"
Y Sizes: 3/4", 1", 1 1/2", 2", 2 1/2", 3" or 4"
Length: 10'



Most Common Part Numbers:

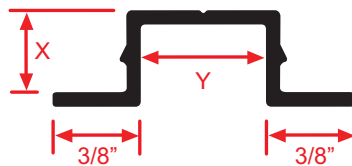
TRM75 112	TRM: X=3/4, Y=1 1/2, AL, 10'	TRM75 200EMB	TRM: X=3/4, Y=2, Medium Bronze Anodize, AL, 10'
TRM75 150EC	TRM: X=3/4, Y=1 1/2, Clear Anod, AL, 10'	TRM75 300EC	TRM: X=3/4, Y=3, Clear Anodize, AL, 10'
TRM75 150EC	TRM: X=3/4, Y=1 1/2, Clear Anod, AL, 10'	TRM75 400ES	TRM: X=3/4, Y=4, Stripped Finish, AL, 10'
TRM75 200EC	TRM: X=3/4, Y=2, Clear Anodize, AL, 10'		



VI-FCP: Vertical Insert for Fiber Cement Panel

- Available in Aluminum Alloy (6063 T-5)

The VI-FCP Vertical Insert creates an attractive 1/2" architectural reveal when used in conjunction with the VR-FCP Vertical Retainer.
 Note: Attach panel per manufacturer's recommended installation instructions.
Note: Not to be used in horizontal applications.
Note: The VR-FCP Retainer is sold separately, see page 128.



Most Common Sizes

- X Sizes:** 3/8"
Y Sizes: 1/2"
Length: 10'



Most Common Part Numbers:

VI FCP375 50EK	VI-FCP: X=3/8, Y=1/2, Fluorophore Paint, AL, 10'
VI FCP375 50EC	VI-FCP: X=3/8, Y=1/2, Clear Anodize, AL, 10'
VI FCP375 750ES	VI-FCP: X=3/8, Y=1/2, Stripped Finish, AL, 10'