



SPECIAL SIZES AVAILABLE!

Contact Stockton
Custom Fabrication
at (877) 786-2587

EXTRUDED

FPM: F Plaster Molding

- Available With 1/8" x 1" Vent Slots or No Vents
- Available With 1/8" Weep Holes or No Weep Holes
- Available Curved Upon Request
- Available in Aluminum Alloy (6063 T-5)

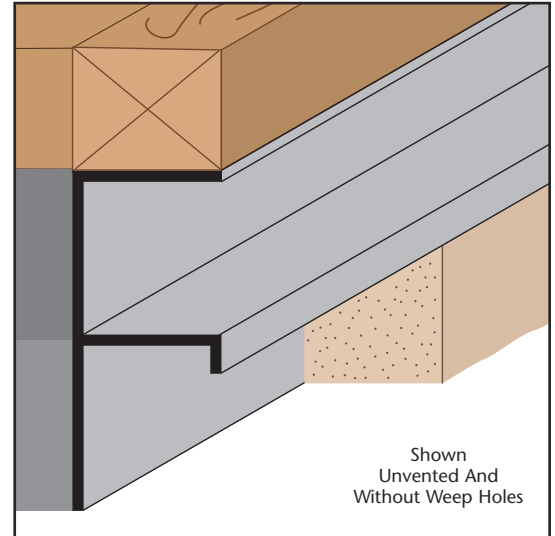
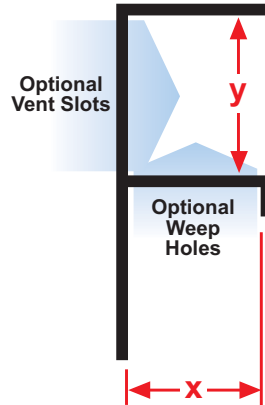
A plaster stop/control screed for conventional 3-coat stucco, used at the top or base of columns, the top of walls at the ceiling, or at the base to create a reveal. Also used at the top of windows to permit the continuation of a horizontal reveal at the window line.

Most Common Sizes

X Sizes: 3/4"

Y Sizes: 1/2", 3/4", 1", 1 1/2", 2",
2 1/2", 3" or 4"

Length: 10'



Most Common Part Numbers:

FPM75 100EC FPM: X=3/4, Y=1, Clear Anodize, AL, 10'

FPM75 150EC FPM: X=3/4, Vent, Y=1 1/2, Clear Anod, AL, 10'

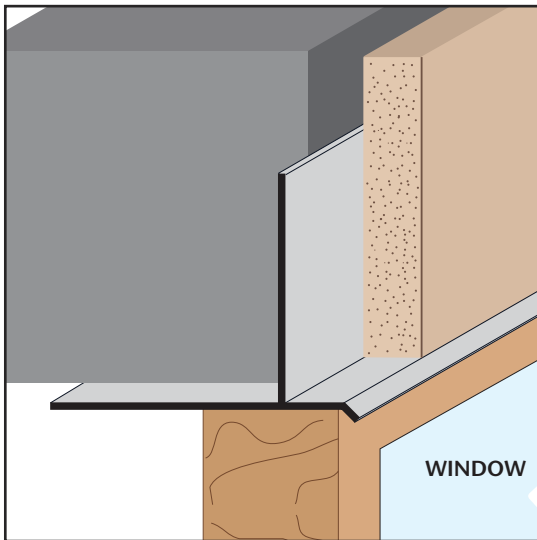
FPM75 200EC FPM: X=3/4, Y=2, Clear Anodize, AL, 10'

FPM75 50EC FPM: X=3/4, Y=1/2, Clear Anodize, AL, 10'

FPM75 75EC FPM: X=3/4, Y=3/4, Clear Anodize, AL, 10'

FPM75V200EC FPM: X=3/4, Vent, Y=2, Clear Anodize, AL, 10'

FPM75V75EC FPM: X=3/4, Vent, Y=3/4, Clear Anod, AL, 10'



FRWDM: Fascia/Recessed Window Drip Molding

- Available Curved Upon Request
- Available in Aluminum Alloy (6063 T-5)

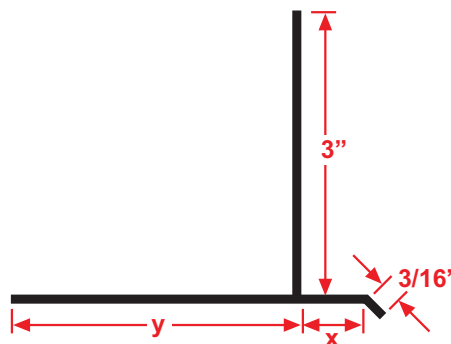
A plaster stop for fascia/soffit corner conditions that provides a 3 1/8" reveal leg with a drip edge for recessed window conditions where a drip edge is required. Can also be used when a caulking leg is required for backer rod and sealant.

Most Common Sizes

X Sizes: 7/8" or 1 3/8"

Y Sizes: 3 1/8"

Length: 10'



Most Common Part Numbers:

FRWDM138 400EC FRWDM: X=1 3/8, Y=4, Clear Anodize, AL, 10'

FRWDM138 400EDB FRWDM: X=3/4, Y=4, Dark Bronze, AL, 10'

FRWDM138 400EDB14FT FRWDM: X=1 3/8, Y=4, Dark Bronze, AL, 14'

FRWDM75 100EC FRWDM: X=3/4, Y=1, Clear Anodize, AL, 10'