



SPECIAL SIZES AVAILABLE!

Contact Stockton Custom Fabrication at (877) 786-2587

EXTRUDED

DRMZ: Z Wall Reveal

- Available With 1/8" x 1" Vent Slots or No Vents
- Available Curved Upon Request
- Available in Aluminum Alloy (6063 T-5)

"Z" style with a tapering flange that provides a reveal and a termination point for drywall at door frames, windows and wall bases. Includes key holes for drywall mud adhesion.

Note: Not all X, Y and Z combinations are available. Please consult with customer service.

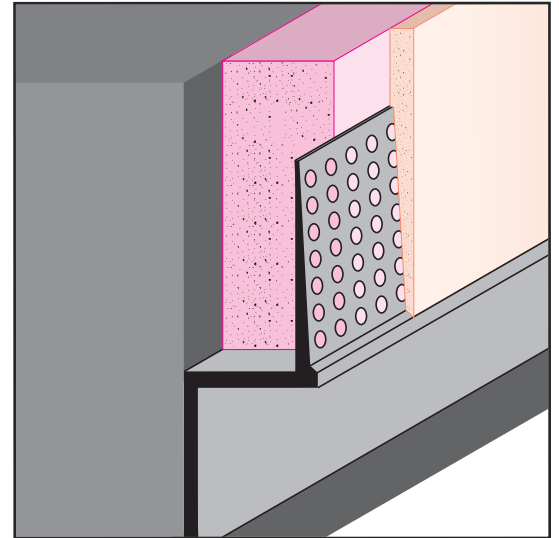
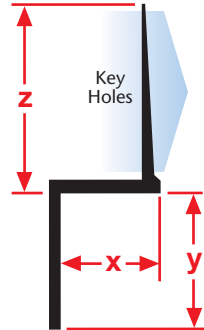
Most Common Sizes

X Sizes: 1/4", 1/2" or 5/8"

Y Sizes: 1/8", 1/4", 3/8", 1/2", 5/8", 3/4", 1", 1 1/2", 2", 3" or 4"

Z Sizes: 7/8"

Length: 10'



Most Common Part Numbers:

DRMZ50 50ECH DRMZ: X=1/2, Y=1/2, Chem-Film, AL, 10'

DRMZ625 100EC DRWZ: X=5/8, Y=1, Clear Anodize, AL, 10'

DRMZ625 100ECH DRMZ: X=5/8, Y=1, Chem-Film, AL, 10'

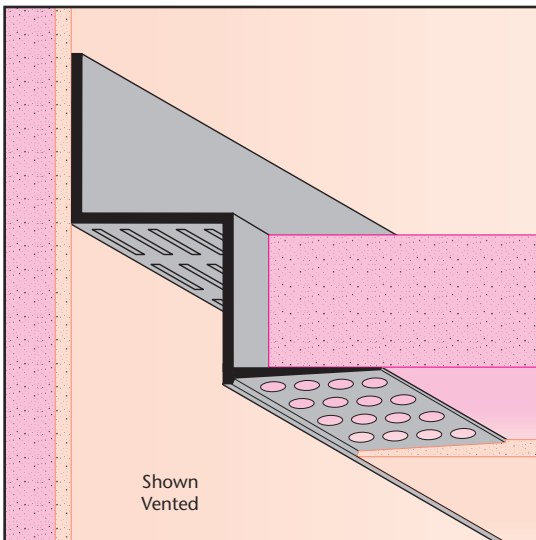
DRMZ625 25EC DRWZ: X=5/8, Y=1/4, Clear Anod, AL, 10'

DRMZ625 50EC DRWZ: X=5/8, Y=1/2, Clear Anod, AL, 10'

DRMZ625 50ECH DRMZ: X=5/8, Y=1/2, Chem-Film, AL, 10'

DRMZ625 50ECH DRMZ: X=5/8, Y=1/2, Chem-Film, AL, 10'

DRMZ625 625ECH DRMZ: X=5/8, Y=5/8, Chem-Film, AL, 10'



Shown Vented

DRWT: "W" Reveal

- Available With Vents or No Vents
- Available Curved Upon Request
- Available in Aluminum Alloy (6063 T-5)

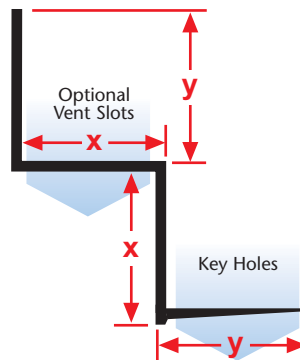
"W" style drywall molding with tapering flange that creates a reveal at a wall/drywall ceiling condition. Includes key holes for drywall mud adhesion.

Most Common Sizes

X Sizes: 3/4"

Y Sizes: 3/4"

Length: 10'



Most Common Part Numbers:

DRWT75 75ECH DRMT: X=3/4, Y=3/4, Chem-Film, AL, 10'