



**SPECIAL SIZES AVAILABLE!**

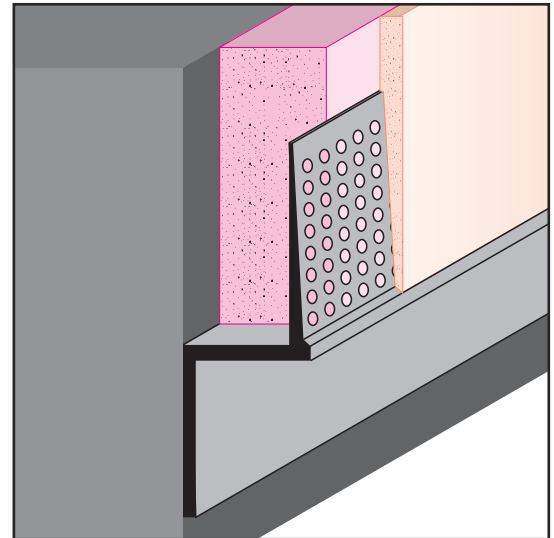
Contact Stockton Custom Fabrication at (877) 786-2587

# EXTRUDED

## DRMB: Reveal Base

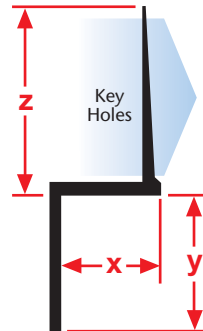
- Available Curved Upon Request
- Available in Aluminum Alloy (6063 T-5)

"Z" style with a taping flange that provides a reveal and a termination point for drywall in a base condition. Includes key holes for drywall mud adhesion.



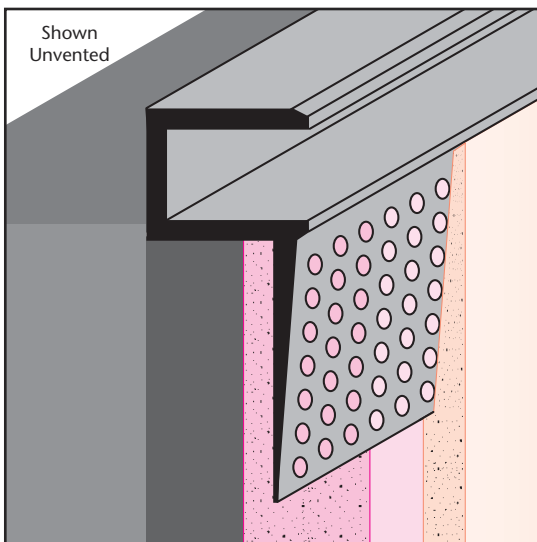
### Most Common Sizes

- X Sizes:** 5/8"
- Y Sizes:** 1", 1 1/2", 2", 2 1/2", 3", 3 1/2" or 4"
- Z Sizes:** 7/8"
- Length:** 10'



### Most Common Part Numbers:

- DRMB625V150 875EC** DRMB: X=5/8, Y=1 1/2, Z= 7/8, Clear Anod, AL, 10'
- DRMB625 200 875ECH** DRMB: X=5/8, Y=2, Z= 7/8, Chem-Film, AL, 10'
- DRMB625 350 875EC** DRMB: X=5/8, Y=3 1/2, Z= 7/8, Clear Anod, AL, 10'
- DRMB625 400 875EC** DRMB: X=5/8, Y=4, Z= 7/8, Clear Anod, AL, 10'



## DRMF: F Wall Reveal

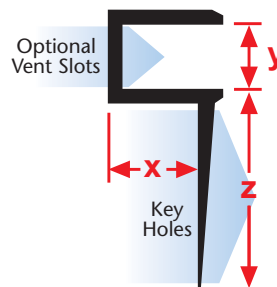
- Available With 1/8" x 1" Vent Slots or No Vents
- Available Curved Upon Request
- Available in Aluminum Alloy (6063 T-5)

"F" style with a taping flange that creates a reveal and board termination point at tops and bases of walls and at door and window frames. Includes key holes for drywall mud adhesion.

**Note:** Not all X Sizes (Depth) or Y Sizes (Reveal) combinations are available. Please consult with customer service.

### Most Common Sizes

- X Sizes:** 1/4", 1/2" or 5/8"
- Y Sizes:** 1/8", 1/4", 3/8", 1/2", 5/8", 3/4", 1", 1 1/2" or 2"
- Z Sizes:** 7/8"
- Length:** 10'



### Most Common Part Numbers:

- DRMF50 50EC** DRMF: X=1/2, Vent, Y=1/2, Clear Anod, AL, 10'
- DRMF50 50ECH** DRMF: X=1/2, Vent, Y=1/2, Chem-Film, AL, 10'
- DRMF625 100ECH** DRMF: X=5/8, Vent, Y=1, Chem-Film, AL, 10'
- DRMF625 50ECH** DRMF: X=5/8, Vent, Y=1/2, Chem-Film, AL, 10'
- DRMF625 50EC** DRMF: X=5/8, Vent, Y=1/2, Clear Anod, AL, 10'
- DRMF50 25ECH** DRMF: X=5/8, Vent, Y=1/4, Chem-Film, AL, 10'
- DRMF625 75ECH** DRMF: X=5/8, Vent, Y=3/4, Chem-Film, AL, 10'
- DRMF625 75EC** DRMF: X=5/8, Vent, Y=3/4, Clear Anod, AL, 10'