



**SPECIAL SIZES AVAILABLE!**  
 Contact Stockton  
 Custom Fabrication  
 at (877) 786-2587

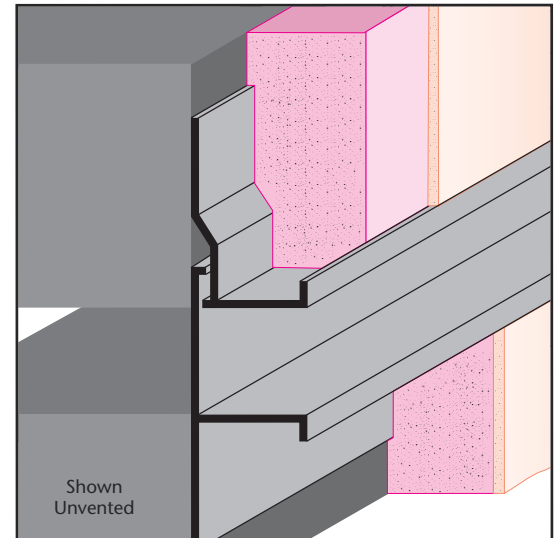
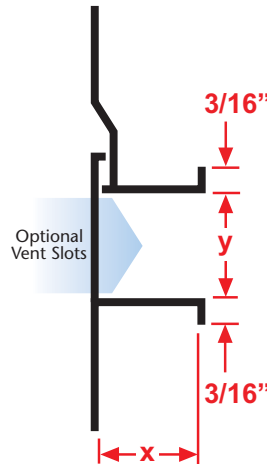
## DCS 50-2: Drywall Channel Screed 50 - 2 Piece

- Available With 1/8" x 1" Vent Slots or No Vents
- Available Curved Upon Request
- Available in Aluminum Alloy (6063 T-5)

A two-piece version of the DCS series molding that provides 1/4" +/- movement where a "true" expansion joint is required. Used for stucco over block or when only a 1/2" depth is required.

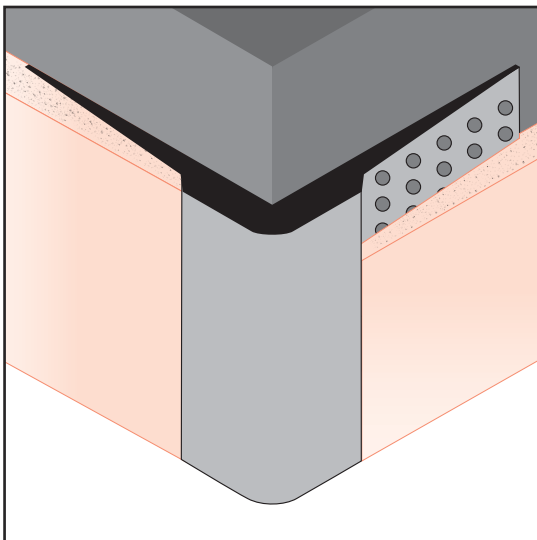
### Most Common Sizes

- X Sizes:** 1/2" or 3/4"  
**Y Sizes:** 1/4", 1/2", 3/4", 1", 1 1/2" or 2"  
**Length:** 10'



### Most Common Part Numbers:

<b>DCS50 100EC</b>	DCS 50-2: X=1/2, Y=1, Clear Anod., AL, 10'
<b>DCS50 200EC</b>	DCS 50-2: X=1/2, Y=3/4, Clear Anod, AL, 10'
<b>DCS50 50EC</b>	DCS 50-2: X=1/2, Y=1/2, Clear Anod AL, 10'
<b>DCS50 75EC</b>	DCS 50-2: X=1/2, Y=1, Clear Anodize, AL, 10'



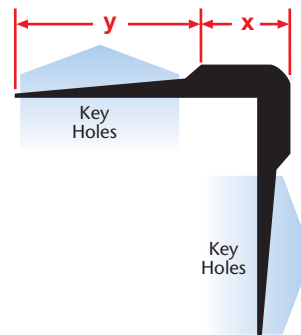
## DMCT: High Strength Corner Trim

- Available Curved Upon Request
- Available in Aluminum Alloy (6063 T-5)

A 90° outside corner with taping flanges for drywall. Provides a high strength corner for high impact areas. Includes key holes for drywall mud adhesion.

### Most Common Sizes

- X Sizes:** 3/8"  
**Y Sizes:** 7/8"  
**Length:** 10'



### Most Common Part Numbers:

<b>DMCT375EC</b>	DMCT: X=3 3/4, Clear Anodize, AL, 10'
------------------	---------------------------------------