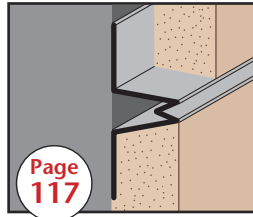


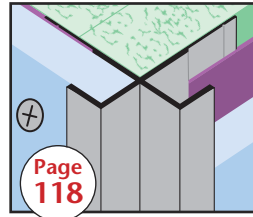
Page 117

JPM:
J Plaster Molding



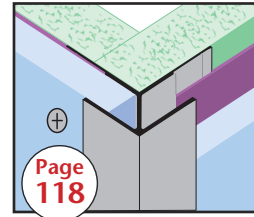
Page 117

NVS:
Narrow V Screed



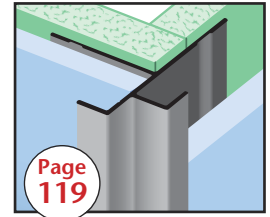
Page 118

OC-FCP:
Outside Corner for
Fiber Cement Panels



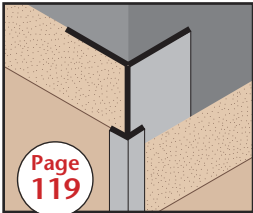
Page 118

OCG-FCP: Outside
Corner Guard for
Fiber Cement Panels



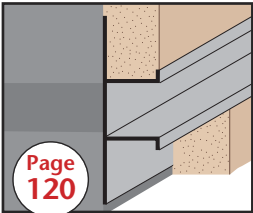
Page 119

OCT-FCP:
Outside Corner
Transition for FCP



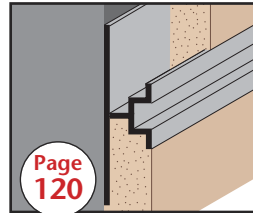
Page 119

PCM:
Plaster Corner Molding



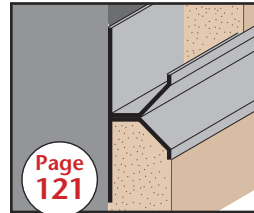
Page 120

PCS:
Plaster Channel Screed



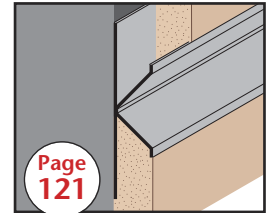
Page 120

PCS 50-25/25:
Plaster Channel Screed
50-25/25



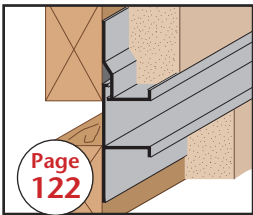
Page 121

PCS 75 Short V:
Plaster Channel Screed
Short V



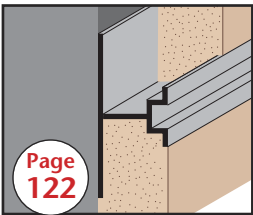
Page 121

PCS 75 Wide V:
Plaster Channel Screed
Wide V



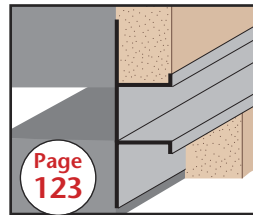
Page 122

PCS 75-2:
Plaster Channel Screed
75-2 Piece



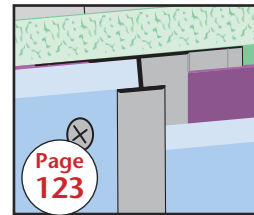
Page 122

PCS 75-25/25:
Plaster Channel Screed
75-25/25



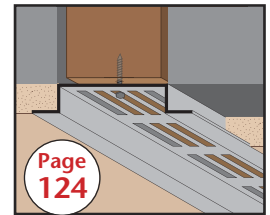
Page 123

PCS DA:
Plaster Channel
Screed DA



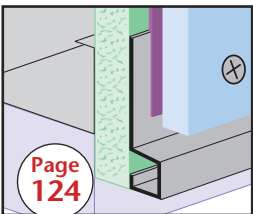
Page 123

PJ-FCP:
Panel Joiner for
Fiber Cement Panel



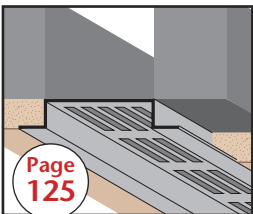
Page 124

RBSV:
Removable Balcony
Soffit Vent



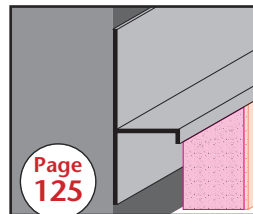
Page 124

SB-FCP:
Starter Base for
Fiber Cement Panel



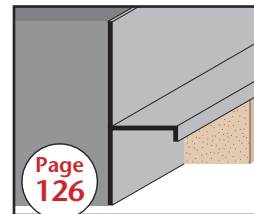
Page 125

SV:
Soffit Vent



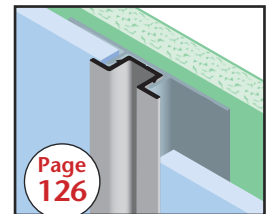
Page 125

TDM:
T Drywall Molding



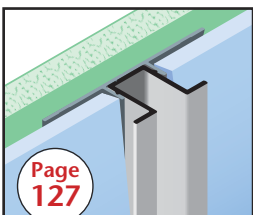
Page 126

TRM:
T Reveal Molding



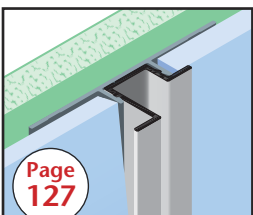
Page 126

VI-FCP:
Vertical Insert for FCP



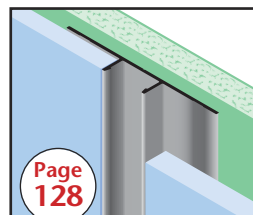
Page 127

VLI-FCP:
Vertical Lap Insert
for FCP



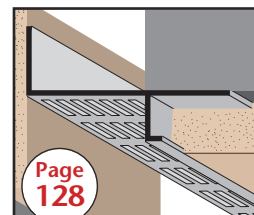
Page 127

VO-FCP:
Vertical Offset Insert
for FCP



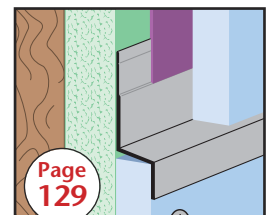
Page 128

VR-FCP:
Vertical Retainer
for FCP



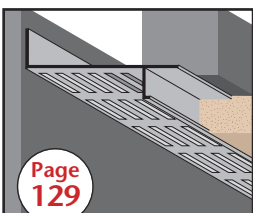
Page 128

VSMV:
Vented Soffit
Molding - 16V80



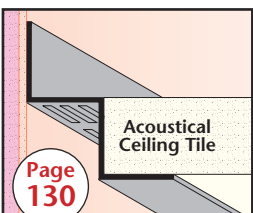
Page 129

WHD-FCP: Window
Head Drip for FCP



Page 129

WPM: Plaster
Soffit Reveal Molding



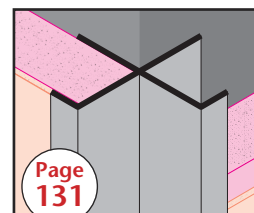
Page 130

WRM:
W Reveal Molding



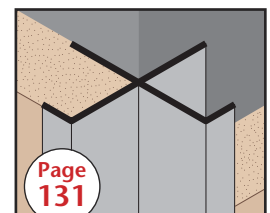
Page 130

WS-FCP:
Weep Screed for FCP



Page 131

XDM: X Drywall
Corner Molding



Page 131

XPM:
X Plaster Molding