

Fiber Cement Panel Moldings From Stockton Products™

Stockton Products™ now offers a complete line of extruded aluminum moldings for use with 5/16" Fiber Cement Panels (FCP).

Construction using weather-resistant Fiber Cement Panels siding has become a popular choice among architects and builders, particularly for extreme weather regions. Known for its versatility, durability and performance, construction using Fiber Cement Panel is an excellent choice for all types of commercial and residential projects.

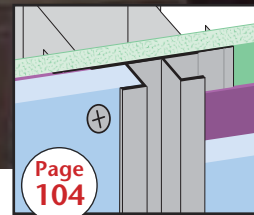
Stockton Products' line of moldings gives you the ability to enhance the aesthetic look of any Fiber Cement Panel project as well as providing a solution for any condition and detail when using this style of construction.

Featuring

- 6063 T5 Extruded Aluminum
- Standard Finish Clear Anodized
- Other Finishes Available, Contact Customer Service
- 10' Cut Length

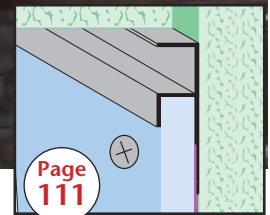


17 Profiles To Choose From!



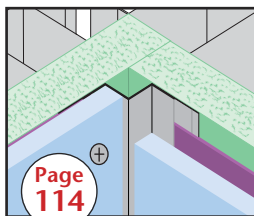
Page 104

CR-FCP: Channel Reveal for FCP



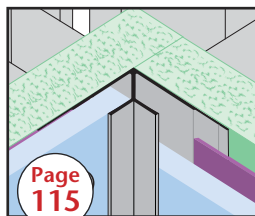
Page 111

F MOLD-FCP: F Mold for FCP



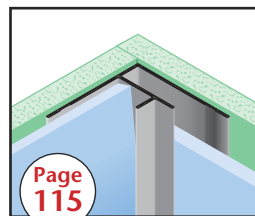
Page 114

IC-FCP: Inside Corner for FCP



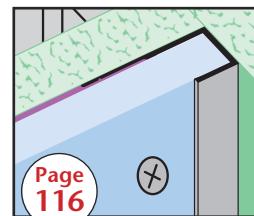
Page 115

ICR-FCP: Inside Corner Reveal for FCP



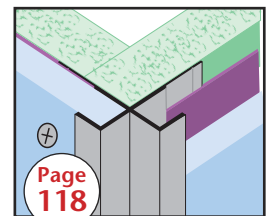
Page 115

ICT-FCP: Inside Corner Transition for FCP



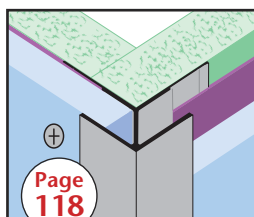
Page 116

J MOLD-FCP: J Mold for FCP



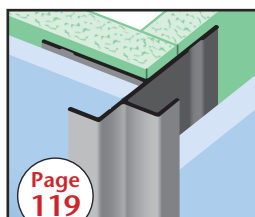
Page 118

OC-FCP: Outside Corner for FCP



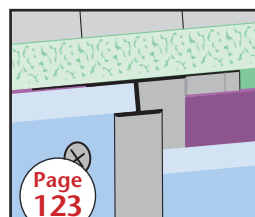
Page 118

OCG-FCP: Outside Corner Guard for FCP



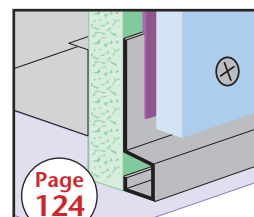
Page 119

OCT-FCP: Outside Corner Transition for FCP



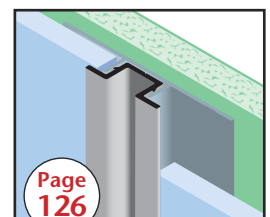
Page 123

PJ-FCP: Panel Joiner for FCP



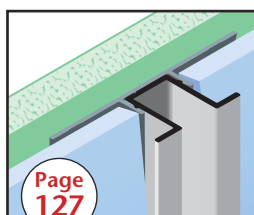
Page 124

SB-FCP: Starter Base for FCP



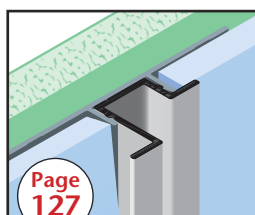
Page 126

VI-FCP: Vertical Insert for FCP



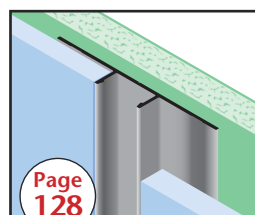
Page 127

VLI-FCP: Vertical Lap Insert for FCP



Page 127

VO-FCP: Vertical Offset Insert for FCP



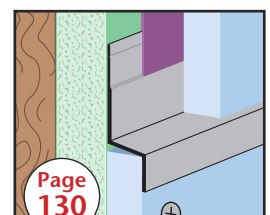
Page 128

VR-FCP: Vertical Retainer for FCP



Page 129

WHD-FCP: Window Head Drip for FCP



Page 130

WS-FCP: Weep Screed for FCP