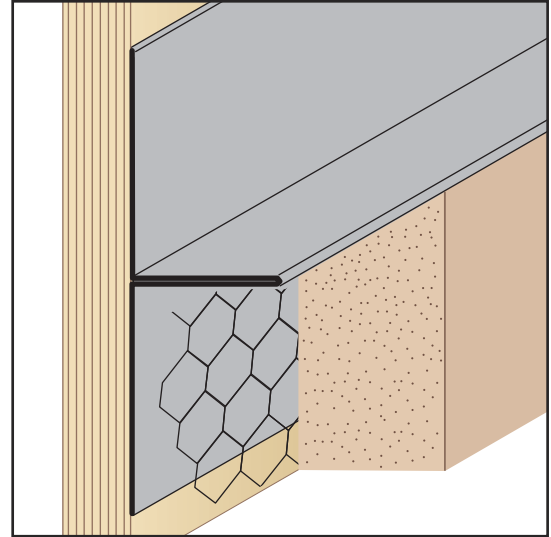


TRM: T-Reveal Mold

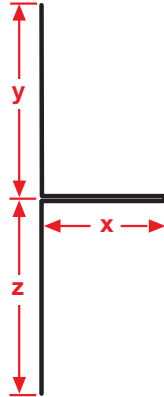
- Special Sizes Available, Contact Customer Service For Details
- SolidGround® Design For Moisture Protection
- Available in Aluminum (A), Copper (C), Galvanized Steel (GS), Bonderized (BN), Galvalume® (GVM), Stainless Steel (SS) or Zinc (Z)

(See Our Materials Guide For Details, Page 40)

One-piece SolidGround® design feature mitigates the concern of moisture penetration in a horizontal condition. Provides a reveal and plaster stop at parapet top and function as a depth screed. Can be used at ceiling to wall conditions when dealing with dissimilar materials.

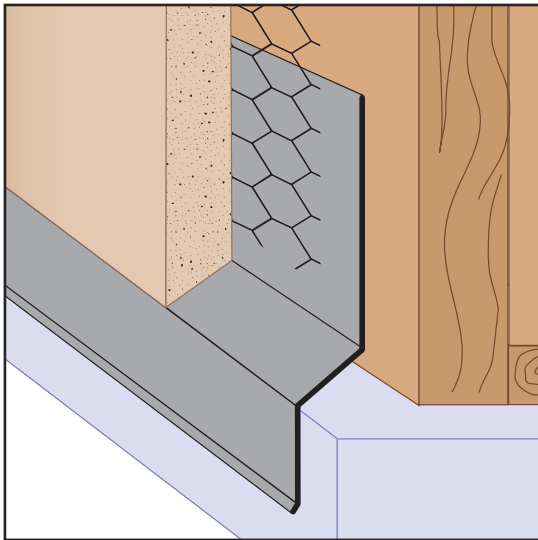


- Most Common Sizes**
- X Sizes:** 3/4", 7/8", 1 1/4" or 1 3/8"
 - Y Sizes:** 1", 1 1/2" or 2"
 - Z Sizes:** 1", 1 1/2", 2" or 2 1/2"
 - Length:** 120"



Most Common Part Numbers:

TRM034 012 112	TRM: X=3/4, Y=1/2, Z=1 1/2, GS, 10'	TRM138 112 112	TRM: X=1 3/8, Y=1 1/2, Z=1 1/2, GS, 10'
TRM034 112 100	TRM: X=3/4, Y=1 1/2, Z=1, GS, 10'	TRM138 200 200SS	TRM: X=1 3/8, Y=2, Z=2, SS, 10'
TRM078 112 100	TRM: X=7/8, Y=1 1/2, Z=1, GS, 10'	TRM75 50EC	TRM: X=3/4, Y=1/2, Z=1, Clear Anod, 10'
TRM114 200 212A	TRM: X=1 1/4, Y=2, Z=2 1/2, A, 10'		

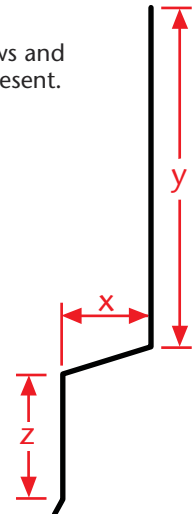


TSF: Transition Step Flashing

- Special Sizes Available, Contact Customer Service For Details
 - Available Curved Upon Request
 - Available in Aluminum (A), Copper (C), Galvanized Steel (GS), Bonderized (BN), Galvalume® (GVM), Stainless Steel (SS) or Zinc (Z)
- (See Our Materials Guide For Details, Page 40)

A step flashing that provides a drip edge for top of windows and door conditions or where special flashing conditions are present.

- Most Common Sizes**
- X Sizes:** 1/2", 3/4", 7/8", 1" or 1 3/8"
 - Y Sizes:** 3 1/2", 4" or 5"
 - Z Sizes:** 1/2", 3/4", 1" or 2"
 - Length:** 120"



Most Common Part Numbers:

TSF034 312 012	TSF: X=3/4, Y=3 1/2, Z=1/2, GS, 10'	TSF078 500 200	TSF: X=7/8, Y=5, Z=2, GS, 10'
TSF078 312 034	TSF: X=7/8, Y=3 1/2, Z=3/4, GS, 10'	TSF114 112 012	TSF: X=1 1/4, Y=1 1/2, Z=1/2, GS, 10'
TSF078 500 012	TSF: X=7/8, Y=5, Z=1/2, GS, 10'	TSF214 400 100	TSF: X=2 1/4, Y=4, Z=1, GS, 10'
TSF078 500 100	TSF: X=7/8, Y=5, Z=1, GS, 10'	TSF214 500 100	TSF: X=2 1/4, Y=5, Z=1, GS, 10'