



SPECIAL SIZES AVAILABLE!

Contact Stockton Custom Fabrication at (877) 786-2587

TPC: Two Piece Expansion Corner - 2 Piece

- Special Sizes Available, Contact Customer Service For Details
 - Available With 1/8", 1/4" Vent Holes or No Holes
 - Available in Aluminum (A), Copper (C), Galvanized Steel (GS), Bonderized (BN), Galvalume® (GVM), Stainless Steel (SS) or Zinc (Z)
- (See Our Materials Guide For Details, Page 40)

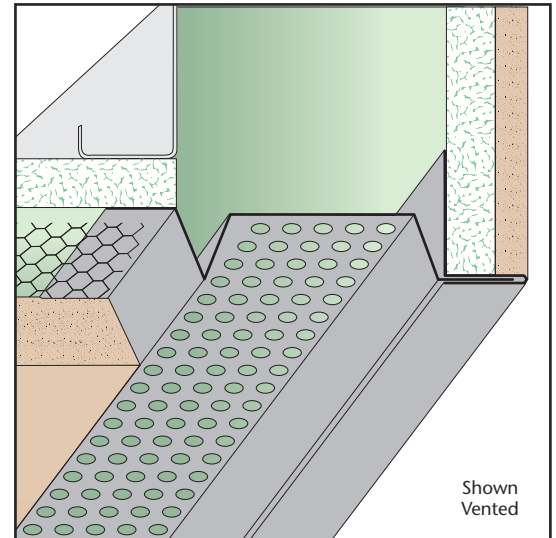
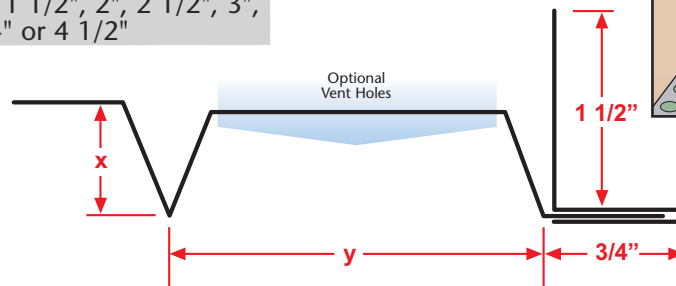
A functional two piece product specifically designed for the fascia/soffit corner that provides a reveal and allows movement at this condition.

Most Common Sizes

X Sizes: 1/2", 3/4", 7/8", 1" or 1 1/2"

Y Sizes: 3/4", 1", 1 1/2", 2", 2 1/2", 3", 3 1/2", 4" or 4 1/2"

Length: 120"



Most Common Part Numbers:

TPC012V200 TPC: X=1/2, 1/8 Vent, Y=2, GS, 10'

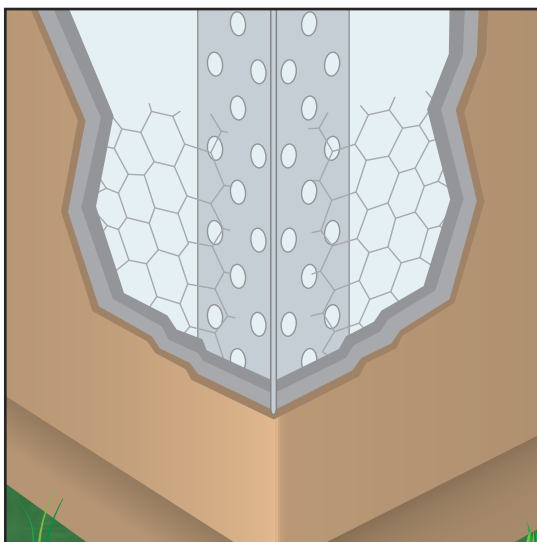
TPC012V200PTA TPC: X=1/2, 1/8 Vent, Y=2 Part A, GS, 10'

TPC034 100 TPC: X=3/4, Y=1, GS, 10'

TPC034V300J TPC: X=3/4, 1/4 Vent, Y=3, GS, 10'

TPC078 112

TPC: X=7/8, Y=1 1/2, GS, 10'

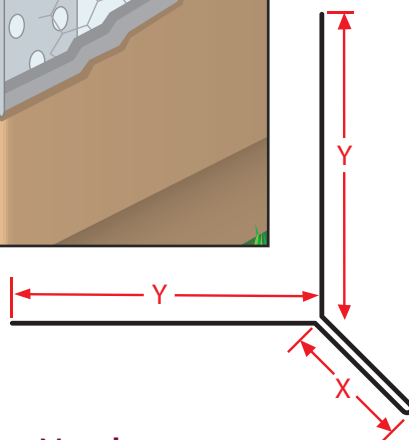


TRC: Tru-Corner™

- Special Sizes Available, Contact Customer Service For Details
- Available in Zinc (Z) or Stainless Steel (SS)

A solid metal trim that creates a smooth exterior corner. Longer attachment legs help assure proper alignment to achieve a straight and true corner, particularly on irregular framing. Includes 1/4" diameter staggered key holes to aid in keying the stucco. Available in stainless steel and zinc for maximum anti-corrosive protection.

Note: Ground depth (X Sizes) and leg lengths (Y Sizes) can not be mixed. Sizes are as listed.



Available Sizes

3/4" X Size with 1 3/4" Y Size in Zinc

7/8" X Size with 1 5/8" Y Size in Zinc

1 1/8" X Size with 1 5/8" Y Size in Zinc

3/4" X Size with 1 3/4" Y Size in Stainless Steel

7/8" X Size with 1 5/8" Y Size in Stainless Steel

1 1/8" X Size with 1 7/8" Y Size in Stainless Steel

1 3/8" X Size with 2" Y Size in Stainless Steel

Length: 120"



Most Common Part Numbers:

TRC034 134SS TRC: X=3/4, Y=1 3/4, SS, 10'

TRC034 134Z TRC: X=3/4, Y=1 3/4, Z, 10'

TRC078 158SS TRC: X=7/8, Y=1 5/8, SS, 10'

TRC078 158Z TRC: X=7/8, Y=1 5/8, Z, 10'

TRC078K158SS TRC: X=7/8, 1/8 Keyhole, Y=1 5/8, SS, 10'

TRC118 158Z TRC: X=1 1/8, Y=1 5/8, Z, 10'

TRC118 178SS TRC: X=1 1/8, Y=1 7/8, SS, 10'