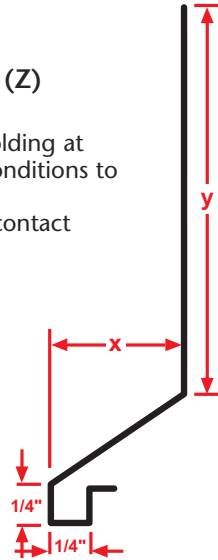
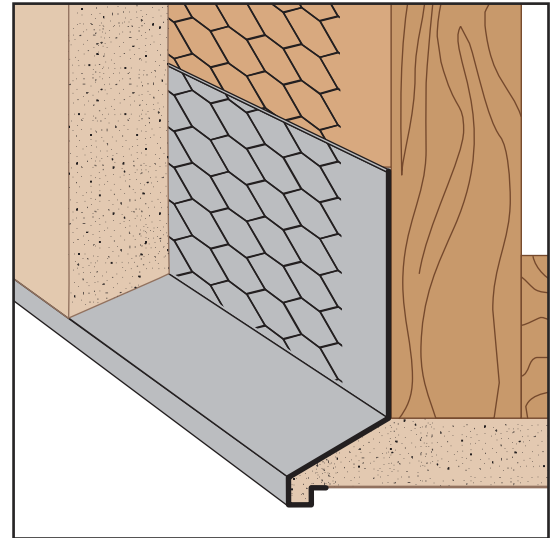


SDE: #12 Soffit Drip Edge™

- Special Sizes Available, Contact Customer Service For Details
- Superior™ Moisture Protection
- No Weep Holes
- Available Curved Upon Request
- Available in Aluminum (A), Copper (C), Galvanized Steel (GS), Bonderized (BN), Galvalume® (GVM), Stainless Steel (SS) or Zinc (Z) (See Our Materials Guide For Details, Page 40)

The #12 drip molding is designed to be used as a drip molding at the fascia/soffit transition as well as at recessed window conditions to provide a decorative drip edge and plaster stop.

Note: Factory curving is available, but limited, so please contact customer service for more information.



Most Common Sizes

X Sizes: 5/8", 3/4" or 7/8"

Y Sizes: 2 1/2", 3 1/2" or 4"

Length: 120"

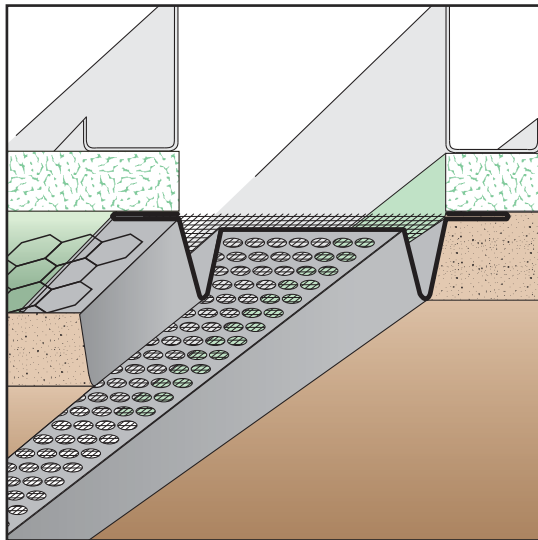
Most Common Part Numbers:

SDE078 312 SDE: X=7/8, Y=3 1/2, GS, 10'

SDE078 312SS SDE: X=7/8, Y=3 1/2, SS, 10'

SDE078 400 SDE: X=7/8, Y=4, GS, 10'

SDE078 400SS SDE: X=7/8, Y=4, SS, 10'



SES: Ember Stop™ Soffit Vent

- Special Sizes Available, Contact Customer Service For Details
- Galvanized Steel Only

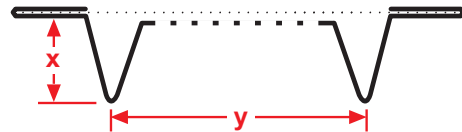
Allows air in while also designed for protection against ember entry. All the same features and value of our standard SVR screed, but with the addition of a 0.062, 16-16 (1/16") aluminum screen. Includes 1/8" vent holes. US Patent 77,957,955

Most Common Sizes

X Sizes: 1/2", 3/4" or 7/8"

Y Sizes: 2", 3" or 4"

Length: 120"



Complies with section 706A,
CBCS Wildfire Protection Provisions.

Most Common Part Numbers:

SES012V200 SES: X=1/2, 1/8 Vent, Y=2, GS, 10'

SES012V400 SES: X=1/2, 1/8 Vent, Y=4, GS, 10'

SES034V200 SES: X=3/4, 1/8 Vent, Y=2, GS, 10'

SES034V300 SES: X=3/4, 1/8 Vent, Y=3, GS, 10'

SES034V400 SES: X=3/4, 1/8 Vent, Y=4, GS, 10'

SES078V200 SES: X=7/8, 1/8 Vent, Y=2, GS, 10'

SES078V400 SES: X=7/8, 1/8 Vent, Y=7, GS, 10'