

C-G: Chamfer Groove

- Special Sizes Available, Contact Customer Service For Details
 - Available in Aluminum (A), Copper (C), Galvanized Steel (GS), Bonderized (BN), Galvalume® (GVM), Stainless Steel (SS) or Zinc (Z)
- (See Our Materials Guide For Details, Page 40)

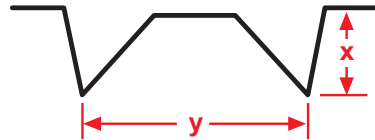
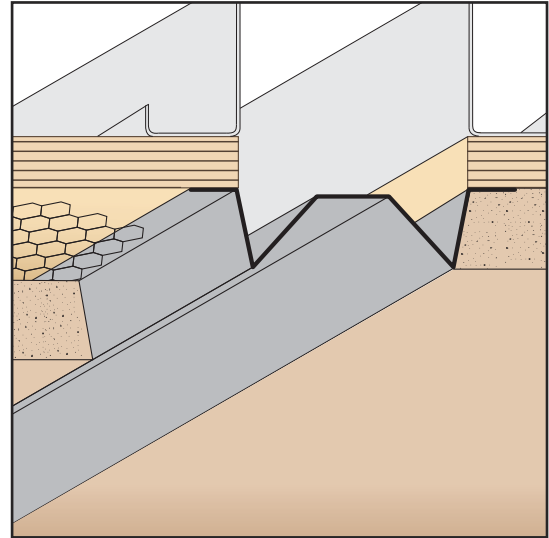
A unique reveal/control joint for plaster.

Most Common Sizes

X Sizes: 1/2", 5/8", 3/4", 7/8" or 1"

Y Sizes: 3/4", 1", 1 1/2", 2", 2 1/2", 2 3/4", 3", 3 1/2" or 4"

Length: 120"



Most Common Part Numbers:

C G012 312 C-G: X=1/2, Y=3 1/2, GS, 10'

C G012 400 C-G: X=1/2, Y=4, GS, 10'

C G034 034 C-G: X=3/4, Y=3/4, GS, 10'

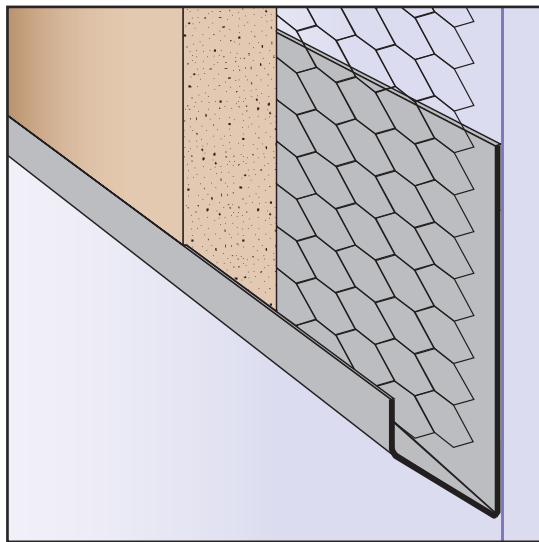
C G034 212 C-G: X=3/4, Y=2 1/2, GS, 10'

C G034 300 C-G: X=3/4, Y=3, GS, 10'

C G078 200 C-G: X=7/8, Y=2, GS, 10'

C G078 212 C-G: X=7/8, Y=2 1/2, GS, 10'

C G100 400 C-G: X=1, Y=4, GS, 10'



CPB: Casing Plaster Bead

- Special Sizes Available, Contact Customer Service For Details
 - Superior™ Moisture Protection
 - Available Curved Upon Request
 - Available in Aluminum (A), Copper (C), Galvanized Steel (GS), Bonderized (BN), Galvalume® (GVM), Stainless Steel (SS) or Zinc (Z)
- (See Our Materials Guide For Details, Page 40)

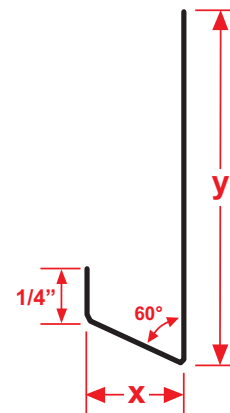
A plaster stop/casing bead used to terminate the stucco at the base of walls and/or where a plaster stop is required. Has a 60° angle which creates a unique look.

Most Common Sizes

X Sizes: 1/2", 3/4", 7/8", 1" or 1 3/8"

Y Sizes: 1 1/2", 2 1/2" or 3 1/2"

Length: 120"



Most Common Part Numbers:

CPB034 112 CPB: X=3/4, Y=1 1/2, GS, 10'

CPB034 212 CPB: X=3/4, Y=2 1/2, GS, 10'

CPB034 212SS CPB: X=3/4, Y=2 1/2, SS, 10'

CPB078 112 CPB: X=7/8, Y=1 1/2, GS, 10'

CPB078 112Z CPB: X=7/8, Y=1 1/2, Z, 10'

CPB078 312 CPB: X=7/8, Y=3 1/2, GS, 10'

CPB078 312SS CPB: X=7/8, Y=3 1/2, SS, 10'

CPB138 212 CPB: X=1 3/8, Y=2 1/2, GS, 10'