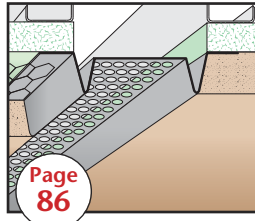
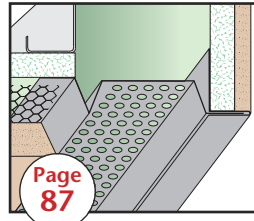


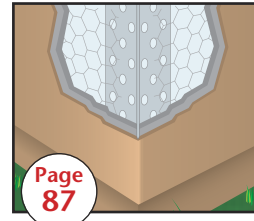
STU:
Stud



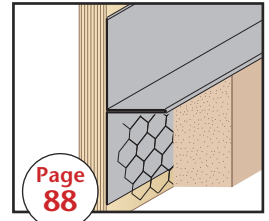
SVR:
Soffit Vent/Reveal
Screed



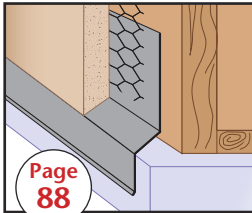
TPC:
Two Piece
Expansion Corner



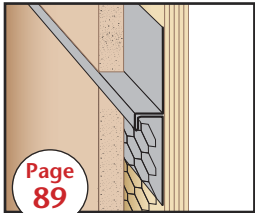
TRC:
Tru-Corner®



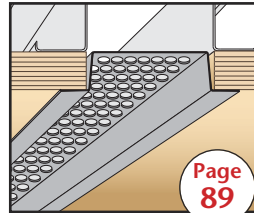
TRM:
T-Reveal Mold



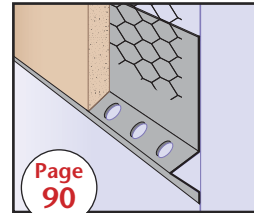
TSF:
Transition Step Flashing



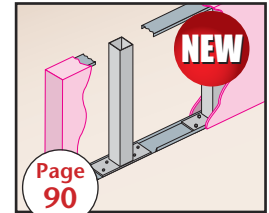
TWM:
T Water-Resistant
Molding



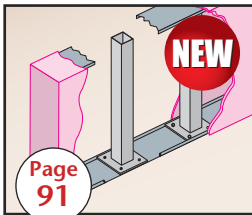
VHC:
Vented Hat
Channel



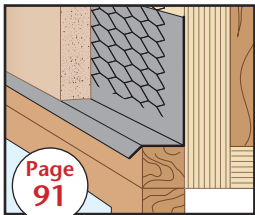
W-S:
Weep Screed (#7)



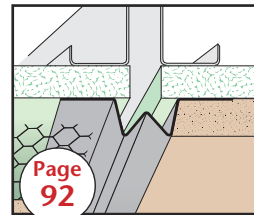
WPX-R:
Wall Post
(Rectangular Base)



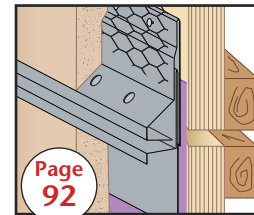
WPX-S:
Wall Post
(Square Base)



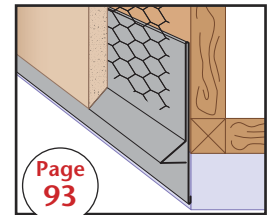
WTP:
Window
Termination Point



WVS:
Wide V Screed



WXJ®: Water
Management Expansion
Joint - 2 Piece



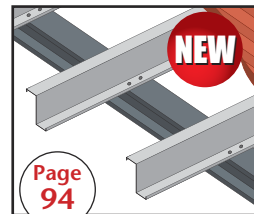
XLF:
XL Foundation
Screed



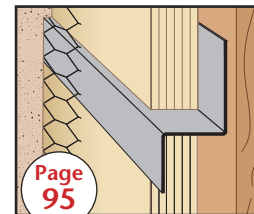
Z-B:
Z-Bar



Z-B/LP:
Z-Bar Low Profile



Z-P:
Custom Z-Purlin



Z-T:
Z-Trim



Did you know?

- We offer CSI Specifications, CAD Details and BIM Objects for most of our products on ARCAT®. The information is also available on our website with additional info like SDS data sheets.

www.StocktonProducts.com

