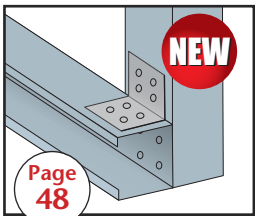


Stockton Products' Metal

A variety of standard and custom metal products are available for ventilation, water management, expansion and decorative purposes.



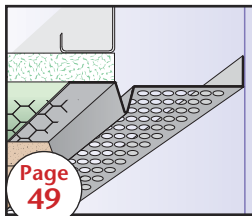
Page 48

A-C:
Custom Clips



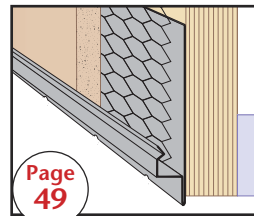
Page 48

ANG:
Custom Angles



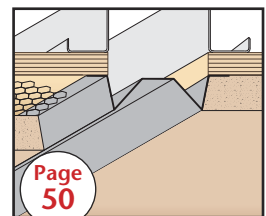
Page 49

AWF:
Attic Wing Fascia
(J-2)



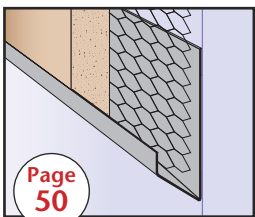
Page 49

BSS:
Blind Stop



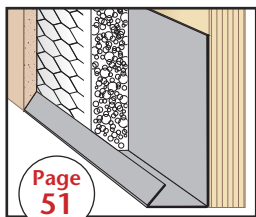
Page 50

C-G:
Chamfer Groove



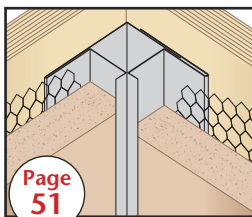
Page 50

CPB:
Casing Plaster
Bead



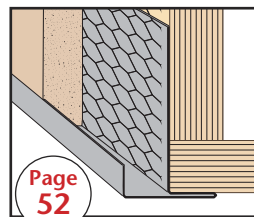
Page 51

CSB:
Casing Starter
Bead



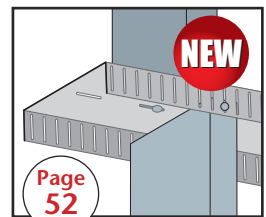
Page 51

CSJ:
Corner Slip
Joint - 2 Piece



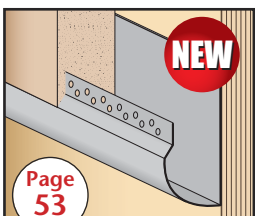
Page 52

CTM:
Corner Transition
Mold



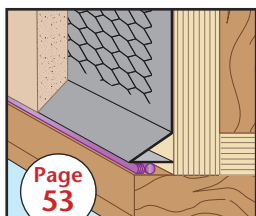
Page 52

D-T:
Drift Track



Page 53

DBB: Drywall
Bullnose Bead



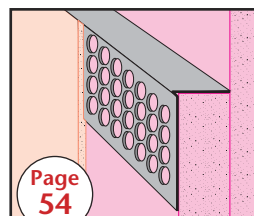
Page 53

DHF:
Drip Head Flashing (#6)



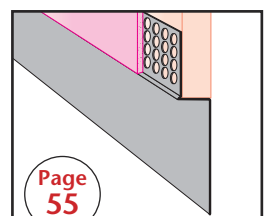
Page 54

DLT:
Deep Leg Track



Page 54

DTE: Drywall
Termination Edge



Page 55

DTR: Drywall
Termination Reveal