



## OCSF34: 3/4 One-Coat Short Flange

- Available in Galvanized or Stainless Steel

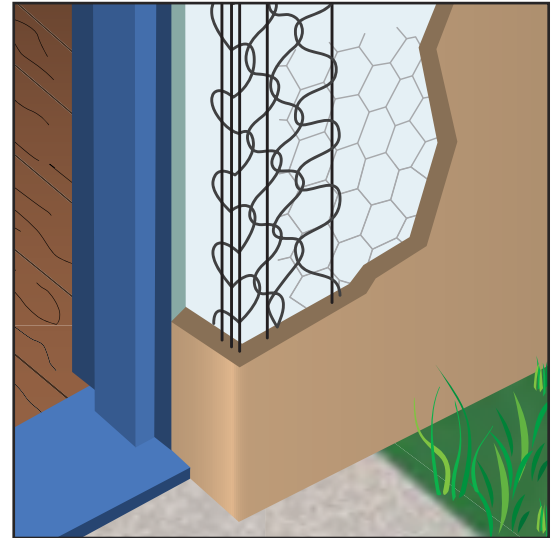
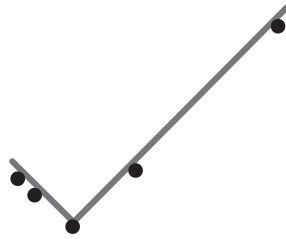
This multi-purpose piece is used for both exterior insulation "Hard Coat" and "One-Coat" systems. It is especially useful around doors, windows, and as a "Return" or "Stop". Length of flange is 3/4" flange with longer 3" back flange.

### Per Carton

**Total Feet:** 400'

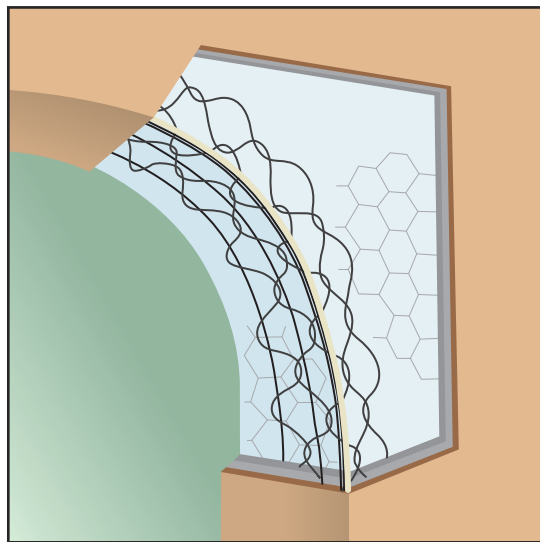
**Pieces:** 40

**Length:** 10'



### Most Common Part Numbers:

- 100CSF34** One-Coat Short Flange: 3/4", GS, 10'
- 10SSOCSF34** One-Coat Short Flange: 3/4", SS, 10'



## PNAB: Plastic Nose Archhead

- Available in Galvanized or Stainless Steel

This product combines the features of ArchAid® and a non-rust, high impact PVC nose. To be used on interior or exterior arches. Plastic Nose Archhead is especially desirable in high humidity and salt air climates. It has standard 2 3/8" legs. Available in stainless steel to be used with absolute confidence in corrosive environments. Designed so that they may be curved during installation when encountering curved conditions. Recommended for use with acrylic finishes.

### Per Carton

**Total Feet:** 200'

**Pieces:** 20

**Length:** 10'



### Most Common Part Numbers:

- 10PNAB** Plastic Nose Archhead: GS, 10'
- 10SSPNAB** Plastic Nose Archhead: SS, 10'