



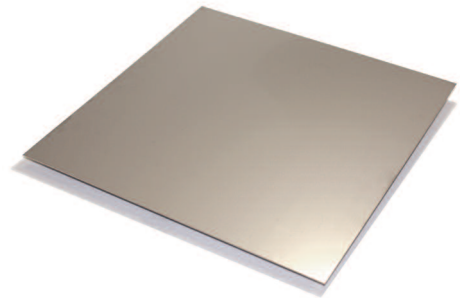
# Stainless Steel Finishes

## For Metal Products

We offer products in 304 (available in three finishes: #2B, #4 and #8) and 316 stainless sheet products.

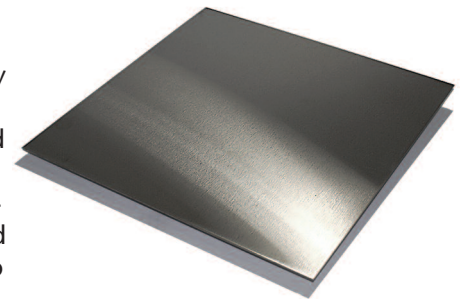
**No. 2B Finish** (Standard dull) is a bright cold rolled finish commonly produced in the same manner as No. 2D, except that the final light cold rolling pass is done using polished rolls. This produces a more reflective finish that resembles a cloudy mirror. Finish reflectivity can vary from manufacturer-to-manufacturer and coil-to-coil with some coils looking quite mirror-like and others being fairly dull. No. 2B is a general purpose cold rolled finish commonly used for all but exceptionally difficult deep drawing applications. It is more readily polished to high luster than a No. 1 or No. 2D finish.

**Sample Applications:** Bakeware, Chemical plant equipment, Dye house equipment, Flatware, Laundry and dry cleaning, Paper mill equipment, Pharmaceutical equipment, Plumbing fixtures, Refrigeration, Sewage treatment, Sheet metal products, Small tanks, Solar collector panels, Vacuum drum dryers, Waste fuel pool liners, Wheel covers



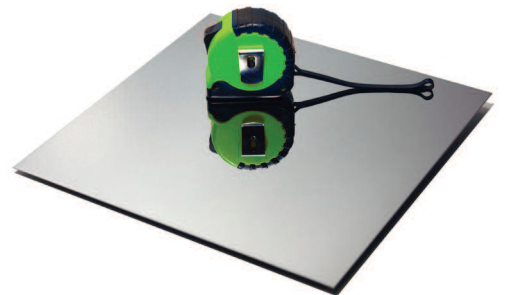
**No. 4 Finish** (Brushed Finish) is characterized by short, parallel polishing lines, which extend uniformly along the length of the coil. It is obtained by mechanically polishing a No. 3 finish with gradually finer abrasives. Depending on the requirements of the application, the final finish can be anywhere between 120 and 320 grit. Higher grit numbers produce finer polishing lines and more reflective finishes. The surface roughness is typically Ra 25 micro-inches or less. This general-purpose finish is widely used for restaurant and kitchen equipment, storefronts and food processing and dairy equipment. If a fabricator needs to blend in welds or do other refinishing, the resulting polishing lines are usually longer than on product polished by a producer or toll-polishing house.

**Sample Applications:** Appliances, Architectural wall panels, Beverage equipment, Boat fittings, Bus shelters, Clean rooms, Column covers, Dairy equipment, Elevator doors and interiors, Escalator trim, Food processing equipment, Furniture, Highway tank trailers, Hospital surfaces and equipment, Instrument or control panels, Kitchen equipment, Luggage handling equipment, Mass transit equipment, Restaurant equipment, Sinks, Sterilizers, Storefronts, Water fountains



**No. 8 Finish** (Mirror Finish) is the most reflective polished finish that is covered by the ASTM standards. It is produced in the same manner as the No. 7 finish except that the buffing is continued for an additional five to ten minutes. In comparison to a No. 7 finish, the grit lines are much less visible, but they can be seen if the finish is examined closely. The resulting finish is mirror-like but not a perfect mirror.

**Sample Applications:** Clean rooms, Column covers, Mirrors, Ornamental trim, Press plates, Reflectors, Signage, Wall panels



Reference information from *The Specialty Steel Industry of North America (SSINA)*. [www.ssina.com](http://www.ssina.com)