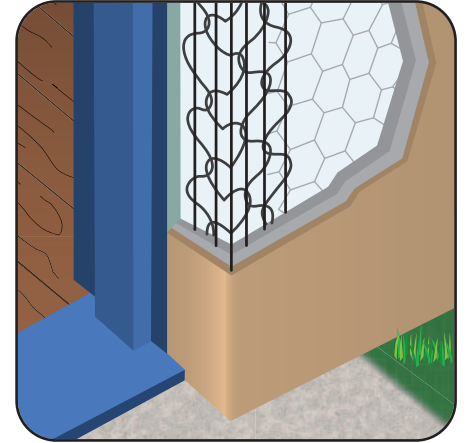
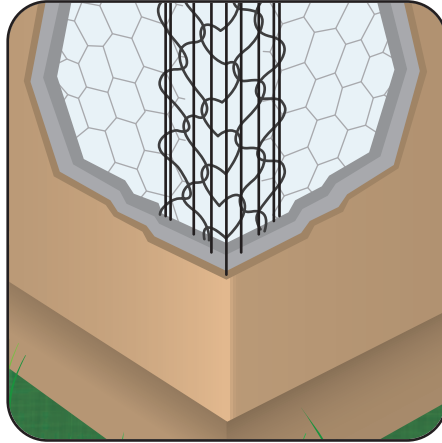




CUSTOM LENGTHS AVAILABLE!

Stockton Custom Fabrication
877-786-2587
custom@StocktonProducts.com



SAIL: StockAid® II

• Available in Galvanized or Stainless Steel
DoubleWire has an additional line wire on the outside edges to provide additional nail points. Three nose wire lower cost product used for exterior corner reinforcing with conventional 3-coat 7/8" stucco. Available in stainless steel to be used with absolute confidence in high humidity and salt air environments. Nominally 2 3/8" legs.

Most Common Part Numbers

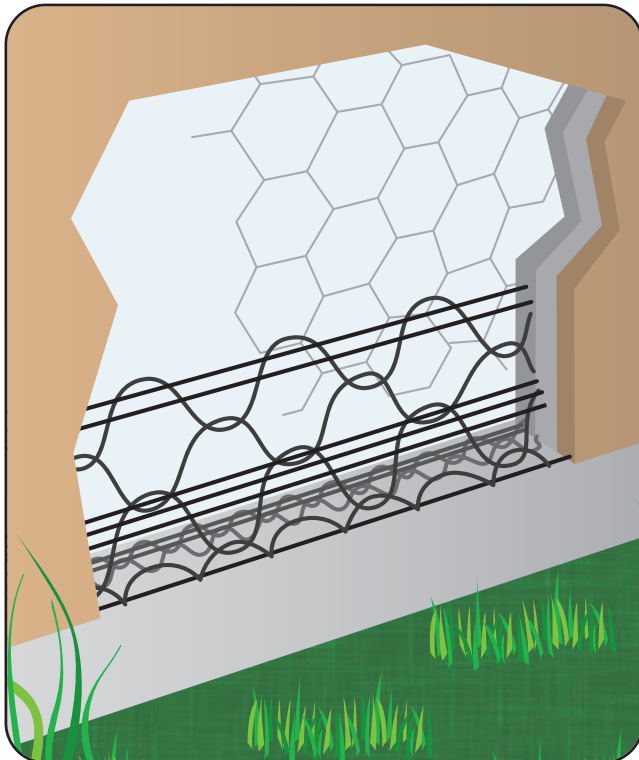
SAIL10	SAIL: GS, 10'
SAIL10SS	SAIL: SS, 10'

SF: Short Flange

• Available in Galvanized or Stainless Steel
Shaped for exterior or interior corners on doors, windows and panel systems where a short flange or stop is needed. It offers one nominally 2 3/8" leg and one short 1 1/2" leg. Available in stainless steel to be used with absolute confidence in high humidity and salt air environments.

Most Common Part Numbers

SF10	SF: GS, 10'
SF10SS	SF: SS, 10'



WA: WeepAid®

• Available In 7/8" and 1 1/2" Flange
• Available in Galvanized or Stainless Steel
Designed to act as a foundation screed for conventional 3-coat 7/8" stucco, WeepAid® maximizes the weep area and reduces the opportunity for stucco to stain or crack. Allows any moisture that gets behind the stucco to drain. Easy to tailor and trim. Can be used to form pop-outs around windows and doors as well as other "Ginger-Bread" details.

Most Common Part Numbers

WA7810	WeepAid®: 7/8", GS, 10'
WA11210	WeepAid®: 1 1/2", GS, 10'
WA7810SS	WeepAid®: 7/8", SS, 10'
WA11210SS	WeepAid®: 1 1/2", SS, 10'