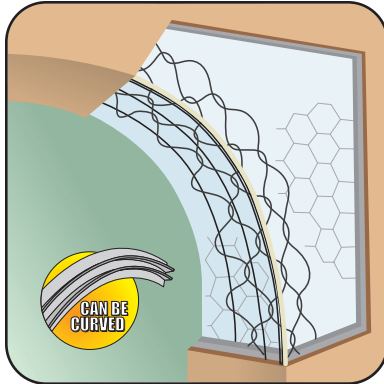




**PNAB:
Plastic Nose
Archbead**



- Available in Galvanized or Stainless Steel

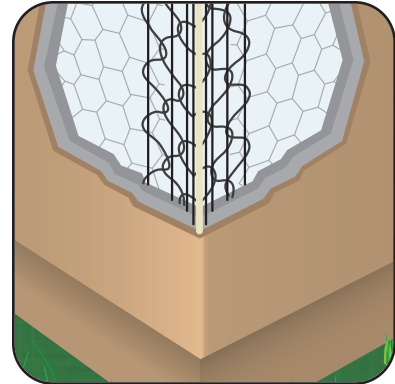
This product combines the features of ArchAid® and a non-rust, high impact PVC nose. To be used on interior or exterior arches. Plastic Nose Archbead is especially desirable in high humidity and salt air climates. It has nominally 2 3/8" legs. Available in stainless steel to be used with absolute confidence in corrosive environments. Designed so that they may be curved during installation when encountering curved conditions. Recommended for use with acrylic finishes.

Most Common Part Numbers

PNAB10	PNAB: GS, 10'
PNAB10SS	PNAB: SS, 10'



**PNCB:
Plastic Nose
Cornerbead**



- Plastic Nose CornerAid®
- Available in Galvanized or Stainless Steel

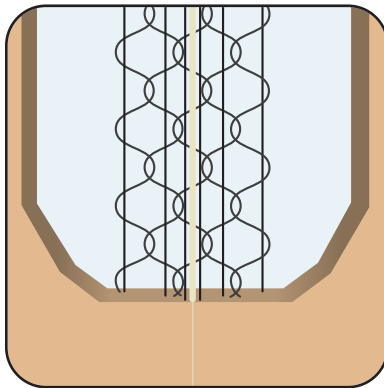
This is the premium five nose wire CornerAid® with a high impact, non-rusting plastic nose and is excellent for heavy rain, high humidity and salt air climates. It is also useful to the fireproofing industry for boxed and contoured "I" beams. Nominally 2 3/8" legs. Available in stainless steel to be used with absolute confidence in corrosive environments. Recommended for use with acrylic finishes. Extra nose wires provide increased structural rigidity.

Most Common Part Numbers

PNCB10	PNCB: GS, 10'
PNCB10SS	PNCB: SS, 10'



**PNDS:
Plastic Nose
Depth Screenshot**



- Available In 3/4" and 1" Grounds
- Available in Galvanized or Stainless Steel

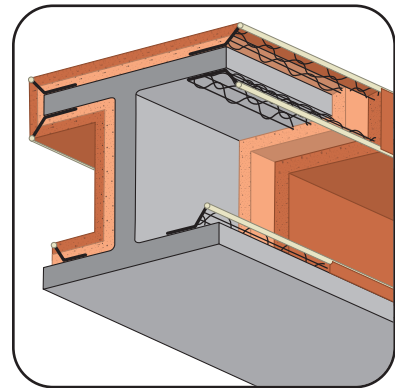
Assists in controlling stucco or concrete depth and can act as a control joint inhibiting cracking. Also used in fireproofing applications. Recommended for use with acrylic finishes.

Most Common Part Numbers

PNDS3410	PNDS: 3/4" Ground, GS, 10'
PNDS110	PNDS: 1" Ground, GS, 10'
PNDS3410SS	PNDS: 3/4" Ground, SS, 10'
PNDS110SS	PNDS: 1" Ground, SS, 10'



**PNFFA:
FormAid™
Plastic Nose
Fireproofing**



- Available in Galvanized wire
- Patent Pending

Stockton Products™ is pleased to introduce FormAid™, a new Patent Pending special version of our standard welded wire Plastic Nose WeepAid® product to be used in the fireproofing process. Designed specifically to aid in forming a contour design when fireproofing beams, columns or other steel members. FormAid's unique design and shape can also be adjusted in the field to achieve any angle desired, eliminating much of the need for costly wood forms, saving money, material, time and labor in the forming process.

Note: Product shipped flat.

Most Common Part Numbers

PNFFA10	FormAid™: GS, 10'
----------------	-------------------