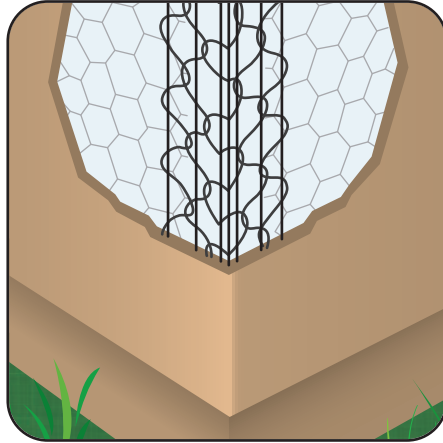




CUSTOM LENGTHS AVAILABLE!

Stockton Custom Fabrication
877-786-2587
custom@StocktonProducts.com



OC: One-Coat

• Available in Galvanized or Stainless Steel
Patterned after CornerAid® but with a tight fit on the corner. It is to be used over an insulated foam board system for 1/4" to 3/8" EIFS and One Coat stucco. It has nominally 2 3/8" legs. Available in stainless steel to be used with absolute confidence in high humidity and salt air environments.

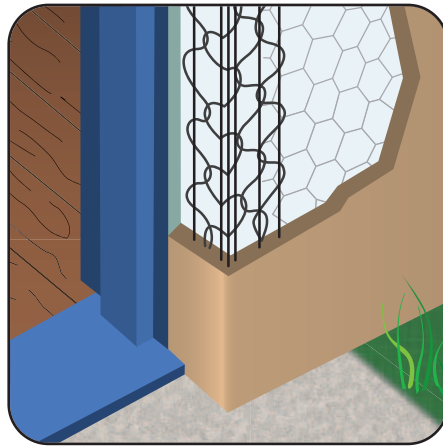
Most Common Part Numbers	
OC10	OC: GS, 10'
OC10SS	OC: SS, 10'



**SUPPORT FOR
DRAINAGE MAT
FROM TOP
TO BOTTOM**

**The Tru-Weep™ Full System
of Drainage Mat
Stucco Accessories
You Can Maximize The
Performance of Your Project!**

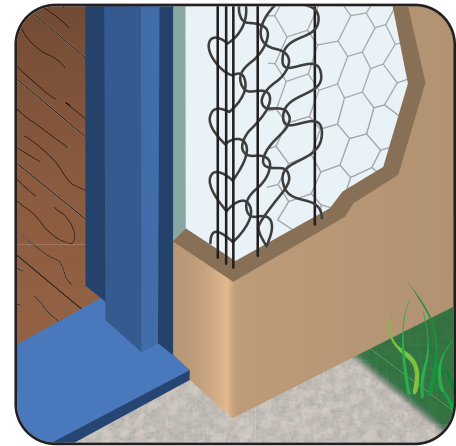
TRU-WEEP™



OCSF: One-Coat Short Flange

• Available in Galvanized or Stainless Steel
This multi-purpose piece is used for both exterior insulation "Hard Coat" and "One-Coat" systems. It is especially useful around doors, windows and as a "Return" or "Stop". Length of flange is 1 1/4".

Most Common Part Numbers	
OCSF10	OCSF: 1 1/4", GS, 10'
OCSF10SS	OCSF: 1 1/4", SS, 10'



OCSF34: 3/4 One-Coat Short Flange

• Available in Galvanized or Stainless Steel
This multi-purpose piece is used for both exterior insulation "Hard Coat" and "One-Coat" systems. It is especially useful around doors, windows, and as a "Return" or "Stop". Length of flange is 3/4" flange with longer 3" back flange.

Most Common Part Numbers	
OCSF3410	OCSF34: 3/4", GS, 10'
OCSF3410SS	OCSF34: 3/4", SS, 10'