



CUSTOM LENGTHS AVAILABLE!

Stockton Custom Fabrication
877-786-2587
custom@StocktonProducts.com



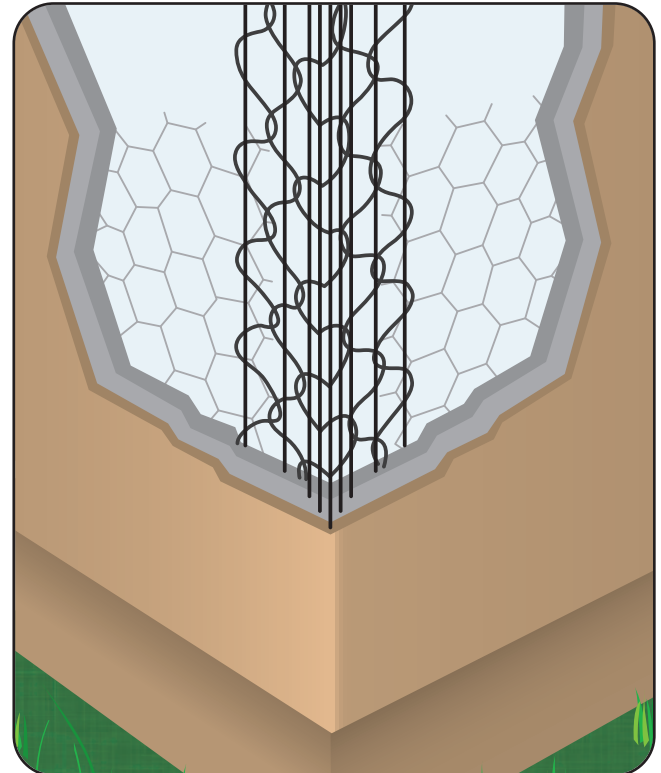
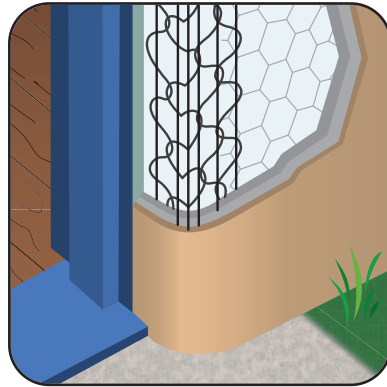
PRODUCTS™



BNSF: BullNose Short Flange

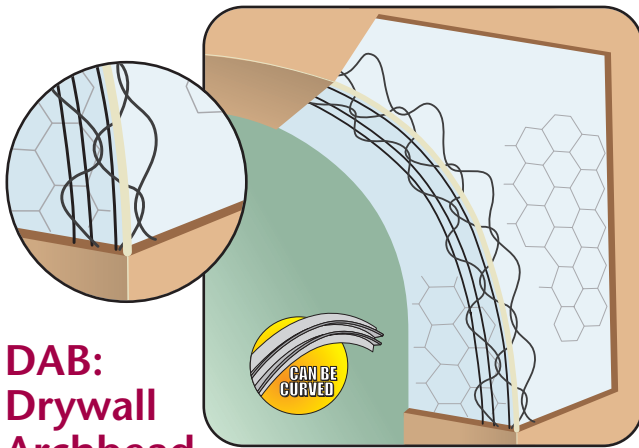
- Available In 7/16" and 7/8" Radius
- Available in Galvanized or Stainless Steel

This product combines the features of regular Bullnose and Short-Flange. It is used with Spanish or Mediterranean architecture for rounded corners, sills and ledges. It has a nominally 2 3/8" leg and a 1 1/2" leg and comes in both a 7/16" radius (ping pong ball size) and 7/8" radius (tennis ball size). Extra nose wire offers increased rigidity and stability.



Most Common Part Numbers

BNSF71610	BNSF: 7/16" Bullnose, GS, 10'
BNSF7810	BNSF: 7/8" Bullnose, GS, 10'
BNSF71610SS	BNSF: 7/16" Bullnose, SS, 10'
BNSF7810SS	BNSF: 7/8" Bullnose, SS, 10'



DAB: Drywall Archbead

- Available in Galvanized or Stainless Steel
- Stockton Products' Drywall Archbead is designed for the tough job of drywall or veneer plaster arches. The high impact PVC bead helps to form a smooth, slightly rounded corner which is extremely durable in high traffic areas. The short 1 1/2" legs are easily covered. Recommended for use with acrylic finishes.

Most Common Part Numbers

DAB10	DAB: GS, 10'
DAB10SS	DAB: SS, 10'



Stockton Products was the inventor of, and is the only manufacturer of, CornerAid® - the leading wire corner in the world.

CA: CornerAid®

- Available in Galvanized or Stainless Steel
- The premier product used for exterior corner reinforcing with conventional 3-coat 7/8" stucco. It features a five nose wire configuration that develops a strong, mechanical bond and a solid plaster corner. Full nine-wire construction yields a rigid straight corner. Available in stainless steel to be used with absolute confidence in high humidity and salt air environments. Extra nose wires provide increased structural rigidity.

Most Common Part Numbers

CA10	CA: GS, 10'
CA10SS	CA: SS, 10'