

## Stockton Custom Fabrication

Stockton Products® Has Made Some Exciting Changes In Our Livermore, Orange and Phoenix Facilities.

In order to expand our metal forming capabilities, we have made a significant investment in state-of-the-art equipment and experienced personnel to accomplish this goal.

Established as "Stockton Custom Fabrication", this new division will permit us to greatly expand our product line and market reach and give us the ability to offer all types of custom fabricated metal items as well as expand our current line of stock metal items through innovation and cost saving economies.

## Automated Sheet Metal Fabrication

Stockton Products can support any sheet metal projects with our state of the art metal fabrication facilities. Stockton Products® has invested in the latest tech to support growing demands and evolving business. Our capabilities include 2D fiber laser cutting, high speed punching and precision metal forming equipment. Our equipment is equipped with automated loading and unloading, CNC 6 axis back gauges and CNC controlled laser and turret punching technology. Stockton Products is set up for prototyping, medium to large scale production operations to satisfy all customer expectations.

## Software

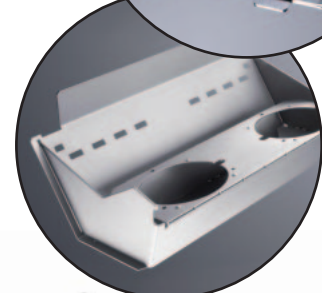
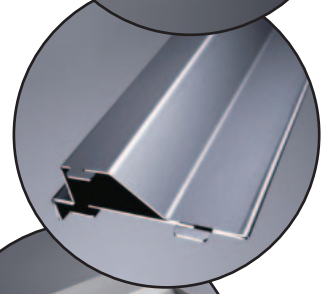
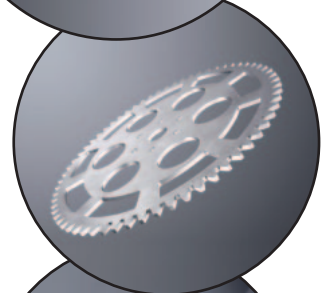
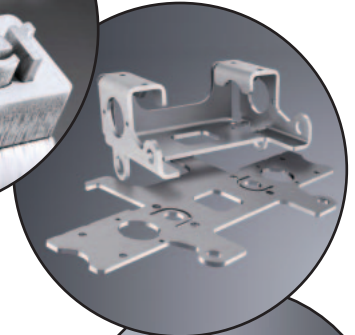
Our software allows for our design team to create your design and bring it to reality through 3D modeling and programming.

## Roll Forming

Our highly skilled roll forming department has a lot to offer our customers. Our ability to produce product at a high rate and maintain precise tolerances has always been a goal of Stockton Products®. We roll form thousands of parts and stock our five locations (North Las Vegas, NV • Burbank, CA • Livermore, CA • Orange, CA • Phoenix, AZ) to satisfy our customers' expectations and reduce lead times.

## TruLaser 3040

TruLaser 3040 fiber cuts extremely quick with high edge quality this solid-state laser enables the processing of non-ferrous metals and provides productivity benefit in thick and thin sheets. The 80" x 160" bed allows for processing of large parts. This machine is also equipped with automation for lights out operations.



## Equipment List

- Trumpf TruArc Weld 1000
- Trumpf TruLaser 3040 Fiber Laser
- Trumpf TruMatic Punch 2020
- Trumpf TruBend 5170
- Trumpf TruBend 7036
- Trumpf TruTops Boost Software
- Komatsu 20 Ton Punch Press
- Dahlstrom Rollformer
- Yoder Rollformer
- Cidan Fx30 Folder
- Ras Turbobend Folder
- Ras Shear
- Haco .25 X 12 Shear
- Lincoln Power Mig Welder
- Tommy Industrial 55 Ton

