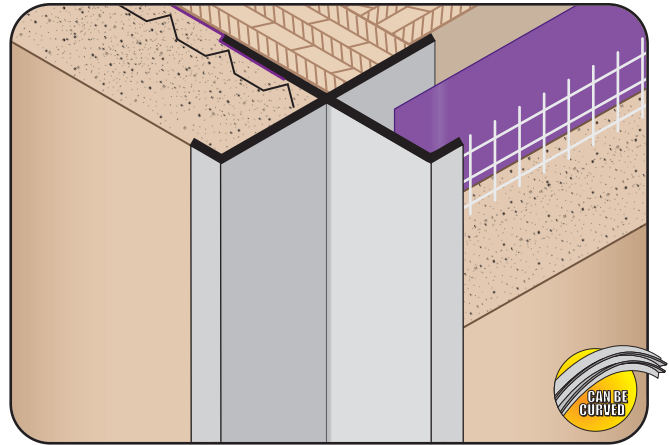
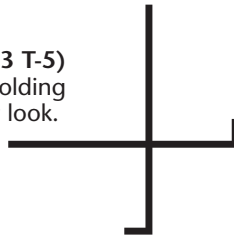


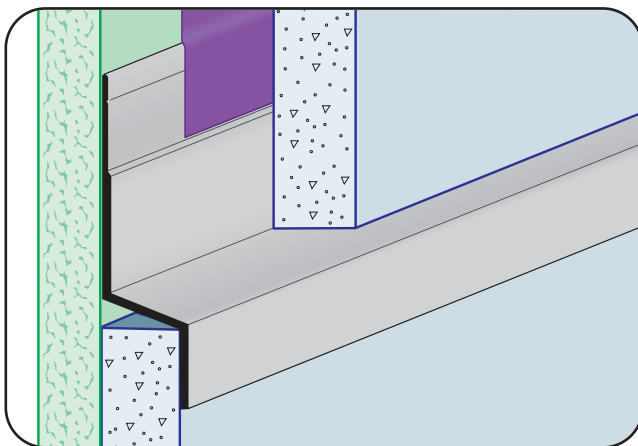
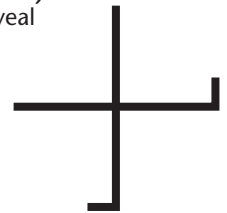
XDM: X Drywall Corner Molding

- Available Curved Upon Request
 - Available in Aluminum Alloy (6063 T-5)
- A drywall version of the "X" corner molding that creates a unique "inverse" corner look.



XPM: X Plaster Molding

- Available Curved Upon Request
 - Available in Aluminum Alloy (6063 T-5)
- Creates a decorative inverted corner reveal detail for conventional 3-coat stucco at fascia/soffit conditions and around recessed entryways and doors. Can also be used to trim off the tops of pony walls and used as a drip edge on a fascia/soffit condition.



ZT-FCP: Z Trim for FCP

- Available in Aluminum Alloy (6063 T-5)
- A decorative reveal that creates a weep point that allows moisture to weep out and away from the fiber cement panels.
- Note:** Attach panel per manufacturer's recommended installation instructions.



TRUFLUSH™

Stockton Products® announces the release of its patent pending TruFlush™ drywall backing, an innovative product designed to support wall mounted rails, grab bars, and wall mounted equipment and devices. As an alternative to notch track and flat strap, TruFlush™ backing installs 50% faster with fasteners on the inside of the metal studs and more importantly, acts as an insurance policy to install drywall correctly the first time avoiding back charges for popped fasteners and refloating finished drywall.

