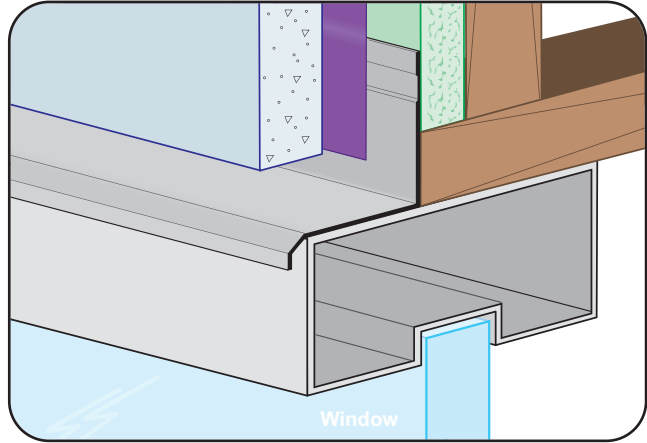
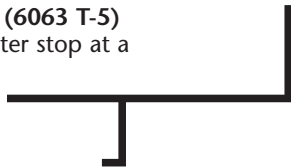


**VSMV:**  
**Vented Soffit Molding - 16V80**

- Available With 1/8" x 1" Vent Slots or No Vents
- Available Curved Upon Request
- Available in Aluminum Alloy (6063 T-5)

Creates a vented reveal and plaster stop at a wall/ceiling condition.

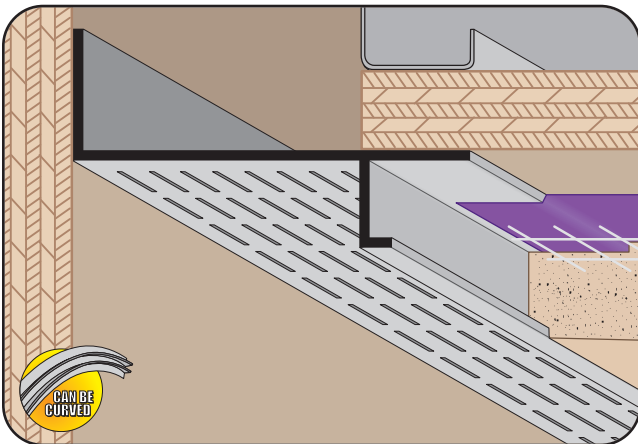
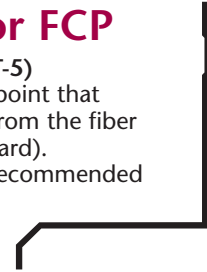
**Note:** Available non-vented on special order.



**WHD-FCP:**  
**Window Head Drip for FCP**

- Available in Aluminum Alloy (6063 T-5)
- A decorative reveal that creates a weep point that allows moisture to weep out and away from the fiber cement panels (also known as hardie board).

**Note:** Attach panel per manufacturer's recommended installation instructions.

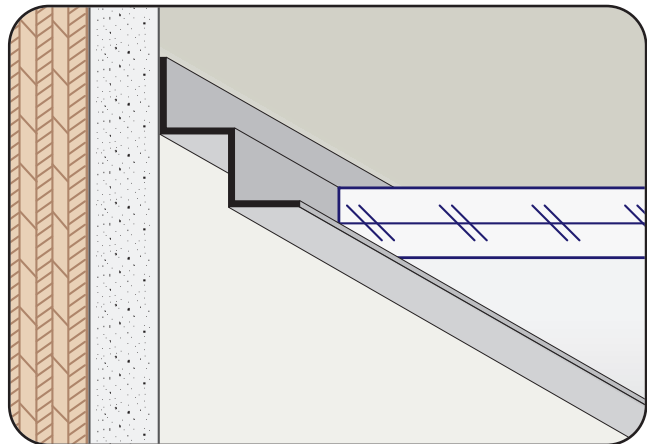
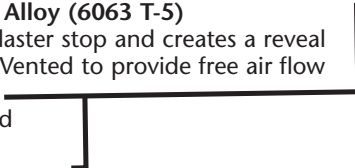


**WPM:**  
**Plaster Soffit Reveal Molding**

- With 1/8" x 1" Vent Slots
- Available Curved Upon Request
- Available in Aluminum Alloy (6063 T-5)

A screed that provides a plaster stop and creates a reveal at ceiling/wall conditions. Vented to provide free air flow at the perimeter.

**Note:** Available non-vented by special order.



**WRM: W Reveal Molding**

- Available With Vents or No Vents
- Available in Aluminum Alloy (6063 T-5)

W style molding that creates a reveal at a wall and suspended/acoustical ceiling condition.

