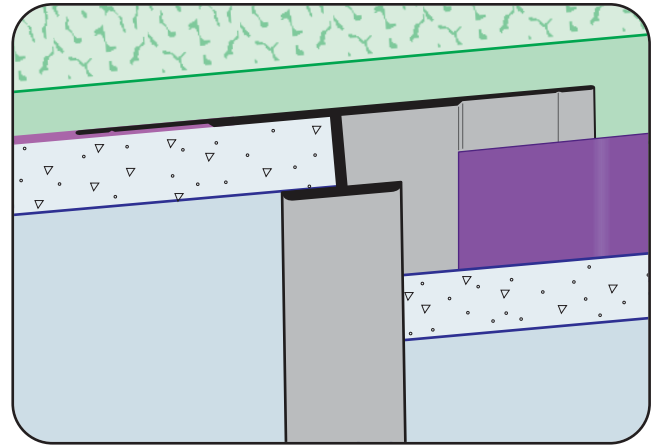


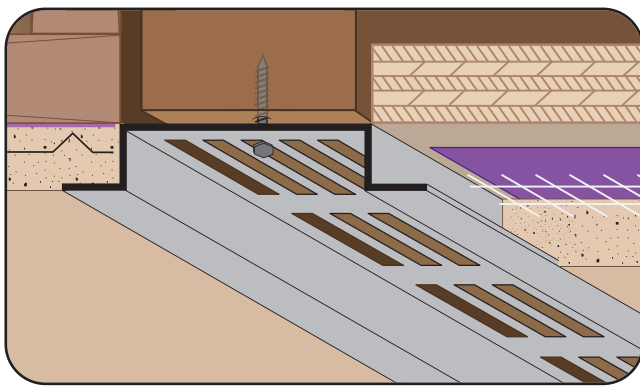
### PCS DA: Plaster Channel Screed DA

- Available With 1/8" x 1" Vent Slots or No Vents
  - Available With 1/8" Weep Holes Slots or No Weep Holes
  - Available Curved Upon Request
  - Available in Aluminum Alloy (6063 T-5)
- A decorative reveal used as a plaster stop/control screed for direct applied and one coat systems.



### PJ-FCP: Panel Joiner for FCP

- Available in Aluminum Alloy (6063 T-5)
- A functional trim piece used to join two panels together in a vertical condition.  
**Note:** Do not use in a horizontal condition. Attach panel per manufacturer's recommended installation instructions.



### RBSV: Removable Balcony Soffit Vent

- For New or Retrofit Construction
  - Available in Aluminum Alloy (6063 T-5)
- A removable soffit vent that permits access to the balcony soffit space for inspection at the balcony/wall transition and allows for free air movement and ventilation. Complies with the City of Berkley R1 and R2 Zoning Districts for Exterior Elevated Elements. The soffit vent is easily installed and removed. 1/2" wide return legs are provided that will cover the rough opening.

### POZ: Pozalite®

Pozalite® is a unique concrete/stucco enhancer that improves pumpability, strength and open-time of cementitious materials.

The use of Pozalite® means easier troweling, smoother pumping, greater productivity, better workmanship and faster clean-up.

**Note:** When used as designed, Pozalite® presents no safety or health hazards. As a precaution, wear respirator or dust mask to avoid inhalation of dust. Wet material may be very slippery.

**Note:** SDS available upon request.

