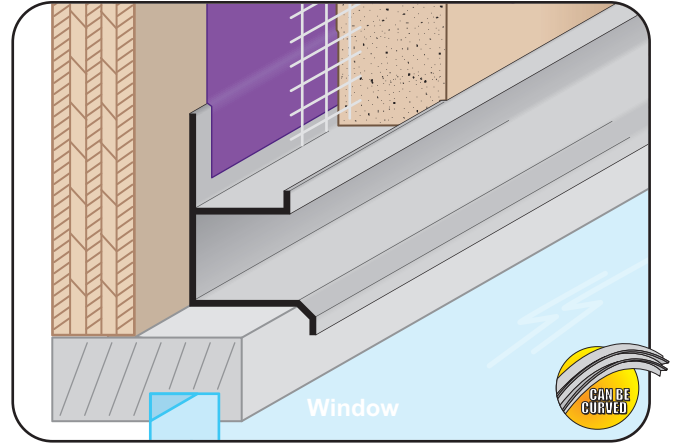


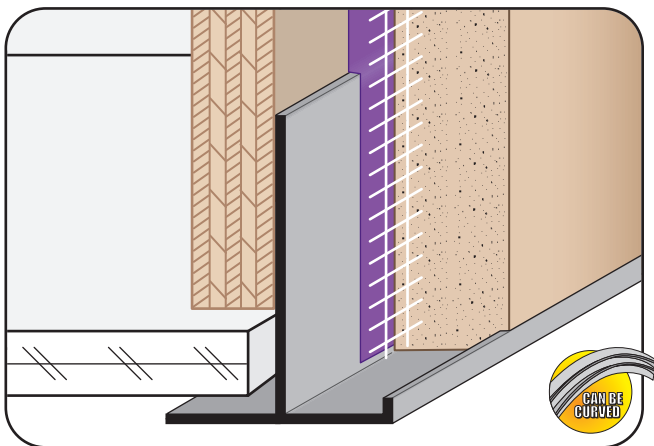
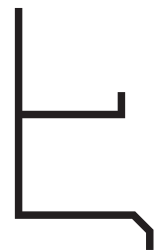
F MOLD-FCP: F Mold for FCP

- Available in Aluminum Alloy (6063 T-5)
- Creates a decorative reveal in a wall/soffit transition
- Note:** Attach panel per manufacturer's recommended installation instructions.



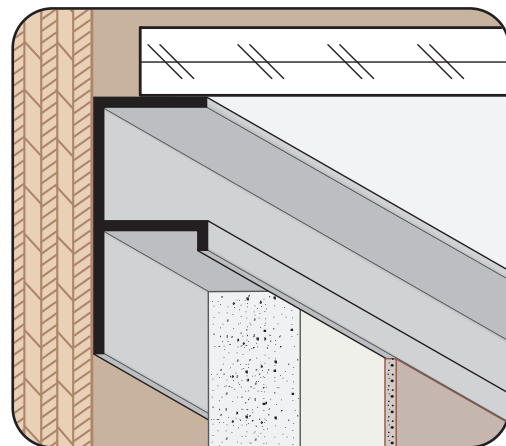
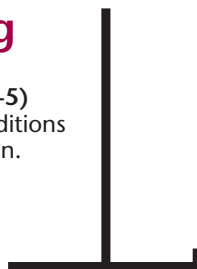
F-D 75-75: F Drip Molding

- Available With 1/8" Weep Holes or No Vents
 - Available Curved Upon Request
 - Available in Aluminum Alloy (6063 T-5)
- Provides a plaster stop/drip molding with an aesthetic reveal for window heads, tops of door frames and plate conditions where a drip edge is required.



FCM: Fascia Corner Molding

- Available Curved Upon Request
 - Available in Aluminum Alloy (6063 T-5)
- A plaster stop for fascia/soffit corner conditions that provides a reveal on the soffit portion.



FDM: F Drywall Molding

- Available With 1/8" x 1" Vent Slots or No Vents
 - Available With 1/8" Weep Holes or No Weep Holes
 - Available Curved Upon Request
 - Available in Aluminum Alloy (6063 T-5)
- A drywall stop/control screed for drywall, used at the top or base of columns, the top of walls at the ceiling, or at the base to create a reveal. Also used at the top of windows to permit the continuation of a horizontal reveal at the window line.
- Note:** Not available with a 1 1/2" Y size. Available on 1/2" reveal.

