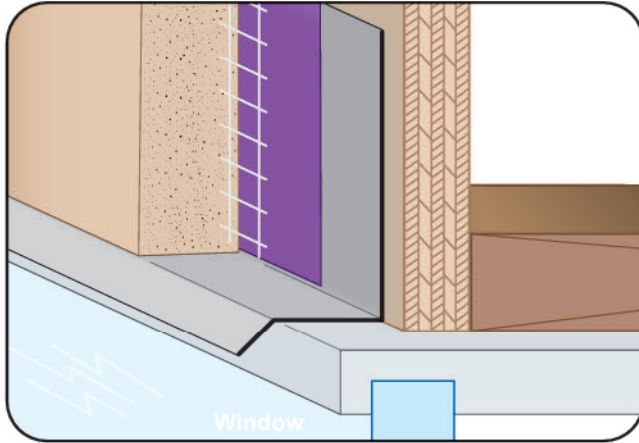




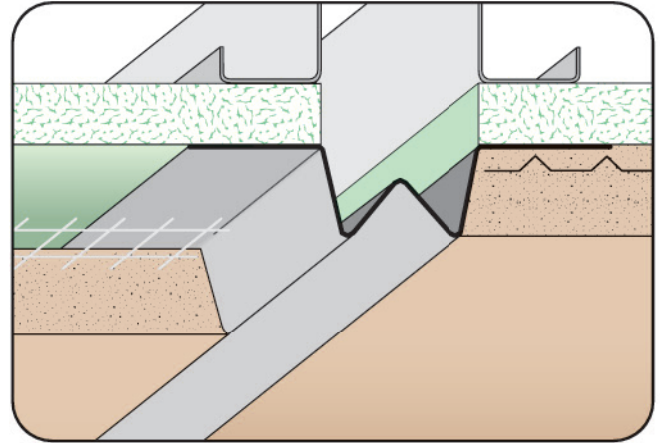
**CUSTOM SIZES AVAILABLE!**

Stockton Custom Fabrication  
877-786-2587  
custom@StocktonProducts.com



### WTP: Window Termination Point

- Available Curved Upon Request
  - Available in Aluminum, Copper, Galvanized Steel, Bonderized, Galvalume®, Stainless Steel or Zinc
- Provides a termination/drip edge above exterior door and window heads.



### WVS: Wide V Screed

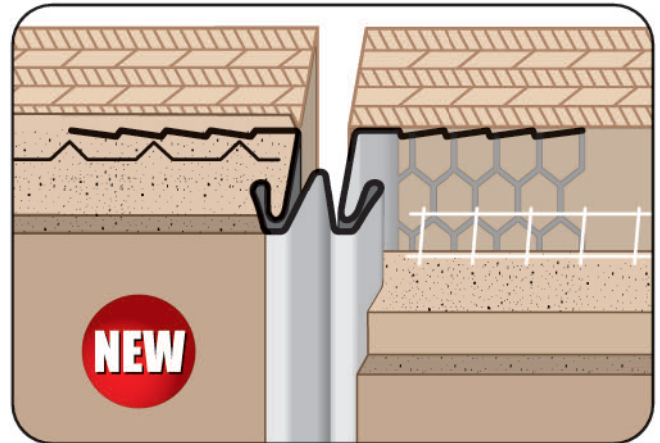
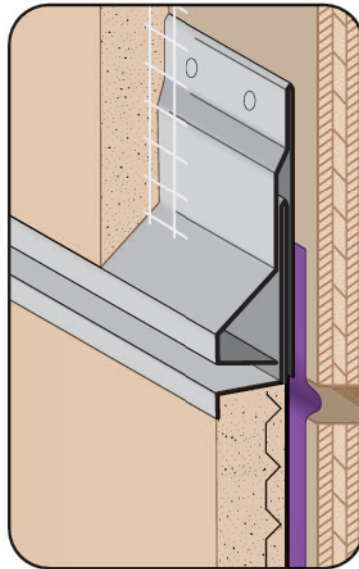
- Available Curved Upon Request
  - Available in Aluminum, Copper, Galvanized Steel, Bonderized, Galvalume®, Stainless Steel or Zinc
- A decorative plaster control joint for conditions that require a small or minimal reveal.



### WXJ: Water Management Expansion Joint (2 Piece)

- Superior Moisture Protection™
- Available With 1/4" Weep Holes or No Weep Holes
- Available in Aluminum, Copper, Galvanized Steel, Bonderized, Galvalume®, Stainless Steel or Zinc
- US Patent D850656

Similar to the M-Slide Expansion Joint® design, the WXJ is a two piece expansion joint that provides Superior Moisture Protection™ while offering movement at floor lines and other conditions requiring an expansion joint. Unique design provides a uniform look to the plaster return keys on both top and bottom legs when finished.



### XDJ: Double J Control Joint

- Features Expanded Metal Flanges
  - Includes Taped Reveal
  - Available in Galvanized Steel (GS) 26 ga. G60
- Double J Control Joint expanded flange are used to relieve stresses of expansion and contraction of minor thermal movement in plaster walls and ceilings. The Double J has a taped, 5/16" reveal and rolled outer edges to minimize visible separation cracking. This product has expanded flanges on both sides for proper keying of the scratch and brown coat.