



**CUSTOM SIZES AVAILABLE!**

Stockton Custom Fabrication  
877-786-2587  
custom@StocktonProducts.com

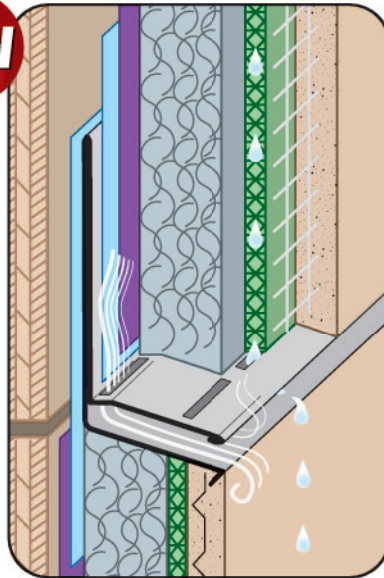


**PRODUCTS™**

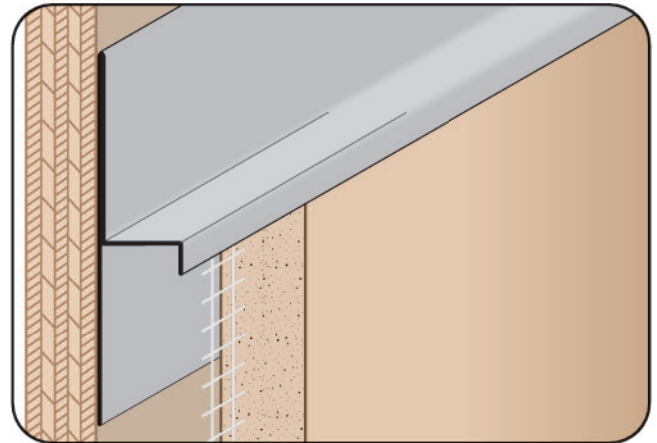
**NEW**

### TWHJ-CI: Tru-Weep™ #9 Horizontal Control Joint

- Complies With IBC 2021 Drainage Mat Requirement For Stucco Systems
- Included 3/16 x 2" Weep Slots
- Available in Aluminum, Copper, Galvanized Steel, Bonderized, Stainless Steel or Zinc



The Tru-Weep™ Stucco Accessories are a series of counter flashing stucco screeds specifically designed to be used with drainage mats and (CI) continuous insulation. Weep slots are located along the back of the sloped leg in alignment with the drainage mat to allow water to exit the stucco assembly efficiently.



### TWM: T Water-Resistant Molding

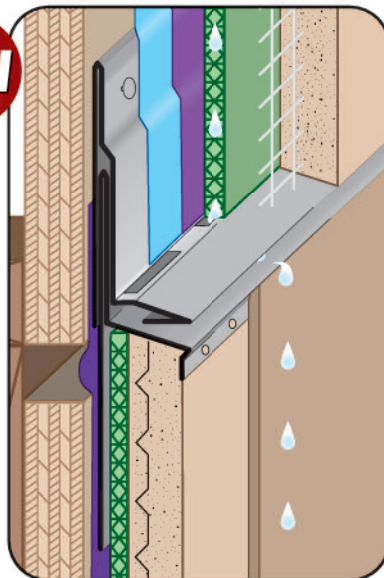
- SolidGround® Design For Moisture Protection
- Available in Aluminum, Copper, Galvanized Steel, Bonderized, Galvalume®, Stainless Steel or Zinc

One-piece SolidGround® design feature mitigates the concern of moisture penetration in a horizontal condition. Provides a plaster stop for top of wall/parapet conditions. SolidGround® design prevents moisture penetration at the top of the wall.

**NEW**

### TWMFR: Tru-Weep™ Finish Rite® M-Slide Expansion Joint®

- Included 3/16 x 2" Weep Slots
- Available in Aluminum, Copper, Galvanized Steel, Bonderized, Stainless Steel or Zinc
- US Patent 7,673,421 B2

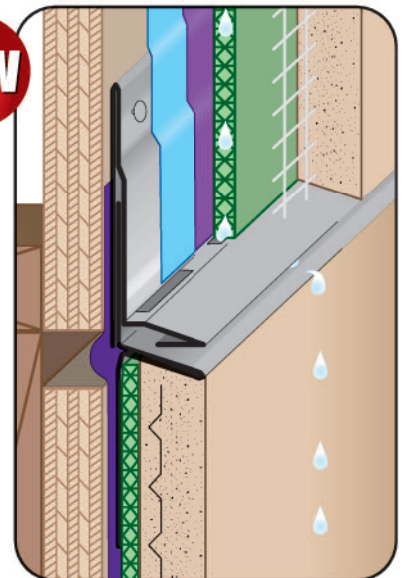


The Tru-Weep™ M-Slide Expansion Joint® accessory is specifically designed to be used with drainage mat. Weep slots are located along the back of the sloped leg in alignment with the drainage mat to allow water to efficiently exit the stucco assembly.

**NEW**

### TWMSC: Tru-Weep™ M-Slide Expansion Joint®

- Included 3/16 x 2" Weep Slots
- Available in Aluminum, Copper, Galvanized Steel, Bonderized, Stainless Steel or Zinc
- US Patent 7,673,421 B2



The Tru-Weep™ M-Slide Expansion Joint® accessory is specifically designed to be used with drainage mat. Weep slots are located along the back of the sloped leg in alignment with the drainage mat to allow water to efficiently exit the stucco assembly.