

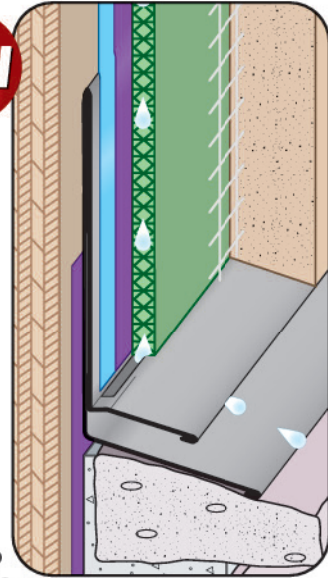
TVSS: Top Vent Stucco Screed

- Available in Aluminum, Copper, Galvanized Steel, Bonderized, Stainless Steel or Zinc
- Patent Pending

The Top Vent Stucco Screed is a single piece vented plaster stop specifically designed to be used with drainage mat to efficiently allow water vapor to escape through the concealed air slots.

The Top Vent Stucco Screed is fully customizable to be used with any ground size (stucco depth) or drainage mat thickness per IBC 2510.6.1

The Top Vent Stucco Screed is an ideal companion piece to use with Stockton's Tru-Weep™ line of stucco accessories.

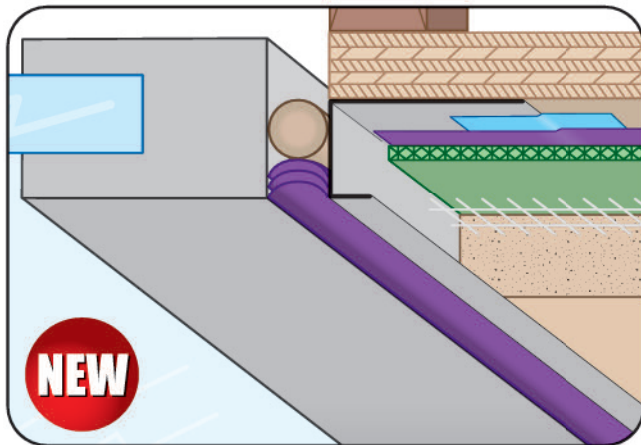


TWBF: Tru-Weep™ Base Flashing

- Included 3/16 x 2" Weep Slots
- Available in Aluminum, Copper, Galvanized Steel, Bonderized, Stainless Steel or Zinc

The Tru-Weep™ Weep Base Flashing is a single piece counter flashing stucco weep screed specifically designed to be used with drainage mat transition points between dissimilar claddings. Weep slots are located along the back of the sloped leg in alignment with the drainage mat to allow water to efficiently exit the stucco assembly.

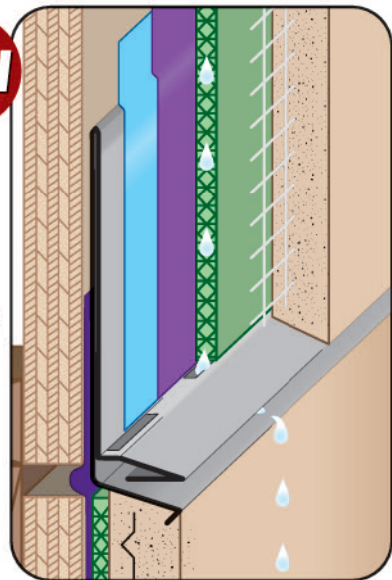
Tru-Weep™ Base Flashing is in compliance with 2021 IBC: 2510.6.1



TWCB: Tru-Weep™ Casing Bead

- Available in Aluminum, Copper, Galvanized Steel, Bonderized, Stainless Steel or Zinc

The Tru-Weep™ Casing Bead is a non-perforated customizable stucco casing bead. Whether the stucco assembly is utilizing a drainage mat, continuous insulation, or traditional 3-coat the Tru-Weep™ Casing Bead can be ordered in any ground size to accommodate the stucco assembly.



TWHJ: Tru-Weep™ #9 Horizontal Control Joint

- Included 3/16 x 2" Weep Slots
- Available in Aluminum, Copper, Galvanized Steel, Bonderized, Stainless Steel or Zinc

The Tru-Weep™ Horizontal Control Joint is a single piece horizontal control joint specifically designed to be used with drainage mat. Weep slots are located along the back of the sloped leg in alignment with the drainage mat to allow water to efficiently exit the stucco assembly.