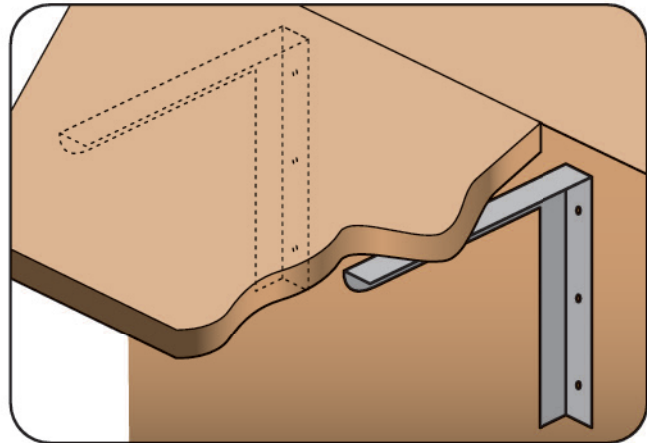


**PWC:  
Plaster Water-  
Resistant  
Channel**

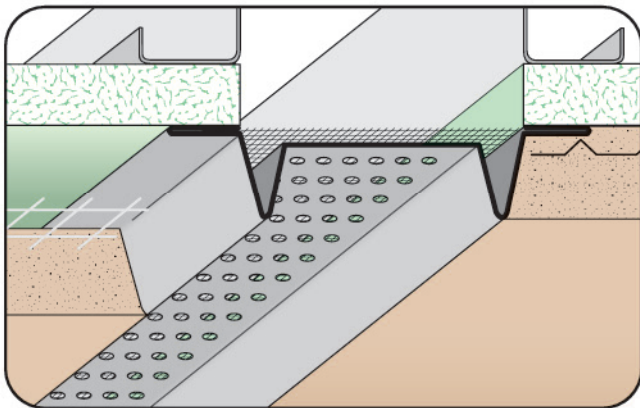
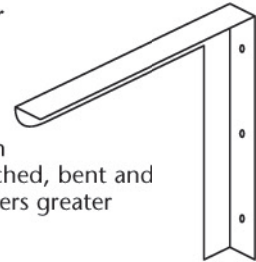
- SolidGround® Design For Moisture Protection
  - Available With 1/8" Weep Holes or No Holes
  - Available in Aluminum, Copper, Galvanized Steel, Bonderized, Galvalume®, Stainless Steel or Zinc
- One-piece SolidGround® design feature mitigates the concern of moisture penetration in a horizontal condition.



**S-B: Counter Support Bracket**

- Features A Radiuses Top Bar For Your Protection
- Available in 1/8", 3/16" or 1/4" Hot Rolled Steel (HR)

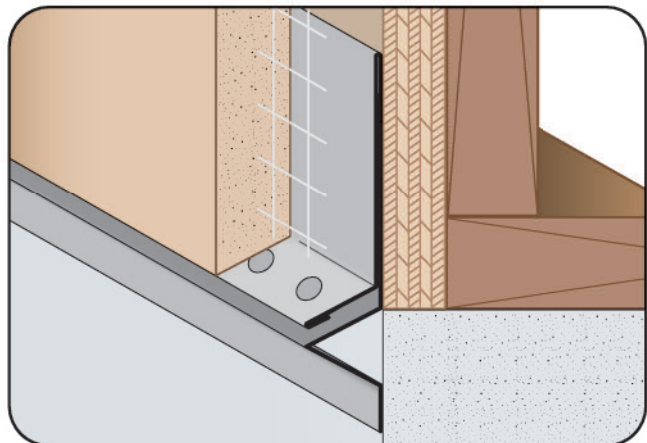
Our Counter Support Bracket are 90° support brackets are made from a single piece of material, then notched, bent and welded. The reinforced side wall offers greater support for your project.



**SBS: BugStop® Soffit Vent**

- Available with 1/8" and 1/4" Vent Holes
- Galvanized Steel Only
- US Patent 85,120,158

"Allows air in; keeps bugs out." All the same features and value of our standard SVR screed, but with the addition of 0.062, 16-16 (1/16") aluminum screen that protects against the entry of wasps, bees, termites and other pests.



**SBW: Santa Barbara  
Weep Screed™**

- Available With or Without 1/4" Weep Holes
- Available in Aluminum, Copper, Galvanized Steel, Bonderized, Galvalume®, Stainless Steel or Zinc

A unique one piece weep screed design that combines the features of a traditional foundation weep screed while providing an aesthetically pleasing look. The upper leg has a plaster stop with a 1/4" closed hem for safety and weep holes.

