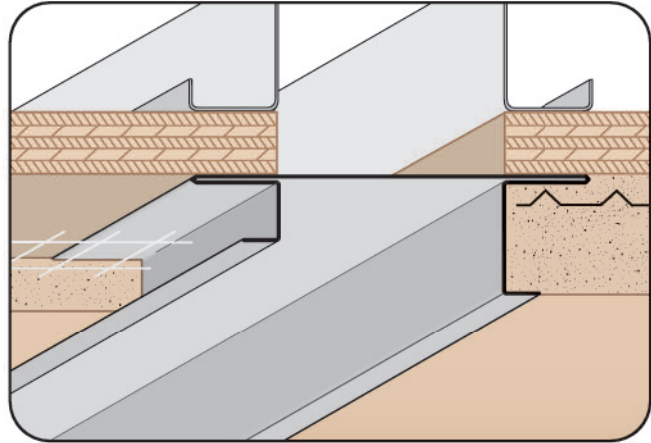


OES: Offset Expansion Screed (2 Piece)

- Available With 1/8", 1/4" Vent Holes or No Holes
- Available in Aluminum, Copper, Galvanized Steel, Bonderized, Galvalume®, Stainless Steel or Zinc

Adjustable version of our Offset Reveal Screed that permits movement in a double stud condition and at floor lines.

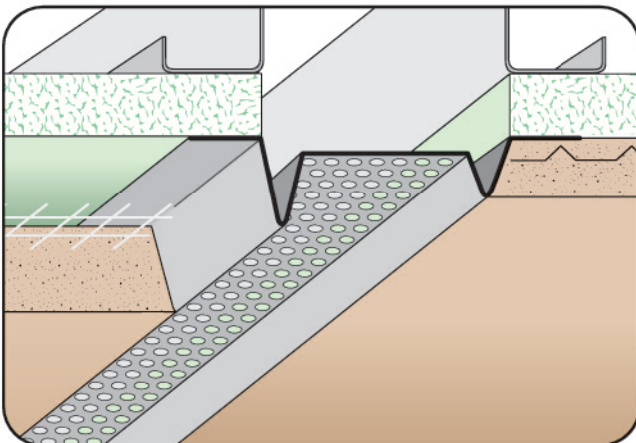
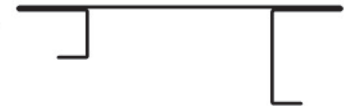
Available vented for air flow.



OPC: Offset Plaster Channel Screed

- Available With 1/8", 1/4" Vent Holes or No Holes
- Available Curved Upon Request
- Available in Aluminum, Copper, Galvanized Steel, Bonderized, Galvalume®, Stainless Steel or Zinc

A channel screed style reveal molding with return keys for screeding. Provides a longer leg on one side for dissimilar depths of materials, such as EIFS. Available with 1/8" weep holes.



OVS: Offset Vent/Reveal Screed

- Available With 1/8", 1/4" Vent Holes or No Holes
- Available Curved Upon Request
- Available in Aluminum, Copper, Galvanized Steel, Bonderized, Galvalume®, Stainless Steel or Zinc

A variation of our standard vent screed which provides a larger depth on one side to accommodate materials of dissimilar depths.



OWC: Offset Water-Resistant Expansion Channel (2 Piece)

- Superior™ Moisture Protection
- Available With 1/8" Weep Holes or No Holes
- SolidGround® Design For Moisture Protection
- Available in Aluminum, Copper, Galvanized Steel, Bonderized, Galvalume®, Stainless Steel or Zinc

The OWC is the same as the EWC except that it offers two leg lengths for situations where 2 dissimilar depths come together. Special "Step" on the attachment leg provides a locator for correct placement of the fasteners and helps keep the molding laying flat on the wall.

