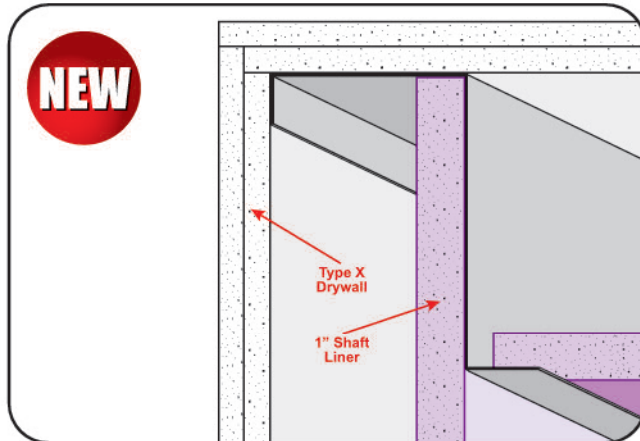




CUSTOM SIZES AVAILABLE!

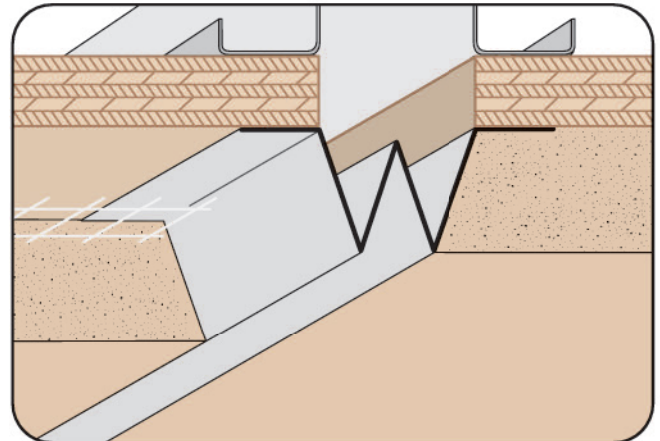
Stockton Custom Fabrication
877-786-2587
custom@StocktonProducts.com



JLC: JL Corner (Shaft Wall)

- Eliminates Multi-Piece Shaft Wall Corner Construction
- Eliminates Air Gaps In Shaft Wall Corners
- Provides Greater Structural Integrity For Corners
- Custom Lengths Available Up To 14' Long
- Available in 20ga, 18ga, and 16ga Galvanized Steel

Stockton Products JL Corner is single piece metal framing member designed for outside corners within shaft wall assemblies.



M-S: M Screed

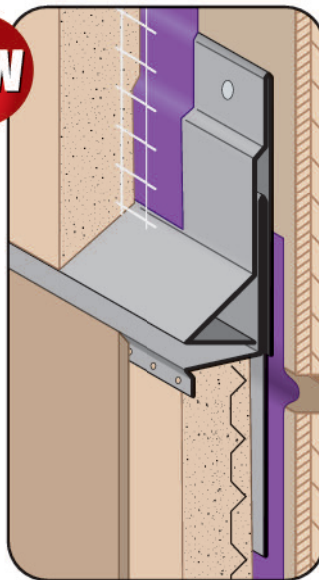
- Available in Aluminum, Copper, Galvanized Steel, Bonderized, Galvalume®, Stainless Steel or Zinc
- A versatile control joint used primarily to relieve cracking. Provides a decorative reveal.



MFR: Finish Rite® M-Slide Expansion Joint® (2 Piece)

- Superior Moisture Protection™
- Available With 1/4" or 1/2" Weep Holes or No Holes
- Available in Aluminum, Copper, Galvanized Steel, Bonderized, Galvalume®, Stainless Steel or Zinc
- US Patent 7,673,421 B2

The dual function self-aligning expansion joint provides movement capability at floor line while allowing moisture to release from the top ground and lock out moisture from the bottom. Special "Step" on the attachment leg provides a locator for correct placement of the fasteners and helps keep the molding laying flat on the wall. Provides 1" of vertical movement.



MSC: M-Slide Expansion Joint® (2 Piece)

- Does Not Have A Plaster Return Key
- Superior Moisture Protection™
- Available With 1/4" Weep Holes or No Holes
- Available in Aluminum, Copper, Galvanized Steel, Bonderized, Galvalume®, Stainless Steel or Zinc
- US Patent 7,673,421 B2

The self-aligning, dual function M-Slide expansion joint provides movement capability at the floor line while providing a water management system that will allow moisture to release from the top ground and lock out moisture from the bottom ground.

