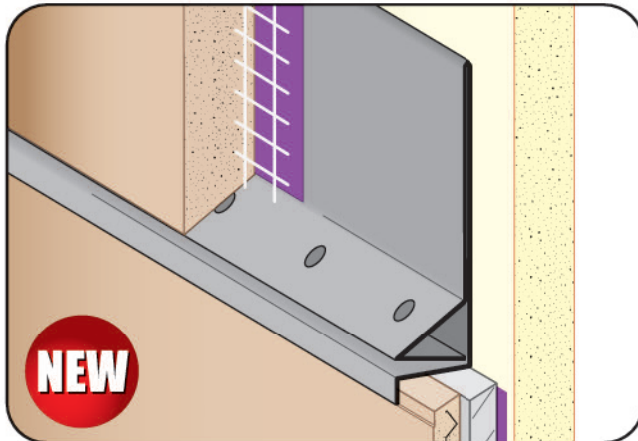




CUSTOM SIZES AVAILABLE!

Stockton Custom Fabrication
877-786-2587
custom@StocktonProducts.com

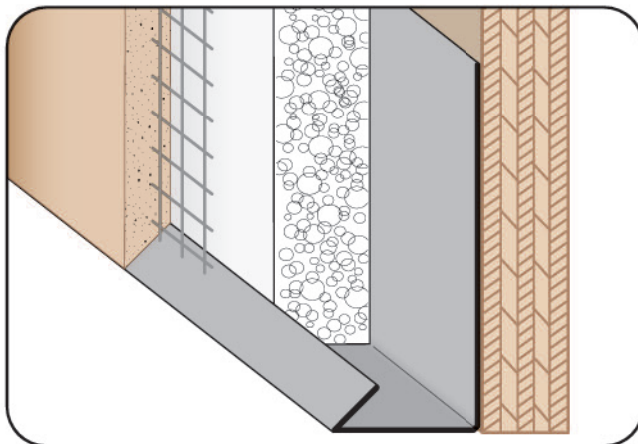


NEW

CICJ: #9 Control Joint

- Water Tested per ASTM E1105
- Superior™ Moisture Protection
- Available With 1/4" Weep Holes, No Holes or Curved Upon Request
- Available in Aluminum, Copper, Galvanized Steel, Bonderized, Galvalume®, Stainless Steel or Zinc
- US Patent 7,673,421

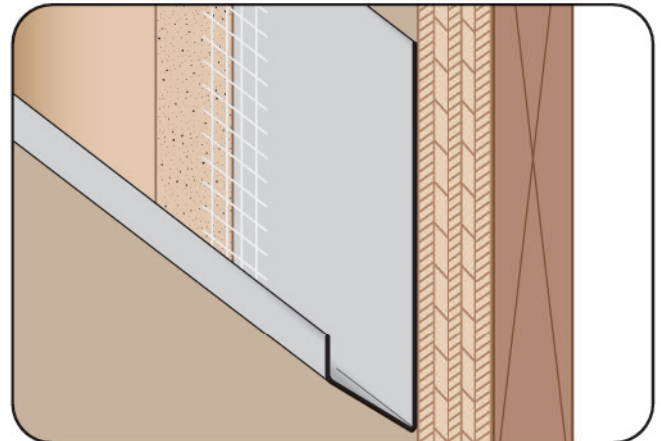
CICJ is a drainage point control joint for CI (continuous insulation) stucco assemblies. The ground points (X) can be customized to accommodate any combination of rigid insulation and stucco CI system. Available with or without weep holes.



CSB: Casing Starter Bead

- Superior™ Moisture Protection
- Available With 1/8", 1/2" Weep Holes or No Holes
- Available Curved Upon Request
- Available in Aluminum, Copper, Galvanized Steel, Bonderized, Galvalume®, Stainless Steel or Zinc

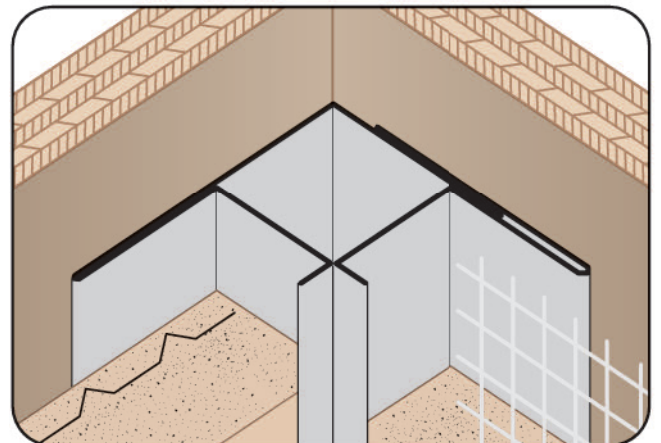
A stop used as a starting track for EIFS systems.



CPB: Casing Plaster Bead

- Superior™ Moisture Protection
- Available Curved Upon Request
- Available in Aluminum, Copper, Galvanized Steel, Bonderized, Galvalume®, Stainless Steel or Zinc

A plaster stop/casing bead used to terminate the stucco at the base of walls and/or where a plaster stop is required. Has a 60° angle which creates a unique look.



CSJ: Corner Slip Joint (2 Piece)

- Available in Aluminum, Copper, Galvanized Steel, Bonderized, Galvalume®, Stainless Steel or Zinc

Designed to facilitate movement at an inside corner condition.