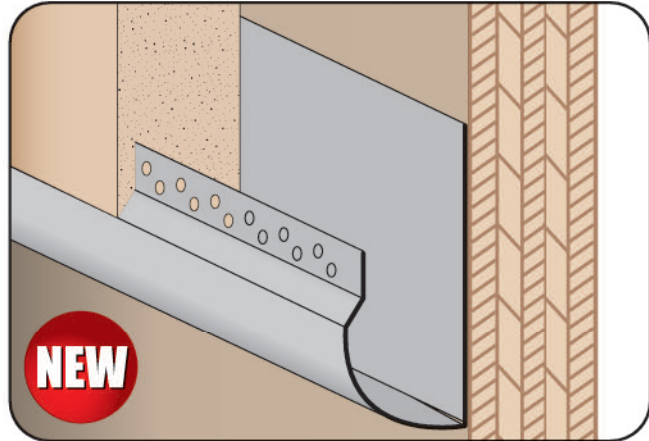


NEW

BFC: Breakaway Form Clip (Angles)

- US Patent 11,035,115

The Breakaway Form Clip is designed to be temperately mounted to the wood form of your concrete pad project to hold the anchor plate squarely in place. Once the concrete is cured, simply remove the fastening nails or screws and lift up the Breakaway Form Clip and it will snap off leaving you with a nice flat anchor plate. With the optional slots you can also use Breakaway Form Clip with protruding anchor bolts.

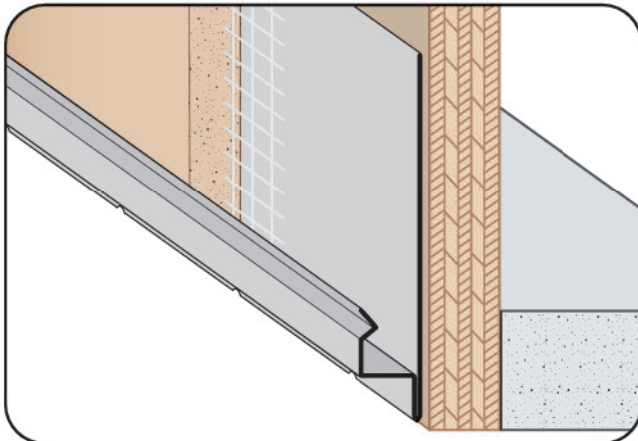


NEW

BJB: Bullnose J Bead

- Available in Aluminum, Copper, Galvanized Steel, Bonderized, Galvalume®, Stainless Steel or Zinc

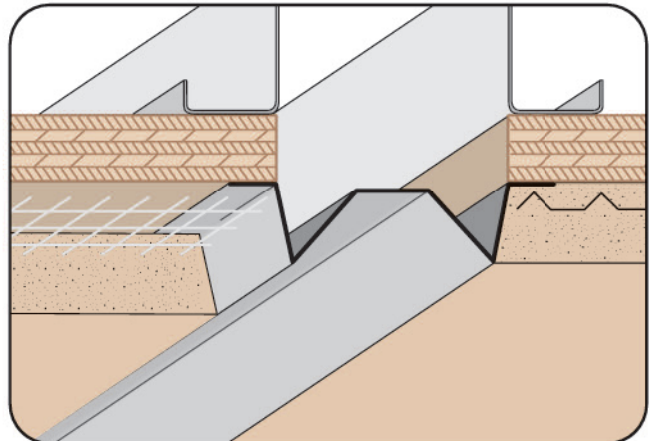
A drywall stop/casing bead in a bullnose shape that provides a decorative casing around windows, doors, and at the base of walls. Keyholes in the tape flange help the drywall mud key to the trim piece.



BSS: #10 Blind Stop

- Available With 1/8" Weep Holes
- Available Curved Upon Request
- Available in Aluminum, Copper, Galvanized Steel, Bonderized, Galvalume®, Stainless Steel or Zinc

A plaster stop that terminates the stucco at the base of walls or at the fascia, or fascia/soffit conditions. Also provides a drip edge and has weep holes.



C-G: Chamfer Groove

- Available in Aluminum, Copper, Galvanized Steel, Bonderized, Galvalume®, Stainless Steel or Zinc

A unique reveal/control joint for plaster.

