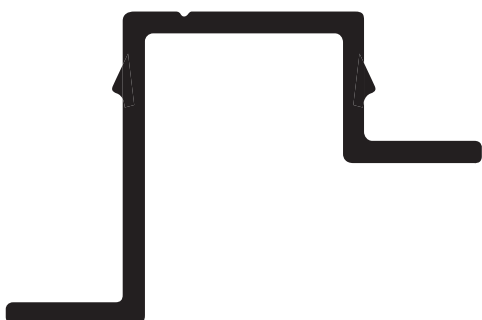
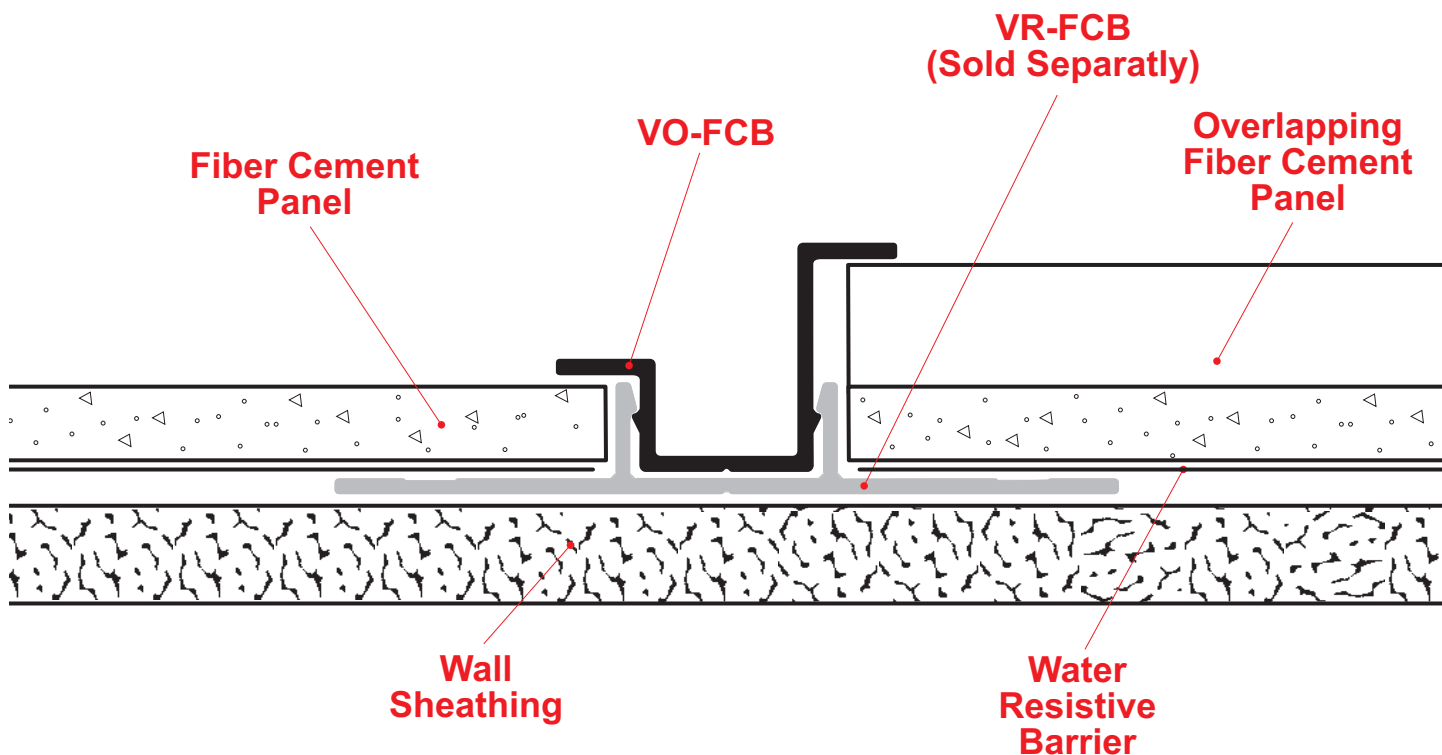




VO-FCP: Vertical Offset Insert for Fiber Cement Panel



The VO-FCP Vertical Offset Insert creates an attractive 1/2" architectural reveal when used in conjunction with the VR-FCP Vertical Retainer (sold separately). This is an excellent molding for the transition from a single layer of fiber cement panels to overlapping siding.

Note: This drawing is supplied solely to assist in the selection and application of product manufactured by Stockton Products. This drawing is generic in nature and should not be used in design or construction without an independent evaluation by a qualified Architect or Engineer of Record.

©2023 Stockton Products. All rights reserved worldwide. Product illustrations are for reference only. Rev 100123
CALIFORNIA RESIDENTS: Please review our Prop 65 statement at stpro.us/P65 or visit www.P65Warnings.ca.gov