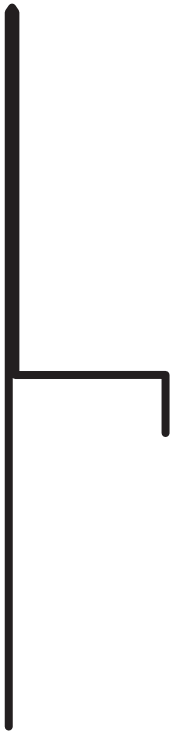
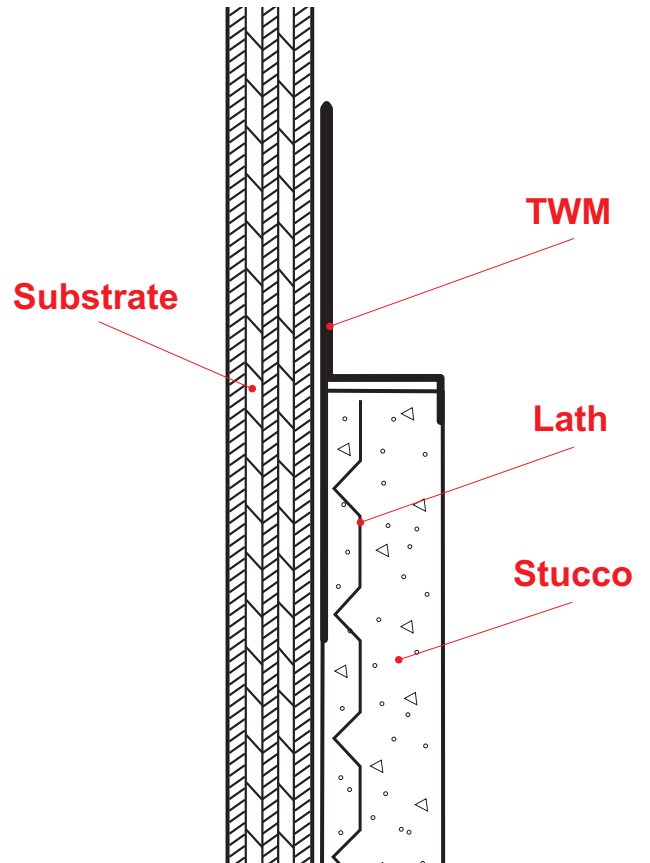


TWM: T Water-Resistant Molding



One-piece SolidGround® design feature mitigates the concern of moisture penetration in a horizontal condition. Provides a plaster stop for top of wall/parapet conditions. SolidGround® design prevents moisture penetration at the top of the wall.

Note: This drawing is supplied solely to assist in the selection and application of product manufactured by Stockton Products. This drawing is generic in nature and should not be used in design or construction without an independent evaluation by a qualified Architect or Engineer of Record.

©2021 Stockton Products. All rights reserved worldwide. Product illustrations are for reference only. Rev 113021
CALIFORNIA RESIDENTS: Please review our Prop 65 statement at stpro.us/P65 or visit www.P65Warnings.ca.gov