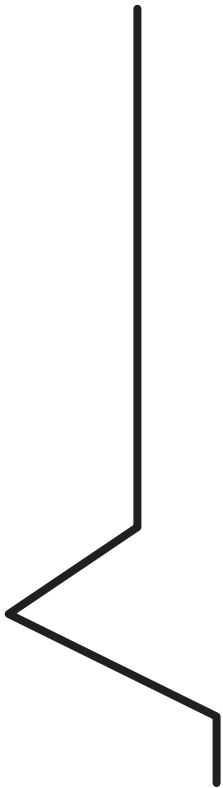
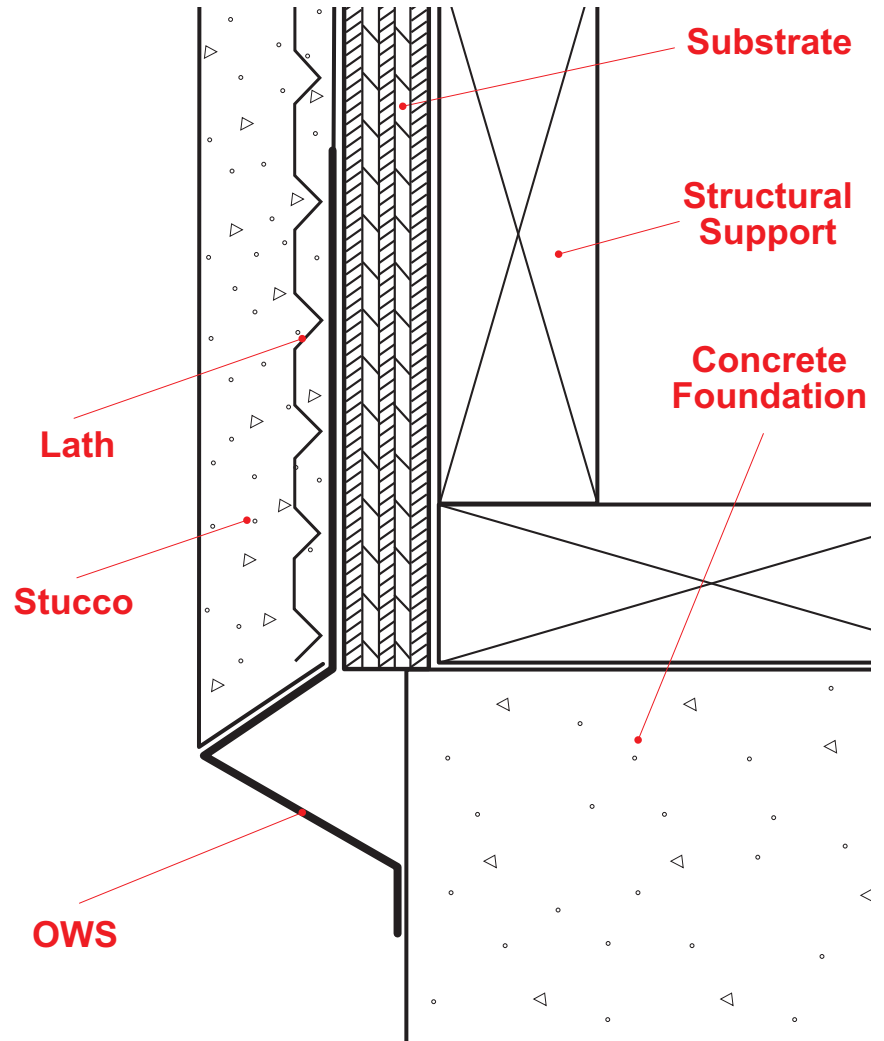


## OWS: Offset Weep Scream



A special weep screed for those conditions where the sheer wall exceeds the foundation in plane. This special design permits the bottom leg of the weep screed to return back to the foundation. Available with dual weep holes to allow full passthrough of moisture.

**Note:** This drawing is supplied solely to assist in the selection and application of product manufactured by Stockton Products. This drawing is generic in nature and should not be used in design or construction without an independent evaluation by a qualified Architect or Engineer of Record.

©2021 Stockton Products. All rights reserved worldwide. Product illustrations are for reference only. Rev 113021  
CALIFORNIA RESIDENTS: Please review our Prop 65 statement at [stpro.us/P65](http://stpro.us/P65) or visit [www.P65Warnings.ca.gov](http://www.P65Warnings.ca.gov)