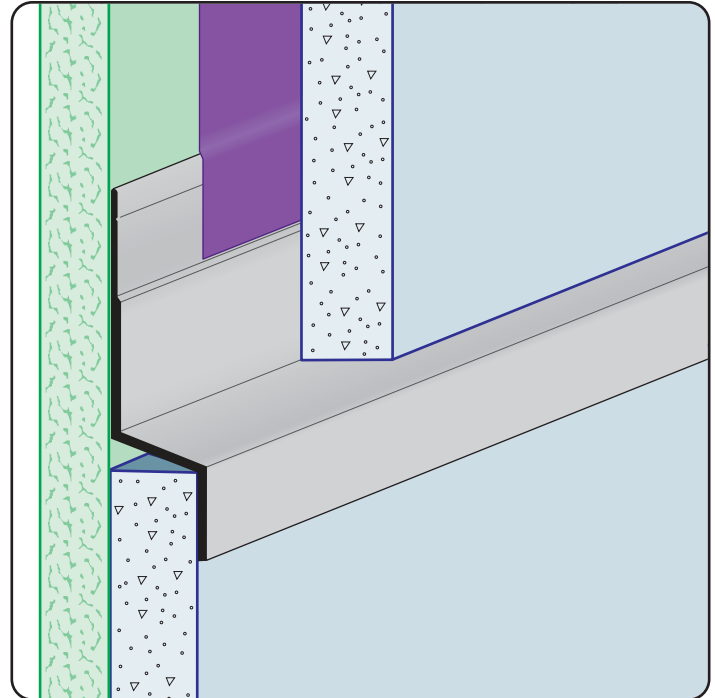


# ZT-FCP: Z Trim for Fiber Cement Panel

- Available in Aluminum Alloy (6063 T-5)
- Formerly known as "WS-FCP: Weep Scribed for Fiber Cement Panel"

A decorative reveal that creates a weep point that allows moisture to weep out and away from the fiber cement panels.

**Note:** Attach panel per manufacturer's recommended installation instructions.



## Most Common Sizes

**Length:** 10'

## Materials And Finishes:

Details: [stpro.us/EXT](http://stpro.us/EXT)

Aluminum Alloy (6063 T-5)

## ASTM Codes:

Details: [stpro.us/ASTM](http://stpro.us/ASTM)

AA-M32-C10A21, AAMA 605.2, C841, C1047, C1063, B136-84, B244-97, D4214-98, ND1730-67-TYPE B

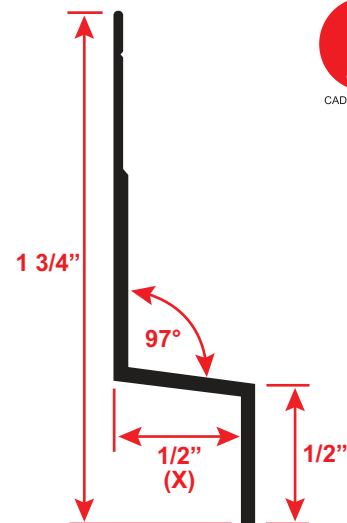
## Most Common Part Numbers:

**WS FCP50 50EC** WS-FCP: X=1/2, Clear Anodize, A, 10'

**WS FCP50 50ECH** WS-FCP: X=1/2, Chem-Film, A, 10'

**WS FCP50 50EP** WS-FCP: X=1/2, Powder Coated, A, 10'

**WS FCP50 50ES** WS-FCP: X=1/2, Stripped Finish, A, 10'



**QUOTE**

Company: \_\_\_\_\_  
Name: \_\_\_\_\_  
Address: \_\_\_\_\_  
City: \_\_\_\_\_  
State/ZIP: \_\_\_\_\_  
Phone: \_\_\_\_\_  
eMail: \_\_\_\_\_

QTY: \_\_\_\_\_  
Material: Aluminum Alloy (6063 T-5)  
Length: \_\_\_\_\_

PO Number: \_\_\_\_\_  
Job/Project: \_\_\_\_\_  
Notes: \_\_\_\_\_  
\_\_\_\_\_  
\_\_\_\_\_  
\_\_\_\_\_

**877-786-2587 • StocktonProducts.com**