



**CUSTOM SIZES AVAILABLE!**

Stockton Custom Fabrication

877-786-2587

custom@StocktonProducts.com

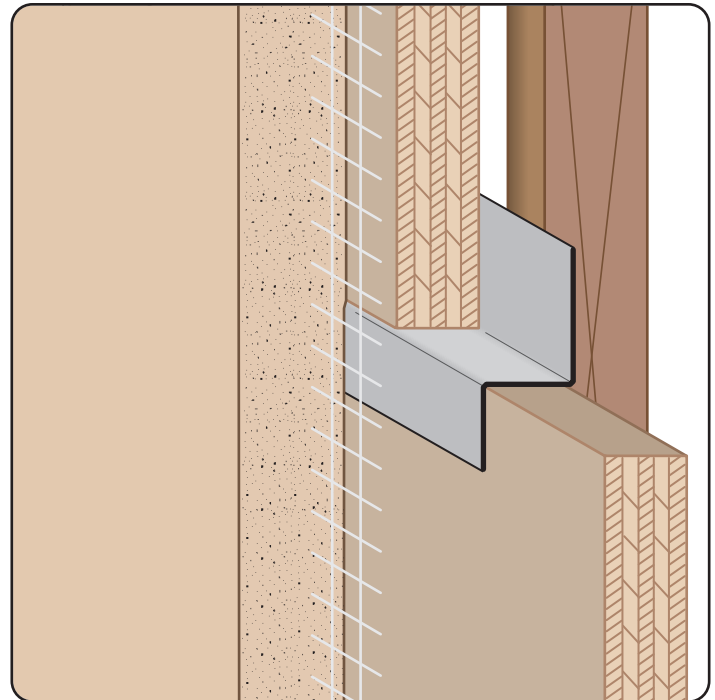


**PRODUCTS™**

## Z-T: Z-Trim

- Custom Sizes Available, Contact Customer Service For Details
- Available Curved Upon Request
- Available in Aluminum (A), Copper (C), Galvanized Steel (GS), Bonderized (BN), Galvalume® (GVM), Stainless Steel (SS) or Zinc (Z)

Used to properly seal and join two pieces of plywood and other conditions where a "Z" shape is required.



### Most Common Sizes

**X Sizes:** 1/4", 1/2", 1", 1 1/2" or 2"

**Y Sizes:** 1/2", 5/8", 3/4", 1" or 2"

**Z Sizes:** 3/4", 1", 1 1/2" or 2"

**Length:** 120"

### Materials And Finishes:

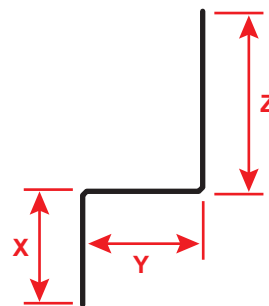
Details: [stpro.us/MET](http://stpro.us/MET)

Aluminum (A), Copper (C), Galvanized Steel (GS), Bonderized (BN), Galvalume® (GVM), Stainless Steel (SS) or Zinc (Z)

### ASTM Codes:

Details: [stpro.us/ASTM](http://stpro.us/ASTM)

A1003, A653, A924, C645, C754, C955



### Most Common Part Numbers:

**Z T100W078 100AC** Z-Trim: X=1, 1/8 Weep, Y=7/8, Z=1, Clear Anodize, A, 10'

**Z T112 100 112GA20** Z-Trim: X=1 1/2, Y=1, Z=1 1/2, GS 20ga, 10'

**Z T300 012 200** Z-Trim: X=3, Y=1/2, Z=2, GS, 10'

**Z T200200300GA16144IN** Z-Trim: X=2, Y=2, Z=3, A, 16ga GS, 12'

**QUOTE**

Company: \_\_\_\_\_  
 Name: \_\_\_\_\_  
 Address: \_\_\_\_\_  
 City: \_\_\_\_\_  
 State/ZIP: \_\_\_\_\_  
 Phone: \_\_\_\_\_  
 eMail: \_\_\_\_\_

QTY: \_\_\_\_\_  
 Material/Gauge: \_\_\_\_\_  
 X Size: \_\_\_\_\_  
 Y Size: \_\_\_\_\_  
 Z Size: \_\_\_\_\_  
 Length: \_\_\_\_\_

PO Number: \_\_\_\_\_  
 Job/Project: \_\_\_\_\_  
 Notes: \_\_\_\_\_  
 \_\_\_\_\_  
 \_\_\_\_\_

**877-786-2587 • StocktonProducts.com**

