



CUSTOM SIZES AVAILABLE!

Stockton Custom Fabrication

877-786-2587

custom@StocktonProducts.com



PRODUCTS™

XLF: XL Foundation Screed

- Custom Sizes Available, Contact Customer Service For Details
- *Water Tested per ASTM E1105*
- SUPERIOR® Moisture Protection
- Available Curved Upon Request
- Available in Aluminum (A), Copper (C), Galvanized Steel (GS), Bonderized (BN), Galvalume® (GVM), Stainless Steel (SS) or Zinc (Z)

Stucco installation guidelines require stucco to be held up off of hardscape. Provides an extended back leg to protect waterproof membranes.

US Patent 7,673,421

Note: Weep holes are available in some configurations. Please call customer service for details.

Most Common Sizes

X Sizes: 1/2", 5/8", 3/4", 7/8", 1" or 1 3/8"

Y Sizes: 3 1/2", 4", 4 1/2" or 5"

Z Sizes: 2 1/2", 3", 3 1/2" or 4"

Length: 120"

Materials And Finishes:

Details: stpro.us/MET

Aluminum (A), Copper (C), Galvanized Steel (GS), Bonderized (BN), Galvalume® (GVM), Stainless Steel (SS) or Zinc (Z)

ASTM Codes:

Details: stpro.us/ASTM

All Accessories are fabricated from prime galvanized steel G90 zinc coating by the hot dipped method, conforming to steel and coating specification ASTM A-653/A-653M or zinc alloy meeting ASTM B-69. Stainless Steel A480/A480M A580M (Stainless Steel) For installation and placement instructions refer to ASTM C1063, C841 and C926.

Most Common Part Numbers:

XLF034 312 400 XLF: X=3/4, Y=3 1/2, Z=4, GS, 10'

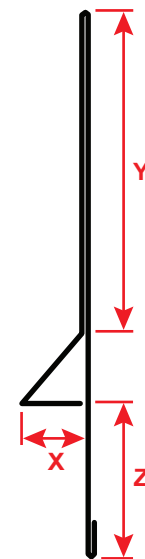
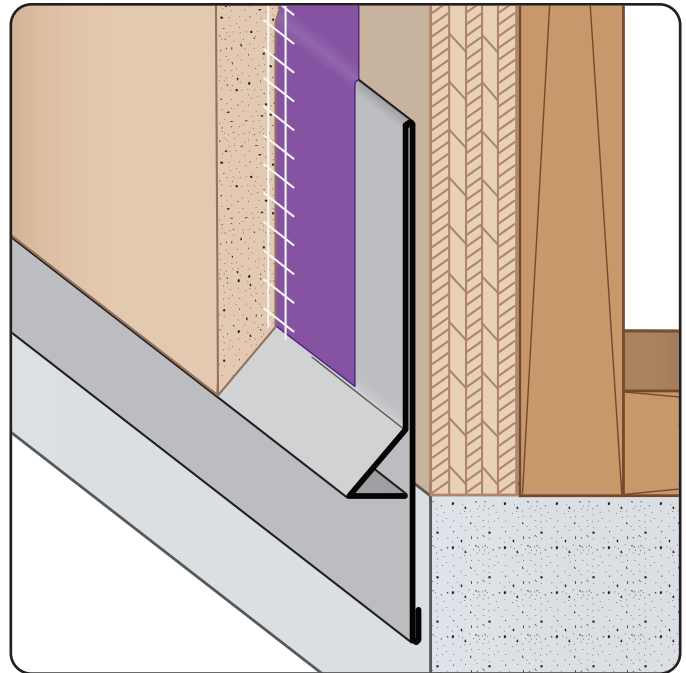
XLF034 400 312 XLF: X=3/4, Y=4, Z=3 1/2, GS, 10'

XLF078 312 212 XLF: X=7/8, Y=3 1/2, Z=2 1/2, GS, 10'

XLF078 312 400 XLF: X=7/8, Y=3 1/2, Z=4, GS, 10'

XLF078 318 212 XLF: X=7/8, Y=3 1/8, Z=2 1/2, GS, 10'

XLF078W312 200L XLF: X=7/8, 1/2 Weep Holes, Y=3 1/2, Z=2, GS, 10'



SUPERIOR
Moisture
Protection

QUOTE	Company: _____	QTY: _____	PO Number: _____
	Name: _____	Material/Gauge: _____	Job/Project: _____
	Address: _____	X Size: _____	Notes: _____
	City: _____	Y Size: _____	_____
	State/ZIP: _____	Z Size: _____	_____
	Phone: _____	Length: _____	_____
	eMail: _____		_____

877-786-2587 • StocktonProducts.com

