



CUSTOM SIZES AVAILABLE!

Stockton Custom Fabrication
877-786-2587
custom@StocktonProducts.com



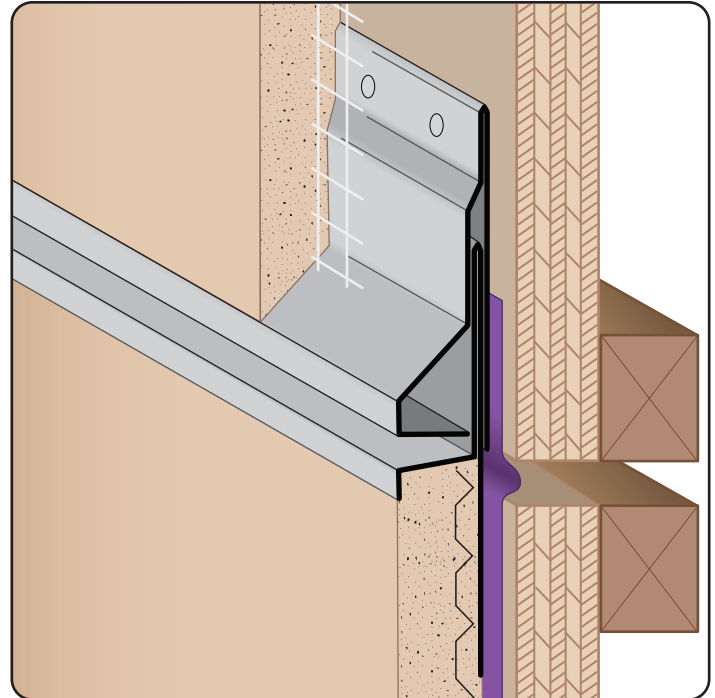
PRODUCTS™

WXJ: Water Management Expansion Joint - 2 Piece

- Custom Sizes Available, Contact Customer Service For Details
- SUPERIOR® Moisture Protection
- Available With 1/4" Weep Holes or No Weep Holes
- Available in Aluminum (A), Copper (C), Galvanized Steel (GS), Bonderized (BN), Galvalume® (GVM), Stainless Steel (SS) or Zinc (Z)

Similar to the M-Slide Expansion Joint® design, the WXJ is a two piece expansion joint that provides Superior Moisture Protection™ while offering movement at floor lines and other conditions requiring an expansion joint. Unique design provides a uniform look to the plaster return keys on both top and bottom legs when finished. Provides 1" of vertical movement.

US Patent D850656



Most Common Sizes

X Sizes: 5/8", 3/4", 7/8", 1", 1 3/8" or 1 1/2"

Y Sizes: 2 1/2" or 3"

Z Sizes: 2 1/2" or 3"

Length: 120"

Materials And Finishes:

Details: stpro.us/MET

Aluminum (A), Copper (C), Galvanized Steel (GS), Bonderized (BN), Galvalume® (GVM), Stainless Steel (SS) or Zinc (Z)

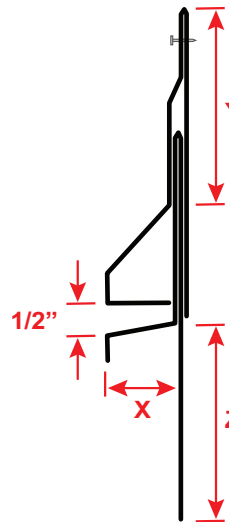
ASTM Codes:

Details: stpro.us/ASTM

All Accessories are fabricated from prime galvanized steel G90 zinc coating by the hot dipped method, conforming to steel and coating specification ASTM A-653/A-653M or zinc alloy meeting ASTM B-69. Stainless Steel A480/A480M A580M (Stainless Steel) For installation and placement instructions refer to ASTM C1063, C841 and C926.

Most Common Part Numbers:

WXJ078 300 300 WXJ: X=7/8, Y=3, Z=3, GS, 10'



SUPERIOR®
Moisture
Protection

QUOTE	Company: _____	QTY: _____	PO Number: _____
	Name: _____	Material/Gauge: _____	Job/Project: _____
	Address: _____	X Size: _____	Notes: _____
	City: _____	Y Size: _____	_____
	State/ZIP: _____	Z Size: _____	_____
	Phone: _____	Length: _____	_____
	eMail: _____	Weep Holes: <input type="checkbox"/> None <input type="checkbox"/> 1/4"	_____

877-786-2587 • StocktonProducts.com

