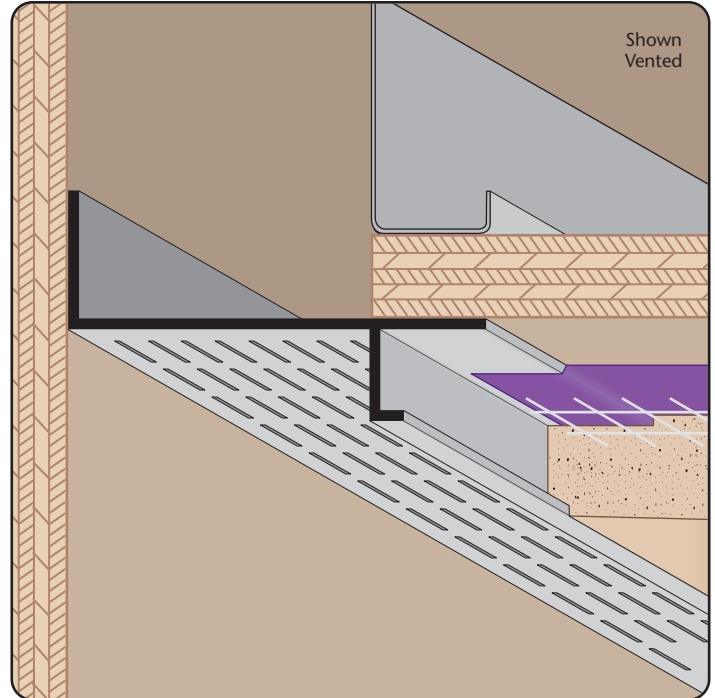


WPM: Plaster Soffit Reveal Molding

- With 1/8" x 1" Vent Slots
- Available Curved Upon Request
- Available in Aluminum Alloy (6063 T-5)

A screed that provides a plaster stop and creates a reveal at ceiling/wall conditions. Vented to provide free air flow at the perimeter.



Most Common Sizes
Y Sizes: 2", 3" or 4"
Length: 10'

Materials And Finishes:

Details: stpro.us/EXT

Aluminum Alloy (6063 T-5)

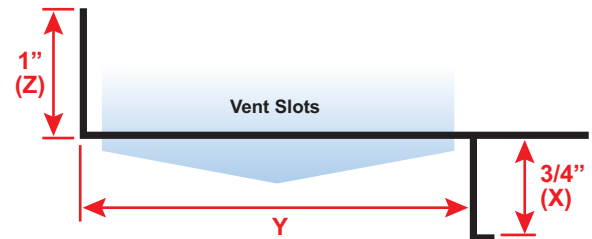
ASTM Codes:

Details: stpro.us/ASTM

AA-M32-C10A21, AAMA 605.2, C841, C1047, C1063, B136-84, B244-97, D4214-98, ND1730-67-TYPE B

Most Common Part Numbers:

WPM625V200EC	WPM: X=5/8, Vent, Y=2, Z=1, Clear Anod, AL, 10'
WPM75V300EC	WPM: X=3/4, Vent, Y=3, Z=1, Clear Anod, AL, 10'
WPM75 300EC	WPM: X=3/4, Y=3, Z=1, Clear Anod, A, 10'
WPM75V400EC	WPM: X=3/4, Vent, Y=4, Z=1, Clear Anod, AL, 10'



QUOTE	Company: _____	QTY: _____	PO Number: _____
	Name: _____	Material: Aluminum Alloy (6063 T-5)	Job/Project: _____
	Address: _____	Y Size: _____	Notes: _____
	City: _____	Length: _____	_____
	State/ZIP: _____		_____
	Phone: _____		_____
	eMail: _____		_____

877-786-2587 • StocktonProducts.com

